



670 Tallagalla Drive, BAUPLE, QLD 4650

EXPANSIVE 45 ACRES OF OPPORTUNITY - CREATE YOUR IDEAL RURAL ESCAPE

Set on an expansive 45-acre parcel, this property presents a rare and exciting opportunity for buyers seeking space, privacy, and the chance to create something truly special. Whether you're looking to renovate the existing residence, rebuild your dream rural retreat, or secure a large landholding as an investment for the future, the possibilities here are extensive.

The home features an open plan kitchen and living area, two bedrooms plus a sleepout for added flexibility, and two bathrooms, one upstairs and one underneath, offering practical everyday living and convenience for entertaining.

Outside, the property includes a swimming pool for the warmer months, a large open area under the house suited to entertaining, parking or extra use, and a substantial four-bay shed with an attached awning, ideal for storage, machinery or workspace.

The land itself is a standout feature. Spanning approximately 45 acres, it provides a mix of usable space and natural surroundings, offering endless potential for agricultural pursuits or simply enjoying the peace and quiet of a rural lifestyle. A bore supplying drinkable water ensures a reliable water source, while a large dam further enhances the property's practicality and appeal.

The particulars contained herein are supplied for information only and shall not be taken as a representation in any respect on the part of the vendor or its agent. Interested parties should contact the nominated person or office for full and current details.

TYPE: For Sale

INTERNET ID: 72P16940

SALE DETAILS

\$720,000

CONTACT DETAILS

Curra Country
Shop 1 Birdwood Drive
Gunalda, QLD
07 5484 6755

Tim Broadbent
0436 005 293

Properties of this size and potential are becoming increasingly difficult to secure, particularly in such a peaceful and private setting. This is your chance to create a rural escape tailored to your needs, away from the hustle and bustle, yet still within reach of key regional centres.

Conveniently located, the property is approximately 15 minutes to Tiaro, 40 minutes to Maryborough, and 50 minutes to Gympie. For coastal adventures, Rainbow Beach is just over an hour away, while the state capital, Brisbane, can be reached in approximately 2.5 hours.

If you've been searching for a private rural getaway with room to grow and the potential to add significant value, this property deserves your attention.

Disclaimer: The home has previously experienced termite damage. Treatment has been completed; however, the property is being sold as is and will require renovation and ongoing improvement.

For all enquiries, please contact Tim (0436 005 293) or Stella (0481 793 300)

N.B. Please do not enter any property without an agent present. All inspections by appointment only. Please phone or email Agent to arrange a viewing time.

DISCLAIMER:

" Whilst all due diligence has been taken in collecting and passing on the vendor supplied information, we do not accept responsibility for its accuracy and recommend intending purchasers/interested parties conduct and rely upon their own enquiries ".

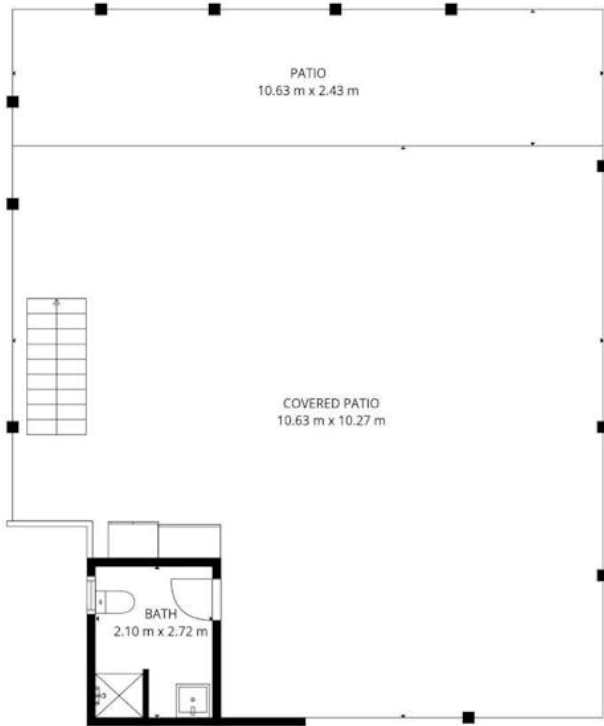
Other features: Bush Retreat, High Clearance

- Land Area 45 acres
- Bedrooms: 2
- Bathrooms: 1
- 4 car garage
- Floorboards

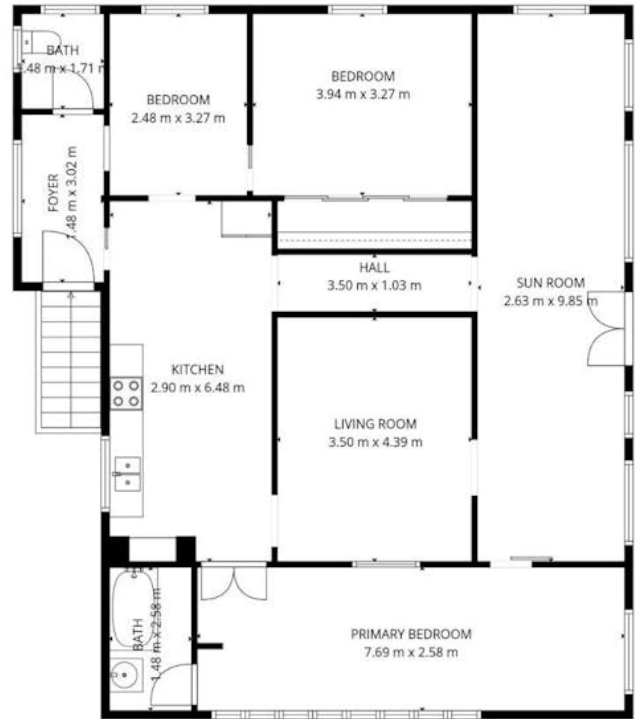








Basement



1st floor

TOTAL: 132 m²
 Basement: 6 m², 1st floor: 126 m²
 EXCLUDED AREAS: COVERED PATIO: 98 m², PATIO: 26 m², WALLS: 9 m²

FLOOR PLAN CREATED BY CUBICASA APP. MEASUREMENTS DEEMED HIGHLY RELIABLE BUT NOT GUARANTEED.



Curra Country