

1/6 Newman Drive, EMERALD, QLD 4720

Stylish. Spacious. Smart!

This low-maintenance townhouse delivering comfort, practicality and modern living in one of Emerald's most convenient pockets.

- Modern layout with open-plan living and dining
- Stylish kitchen with ample bench space, storage and easy-care finishes
- Three generously sized bedrooms for comfortable family living
- Master bedroom includes private ensuite
- Double lock-up garage - secure parking plus storage

- This property is: Unfurnished
- Pets: No
- Available on: 30/01/26
- Bedrooms: 3
- Bathrooms: 2
- Double garage

TYPE: For Rent

INTERNET ID: 73P2311

RENTAL DETAILS

Rent / Lease:

570/wk

CONTACT DETAILS

**Elders Real Estate
Emerald**

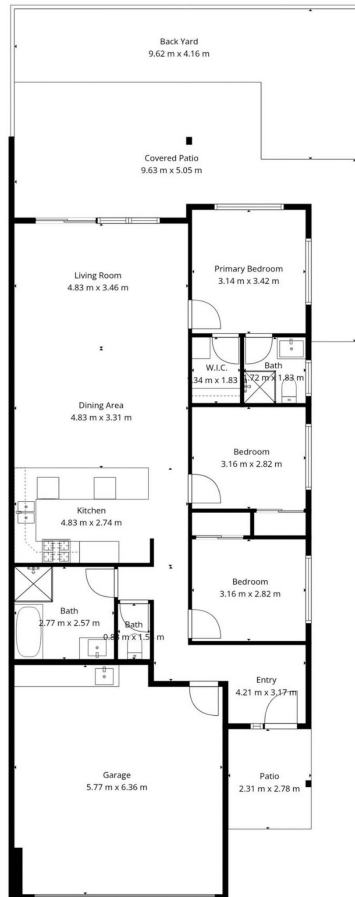
Shop 2/97 Egerton Street
EMERALD, QLD
(07) 4987 7779

Jade Rossberg
0498 877 797









2/6 Newman Dr, Emerald

THIS FLOOR PLAN IS FOR ILLUSTRATIVE PURPOSES ONLY. ALL MEASUREMENTS AND LAYOUTS ARE APPROXIMATE AND MAY NOT BE TO SCALE.

3
2
2

