

## 15 Lillypilly Drive, RIPLEY, QLD 4306

### Welcome Home

Built in 2015 and set on 375m<sup>2</sup>, this beautifully presented low-set home is positioned on a quiet street, offers a low-maintenance lifestyle and an abundance of space allowing your family to move in and feel right at home.

In the heart of the home, the modern galley-style kitchen will be a pleasure to cook in and features gas cook-top, dishwasher, ample cabinetry, enormous walk-in pantry and adjoins the light-filled air conditioned open-plan living and dining. This property has been designed with entertaining in mind with seamless flow from the indoor living to the outdoor covered alfresco - generous in size, it's the perfect spot for family get-togethers or simply unwind whilst watching the kids play in the fully fenced yard.

All four generously sized bedrooms include ceiling fans, security screens and are serviced by a full-sized bathroom and separate toilet whilst the master retreat features reverse cycle air conditioning, walk-in wardrobe and spacious ensuite. The bonus second living area/media room ensures there's plenty of room for the entire family, children's playroom or teenage retreat - not to mention the purpose built study nook for those that work from home.

Take a closer look at the fantastic features on offer:

The particulars contained herein are supplied for information only and shall not be taken as a representation in any respect on the part of the vendor or its agent. Interested parties should contact the nominated person or office for full and current details.

**TYPE:** For Sale

**INTERNET ID:** 76P2393

**SALE DETAILS**

**Offers over \$890,000**

**CONTACT DETAILS**

**Paddington**

50/283 Given Terrace  
Paddington, QLD  
07 3876 3744

**Anna Dos Santos**

- Repainted inside the property
- 4 bedrooms (include ceiling fans, security screen windows and built-in wardrobes)
- Master bedroom features air conditioning, walk-in wardrobe and spacious ensuite
- Main bathroom includes bathtub and the convenience of a separate toilet
- Modern galley-style kitchen with ample cabinetry, gas cook-top, dishwasher and massive walk-in pantry
- Spacious air conditioned living and dining
- Bonus 2nd living space/media room
- Covered alfresco area
- Fully fenced yard with plenty of room for the kids to enjoy outdoor play
- Great sized internal laundry with external access
- Security screen windows and doors
- Remote double garage with internal access
- Offering low-maintenance living

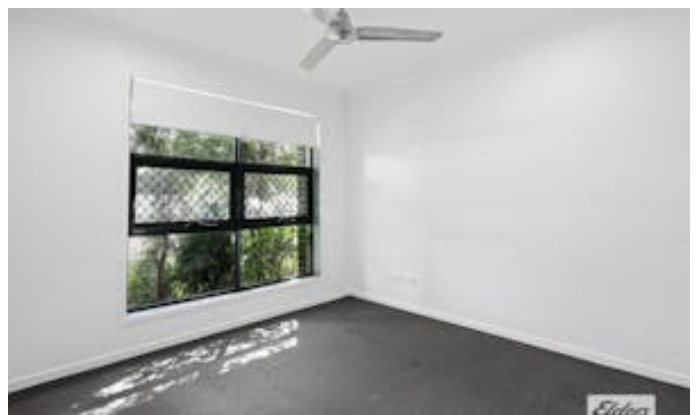
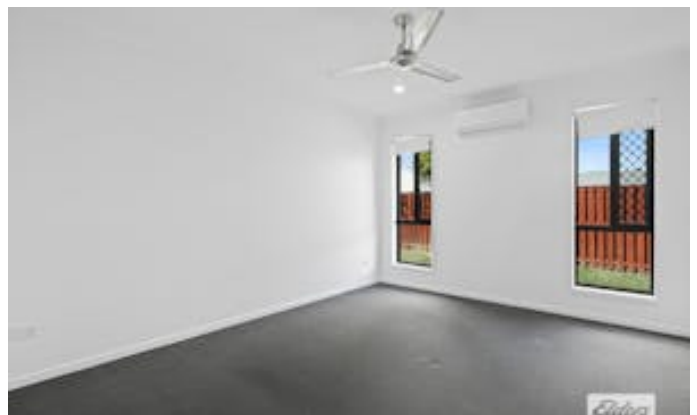
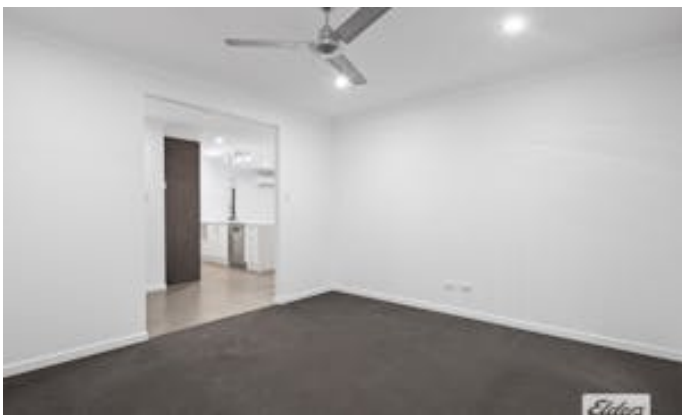
What makes this property even more desirable? It's convenient location:

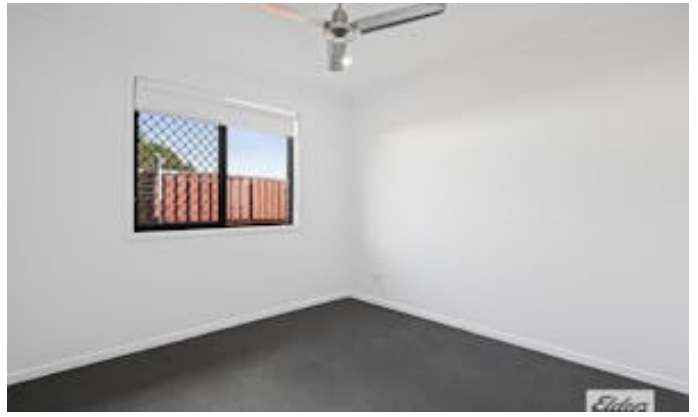
- Only a 6 minute walk to the nearest Childcare Centre & 3 minute walk to nearest Park
- Just 4 minutes' drive to Ripley Town Centre
- Easy commute to Brisbane via motorways being only a 45 minutes' drive approximately
- Within the catchment for Ripley Central Primary, Ripley Valley Secondary College & Bremer State High

You will feel at ease with room to move in this spacious and modern property which is sure to impress both owner occupiers and investors alike. If you're an investor, rental appraisal available upon request.

Other features: Close to Schools, Close to Shops

- Land Area 375.00 square metres
- Bedrooms: 4
- Bathrooms: 2
- Double garage





# 15 Lillypilly Drive, Ripley



Please note: All stated dimensions are approximate only. Particulars given are for general information only and do not constitute any representation on the part of the vendor or agent.

