



## 10 Salway Close, BEGA, NSW 2550

### NEAR NEW HOME

Take all the hassle and time out of building a new home by buying this well designed near new home.

This near new home is in a quiet cul de sac street and is the perfect family home. With two separate living areas and a great deck that opens off the kitchen this is the quintessential modern family home.

Modern families value their space and the floor plan of this home with master bedroom and en-suite at the front of the home; and the three other bedrooms towards the back; with the main living and kitchen/dining space in between is the perfect mix of space, connectivity and privacy.

The block is 794m2 and the flow from the kitchen to the large deck to the backyard is well thought out and promotes excellent entertaining opportunities.

Currently rented at \$550 per week this home will be available from mid August for an owner occupier.

**TYPE:** Sold

**INTERNET ID:** 78P0764

### SALE DETAILS

**\$895,000**

### CONTACT DETAILS

**Elders Real Estate Bega**  
Shop 3/248 Carp Street  
Bega, NSW  
02 6492 1799

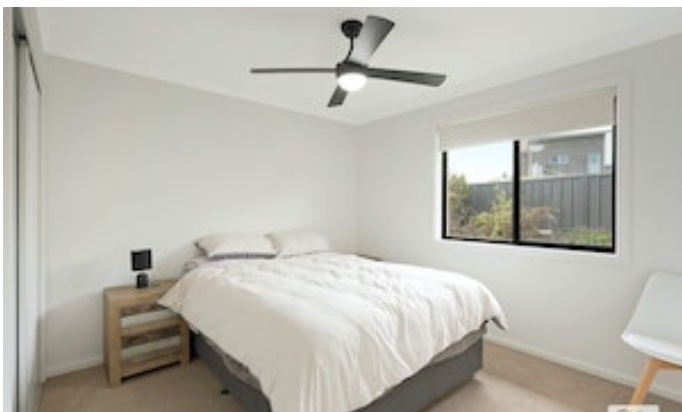
**Rod McDonald**  
0410 529 517

Call today to arrange an inspection.

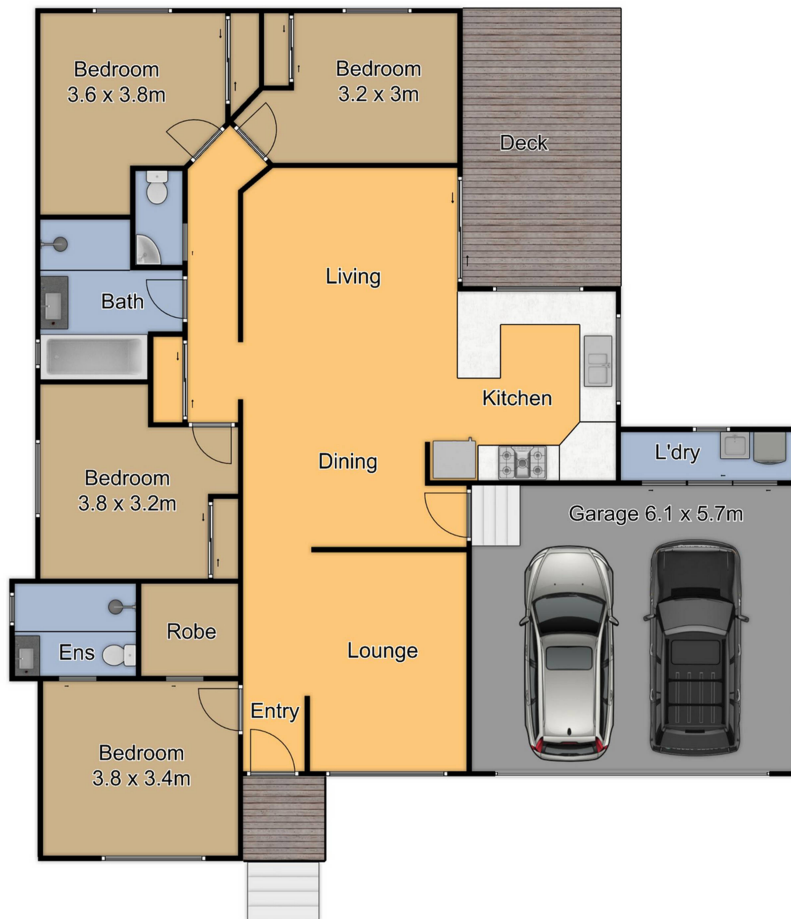
- Land Area 794.00 square metres
- Bedrooms: 4
- Bathrooms: 2
- Double garage
- Ensuite











## 10 Salway Close Bega



Plan is not to scale.  
Measurements are approximate and  
should be used as a guide only.