



1281 Princes Highway, FROGS HOLLOW, NSW 2550

Outstanding Rural Property in a Sought-After Location

1281 Princes Highway FROGS HOLLOW via BEGA

35.21 Ha (86.96 acres)

Ideally located midway between Bega and Merimbula, this exceptional property combines space, privacy and quality infrastructure in one of the Far South Coast's most sought-after rural pockets.

The full brick residence offers 4 bedrooms, 3 bathrooms and 3 spacious living areas, delivering comfort and functionality for family living. The home is powered by a 3kVA standalone solar system, ensuring off-grid, sustainable living.

The land is well set up for a variety of rural pursuits, featuring 9 fenced paddocks plus 7 horse day paddocks, a 60m x 40m Olympic-sized sand arena, a 4-bay machinery shed, and two additional large storage/machinery sheds.

A truly stunning lifestyle property with excellent improvements, offering endless options and opportunities-whether you're looking to run stock, pursue equine interests, or

The particulars contained herein are supplied for information only and shall not be taken as a representation in any respect on the part of the vendor or its agent. Interested parties should contact the nominated person or office for full and current details.

TYPE: For Sale

INTERNET ID: 78P1249

SALE DETAILS

\$1,999,000

CONTACT DETAILS

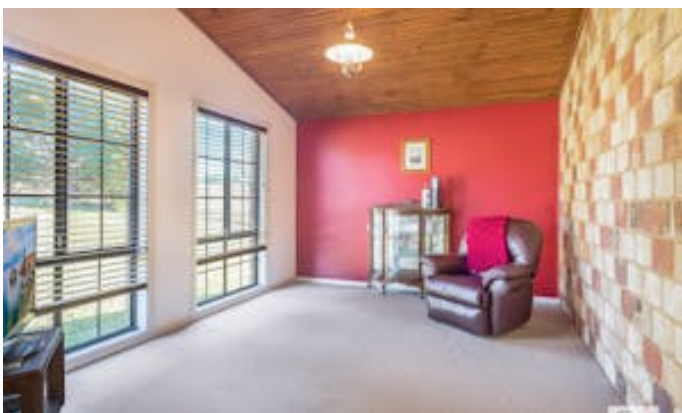
Elders Real Estate Bega

Shop 3/248 Carp Street
Bega, NSW
02 6492 1799

David Armstrong
0412 623 140

simply enjoy the space and serenity of rural life.

- Land Area 35.21 hectares
- Bedrooms: 4
- Bathrooms: 3











1281 Princes Highway
FROGS HOLLOW

TOTAL: 252 m²
FLOOR 1: 252 m²
EXCLUDED AREAS: COVERED PATIO: 34 m², PATIO: 33 m², VERANDAH: 24 m²

Measurements Are Approximate And Should Be Used As a Guide Only.

