

9 Watson Street, BEGA, NSW 2550

Classic Double Brick Home in the Heart of Bega

Brilliantly located just moments from the CBD and local schools, this charming double brick home offers character, space and convenience. Featuring three bedrooms and a well-kept bathroom, the home has a generous open-plan lounge and dining area, highlighted by high ornate ceilings that reflect its classic heritage.

Set on a 680m² block, the property is surrounded by immaculate gardens and enjoys a prized north-easterly aspect with sweeping views across the distant mountain ranges. Storage under the home and rear lane access add to the practicality, while the large open common area at the back of the block provides further space and flexibility.

A rare opportunity to secure a solid, character-filled home in a prime location.

- Land Area 680.00 square metres
- Bedrooms: 3
- Bathrooms: 1
- Car Parks: 1

TYPE: For Sale

INTERNET ID: 78P1269

SALE DETAILS

\$695,000

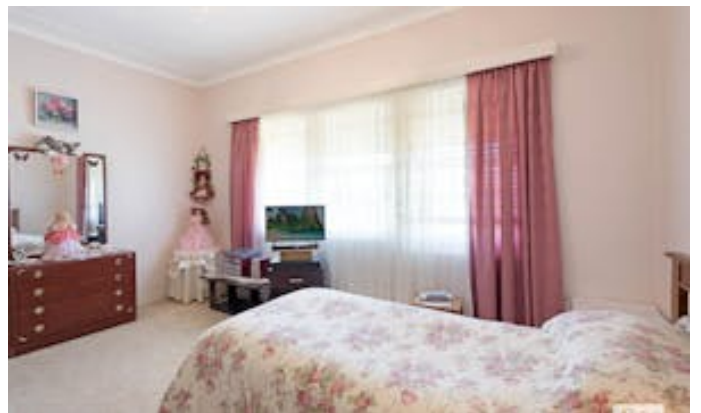
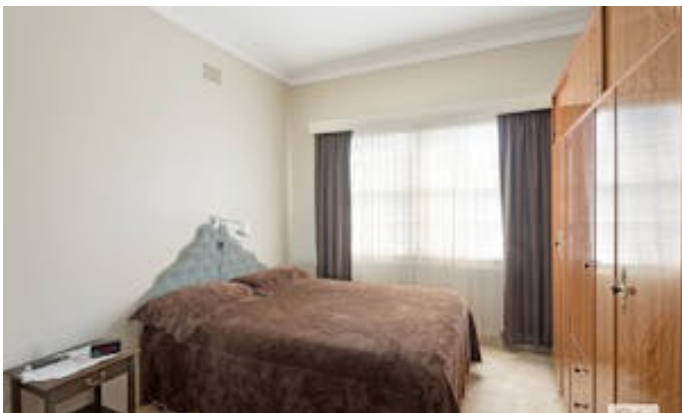
CONTACT DETAILS

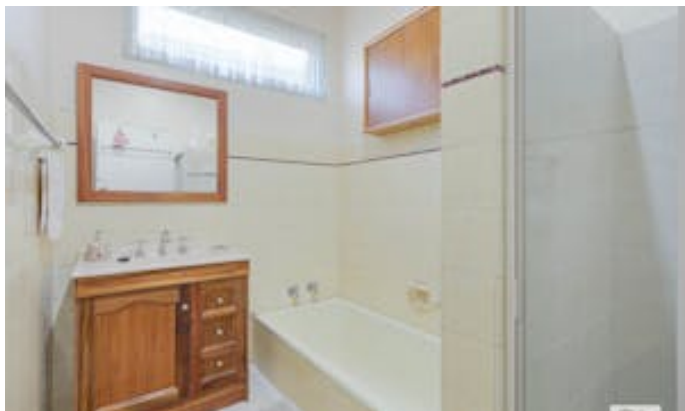
Elders Real Estate Bega

Shop 3/248 Carp Street
Bega, NSW
02 6492 1799

Rodney McDonald

0410 529 517









9 Watson Street BEGA

TOTAL: 125 m²
 FLOOR 1: 125 m²
 EXCLUDED AREAS: PORCH: 21 m², RAMP: 5 m²,
 GARAGE/STORAGE: 36 m²
 Measurements Are Approximate And Should Be Used As a Guide Only.

