



## 4 Wallace Street, BEGA, NSW 2550

### Garden Haven Home in Bega

Looking for a family home within walking distance of town, where you can enjoy peaceful gardens and a home full of character? Welcome to 4 Wallace Street, Bega.

This 3-bedroom, 626â€²sqm property is full of charm and practical features. You are greeted by a beautifully landscaped garden and a single garage underneath, with potential space for a workshop. A recently renovated staircase leads to a small balcony, perfect for a morning coffee.

Inside, the grand living room features exposed timber framing and abundant natural light, ideal for entertaining, with air conditioning for comfort. The living area connects directly to the master bedroom, which includes built-in wardrobes with additional storage above, and continues the exposed timber details.

The well-appointed kitchen offers an induction cooktop, electric oven, ample storage, and a window with a view of the backyard. A wood fire heater in the kitchen/dining area adds warmth and atmosphere. Two additional bedrooms sit just off the kitchen, with one currently set up as a home office and the other with built-ins. The main bathroom features a shower and bath, with a separate toilet in the laundry.

**TYPE:** For Sale

**INTERNET ID:** 78P1306

#### SALE DETAILS

**\$699,000**

#### CONTACT DETAILS

**Elders Real Estate Bega**  
Shop 3/248 Carp Street  
Bega, NSW  
02 6492 1799

**Matthew Hughes**  
0413 819 752

Step outside to your private garden haven, ideal for children to play, entertaining friends and family, or simply enjoying the serenity of being in the heart of Bega. The garden features shade awnings, a pebble seating area, and a wood-fired dome for cozy winter evenings. Surrounded by Australian native plants, with a small garden bed along the fence, this space is perfect for families and pets.

The home features solar panels with batteries for electricity and hot water and is within walking distance of schools, Bega Village, and the main street.

If you're looking for a home with character, convenience, and a peaceful garden retreat, this is the one for you. Call Matthew today to inspect this charming garden haven property.

Other features: Close to Schools, Close to Shops

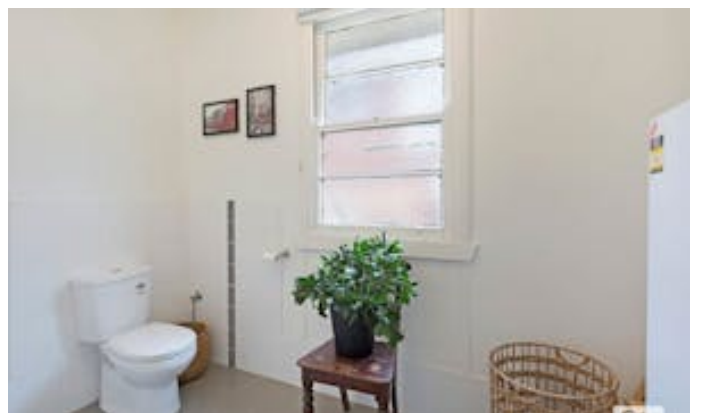
- Land Area 626.00 square metres
- Bedrooms: 3
- Bathrooms: 1
- Car Parks: 1
- Single garage





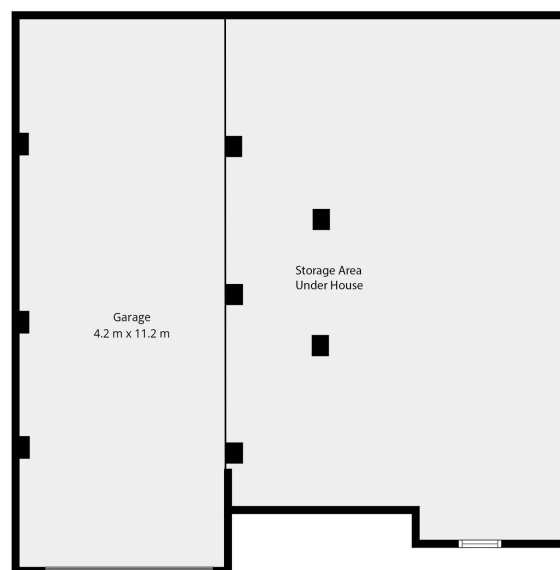












## 4 Wallace Street BEGA

**TOTAL: 108 m<sup>2</sup>**

EXCLUDED AREAS: GARAGE: 47 m<sup>2</sup>, PORCH: 10 m<sup>2</sup>, COVERED DECK: 22 m<sup>2</sup>,  
DECK: 18 m<sup>2</sup>, WALLS: 12 m<sup>2</sup>

Measurements Are Approximate And Should Be Used As a Guide Only.

