



## 613 New Buildings Road, WYNDHAM, NSW 2550

### Lifestyle, Space & Self-Sufficiency on 222 Acres

Set on an expansive 222 acres, 613 New Buildings Road, Wyndham offers the perfect blend of productive land, natural bushland, and modern country living. Whether you're chasing a tree change, a hobby farm, or a self-sufficient lifestyle, this property delivers it all.

The beautifully renovated two-bedroom home showcases a stylish, contemporary feel while maintaining a warm country charm. At the heart of the home is a stunning new kitchen designed with the entertainer in mind, featuring wide benchtops, a walk-in pantry, and seamless flow through to the dining area and out to the covered outdoor entertaining space.

A separate lounge provides flexibility and could easily be converted into a third bedroom if required. The master suite is a true retreat, complete with cleverly designed walk-in robes hidden behind a bedhead wall and private ensuite access featuring a walk-in shower, his and hers vanity, and separate toilet.

Enjoy the comfort of modern living in a peaceful rural setting, with a fantastic undercover outdoor area ideal for entertaining year-round.

**TYPE:** For Sale

**INTERNET ID:** 78P1332

**SALE DETAILS**

**\$1,095,000**

**CONTACT DETAILS**

**Elders Real Estate Bega**

Shop 3/248 Carp Street

Bega, NSW

02 6492 1799

**Rodney McDonald**

0410 529 517

The land is a mix of well-fenced pasture and native bush, currently supporting goats and a small herd of cattle. With established veggie gardens and fruit trees already in place, the property is perfectly set up for those seeking a more self-sufficient lifestyle. Water security is assured with a reliable bore, along with rainwater collection from both the home and shedding.

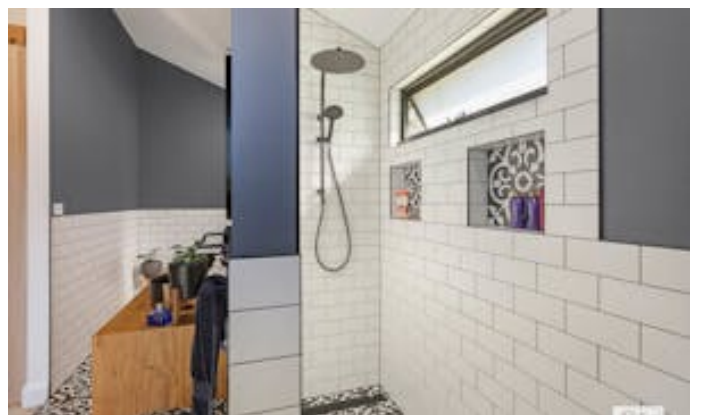
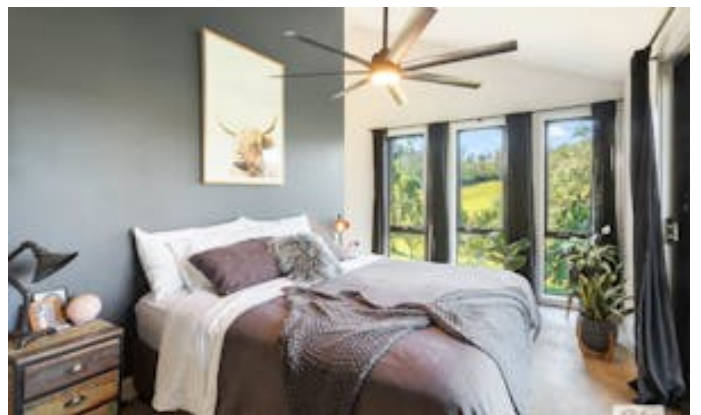
Infrastructure is well catered for, with a large shed ideal for tractors and farm machinery, plus an additional smaller shed for storage.

Conveniently located just 5 minutes from Wyndham village, offering a primary school and general store, and approximately 30 minutes to Pambula's caf  s, restaurants, and beautiful beaches-this is rural living without compromise.

A rare opportunity to secure a lifestyle property where modern comfort meets country freedom.

- Land Area 90.2 hectares
- Bedrooms: 2
- Bathrooms: 2
- 6 car garage











**Total: 120 m<sup>2</sup>**

Excluded Areas: Covered Deck: 34 m<sup>2</sup>

Measurements Are Approximate And Should Be Used As a Guide Only.

613 New Buildings Road  
WYNDHAM

