



26 Virginia Turn, MADORA BAY, WA 6210

CLOSE TO THE BEACH

Situated on a 416sqm Cottage block is this brick and colourbond home in Madora Bay.

Comprising 4 bedrooms all with Built-in Robes. The master suite is a generous size with en-suite bathroom. The 2nd bathroom is a good size with a bath.

The kitchen has ample bench and cupboard space and comes complete with quality stainless steel appliances. The property is open plan living with large family room and meals area, relax in the alfresco living area. The garage is accessed by a lane at the rear. The home has ducted evaporative air conditioning.

This property is situated close to Madora Beach, Meadow Springs Shops, Golf Course and Schools. Great Location and is low maintenance

To view this well presented property call Dave Styles 0417 940 479.

This property would be ideal for the investor expected rent return \$420-\$450 per week.

As an owner occupier put your own finishing touches on it

- Land Area 416.00 square metres
- Building Area: 18.00 square metres

TYPE: Sold

INTERNET ID: 79P0840

SALE DETAILS

Offers From \$399,000

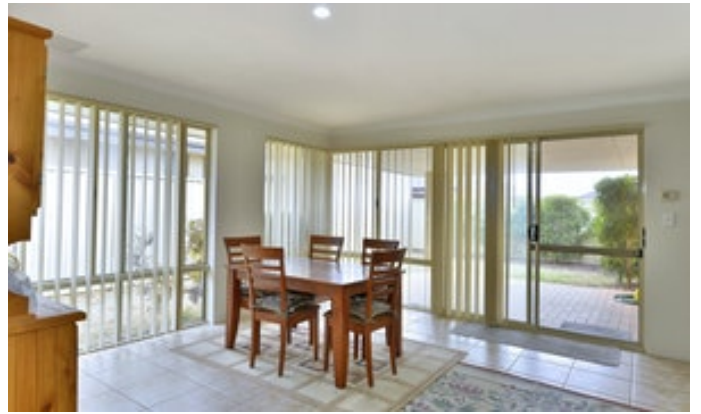
CONTACT DETAILS

**Elders Real Estate
Mandurah**

Suite 3, 4 Sutton Street
Mandurah, WA
(08) 9535 1388

Dave Styles
0417 940 479

- Bedrooms: 4
- Bathrooms: 2
- Double garage





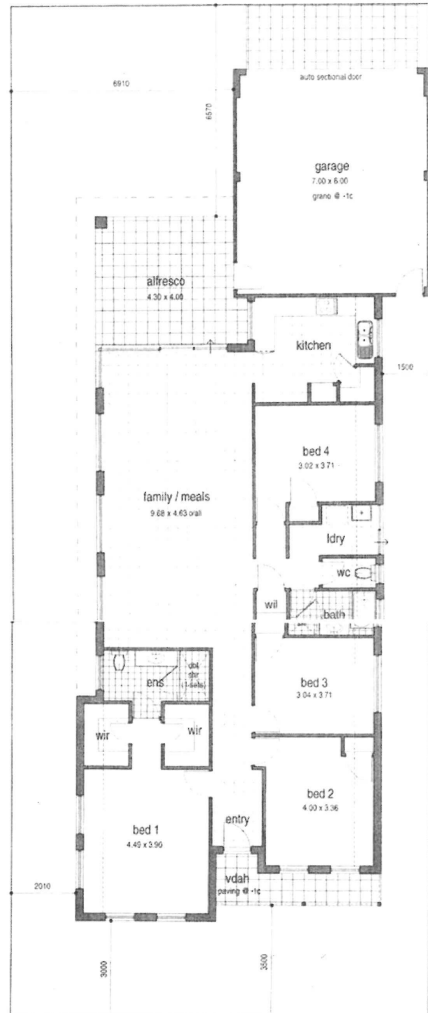
areas

house area = 165.67m²
garage area = 43.18m²
verandah area = 5.92m²
alfresco area = 17.82m²
total area = 232.59m²

site coverage calculation:

house area = 165.67m²
garage area = 43.18m²
total area = 208.85m²
lot area = 416m²
site coverage = 50.2%

pioneer
scale 1:100



elevation 1
scale 1:100