



232 Parkers Road, GAWLER BELT, SA 5118

UNDER CONTRACT BY CHRISTOPHER HURST

SPACIOUS HOME ON 10 ACRES

Located in the very popular area of Gawler Belt that enjoys easy access to Adelaide and it's northern suburbs via the northern expressway, this very well established property has been set up for horses, however the property could be easily converted to suit various other pursuits.

The 5 bedroom home has been extensively renovated and extended to include an ensuite and walk in robe to the main bedroom.

There is a lounge room, dining room, timber kitchen with granite bench tops, study, a large open living/games room with a bar which is highlighted with cathedral ceilings.

There is a new reverse cycle ducted air conditioner, a slow combustion heater, lots of built in cupboard, 9kw solar system and more.

Outside there is a 30x40 4 stable barn with tack room and feed room, a round yard, 6 well fenced paddock, 6 yards, a dressage area plus extra sheds and carport.

The particulars contained herein are supplied for information only and shall not be taken as a representation in any respect on the part of the vendor or its agent. Interested parties should contact the nominated person or office for full and current details.

TYPE: Sold

INTERNET ID: 80P0030

SALE DETAILS

\$730,000 - \$780,000

CONTACT DETAILS

Elders Real Estate Gawler

37 Murray Street

GAWLER, SA

08 8522 1988

RLA: 64256

Christopher Hurst

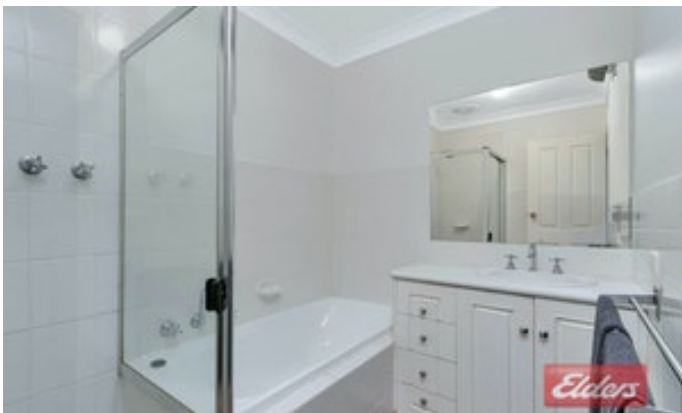
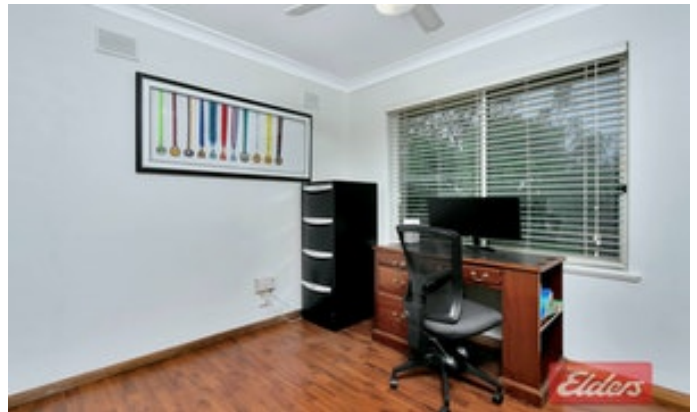
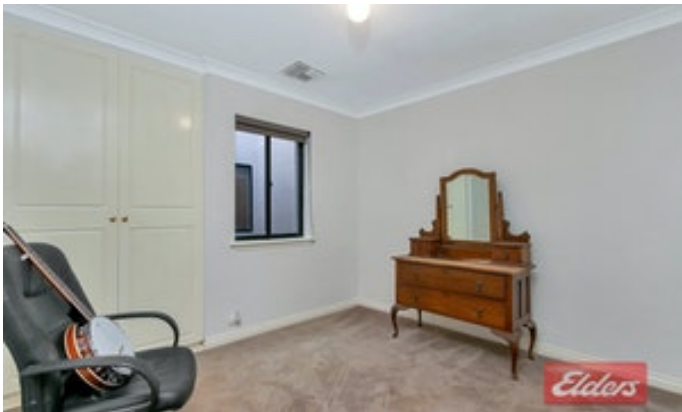
0412 897 020

**Please remember - You must wear a mask when inspecting a property.

All information contained herein is gathered from sources deemed to be reliable. However, we cannot guarantee its accuracy and interested persons should seek their own enquiries.

- Land Area 10 acres
- Bedrooms: 5
- Bathrooms: 2
- Double garage
- Double carport

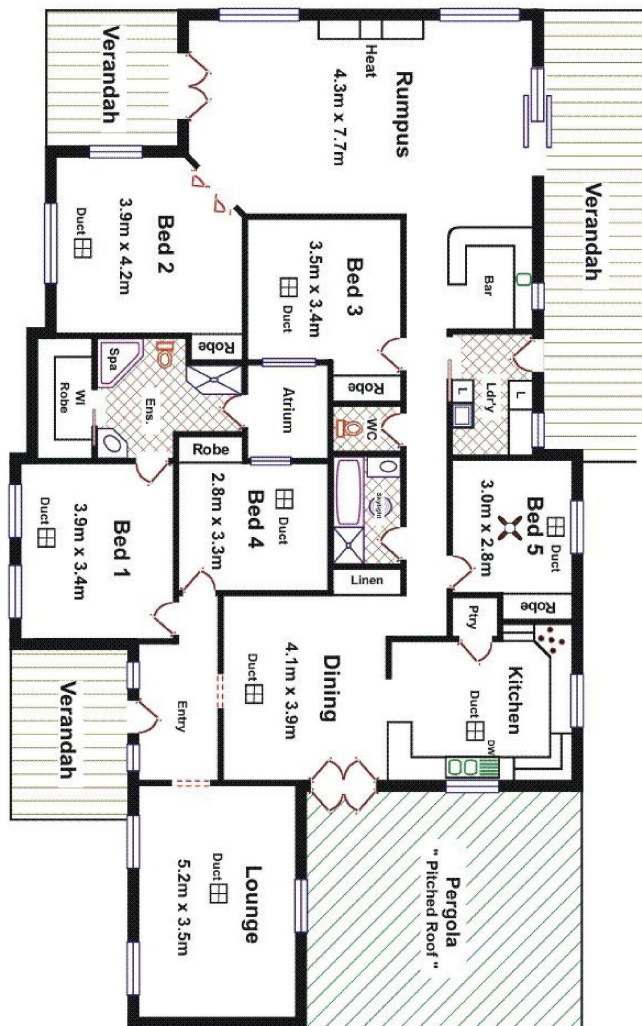








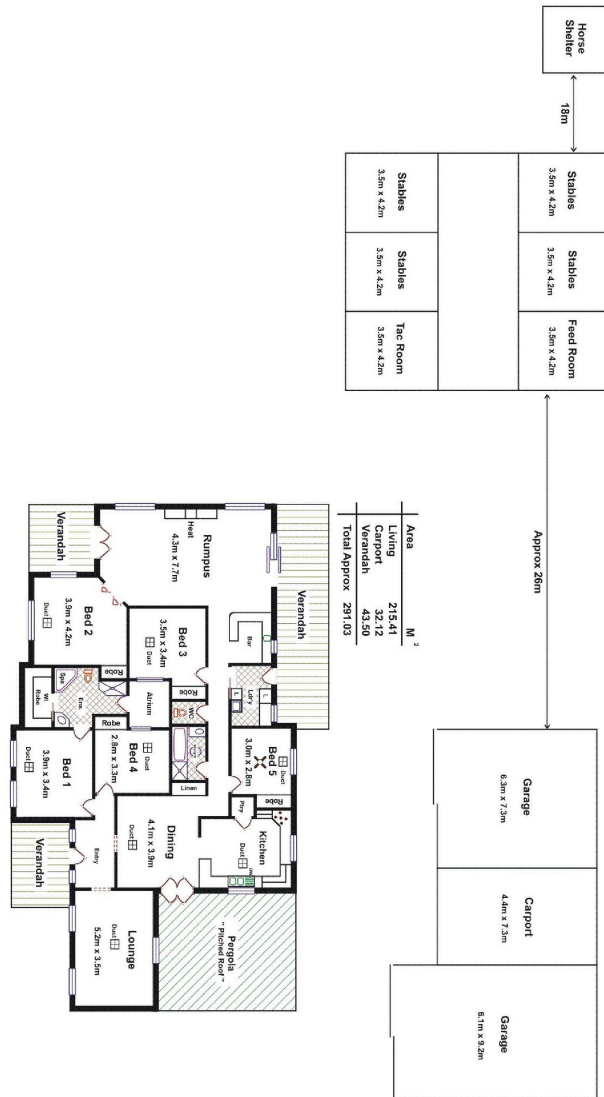
232 Parkers Road, Gawler Belt



Area	M ²
Living	215.41
Carport	32.12
Verandah	43.50
Total Approx	291.03

Please note: This drawing is for illustration purposes only. All measurements are approximate and details intended to be relied upon should be independently verified.

232 Parkers Road, Gawler Belt



Please note: This drawing is for illustration purposes only. All measurements are approximate and details intended to be relied upon should be independently verified.