



120B Calton Road, KALBEEBA, SA 5118

UNDER CONTRACT BY CHRISTOPHER HURST

HUGE HOME ON 1 1/4 ACRES

Situated on a big 5000m2 allotment in the very popular area of Kalbeeba, this property is located just a short walk to shops and parks in the neighbouring suburb of Gawler East giving you the opportunity to enjoy plenty of space and room to move in a very handy location.

Built in 2005 this expansive 4 bedroom home has an ensuite and huge walk in robe to the main bedroom, there are 4 living areas including a formal lounge room, formal dining room, an open plan kitchen, meals, family room, a separate games room, plus another upstairs living area.

The home enjoys inside access from the double garage, a 3rd toilet, spa in the main bathroom, ducted evaporative air conditioning, a slow combustion heater, alarm system, solar panels, plenty of rainwater, built in cupboards and more.

Outside there is a large gable roofed outdoor entertaining area, a pool (in need of some attention) and lots of shed space that includes a lined room that is complete with a bathroom.

The particulars contained herein are supplied for information only and shall not be taken as a representation in any respect on the part of the vendor or its agent. Interested parties should contact the nominated person or office for full and current details.

TYPE: Sold

INTERNET ID: 80P0249

SALE DETAILS

\$950,000 - \$1,050,000

CONTACT DETAILS

Elders Real Estate Gawler

37 Murray Street

GAWLER, SA

08 8522 1988

RLA: 64256

Christopher Hurst

0412 897 020

If your looking for a big house, big block and a big shed in a very convenient location then here it is!

All information contained herein is gathered from sources deemed to be reliable. However, we cannot guarantee its accuracy and interested persons should seek their own enquiries.

- Land Area 5,000.00 square metres
- Bedrooms: 4
- Bathrooms: 2
- Car Parks: 4
- Double garage

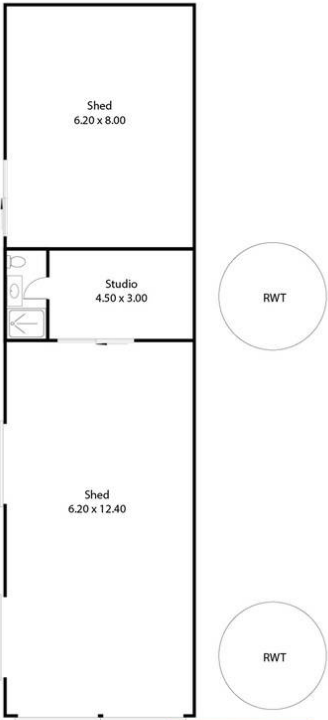
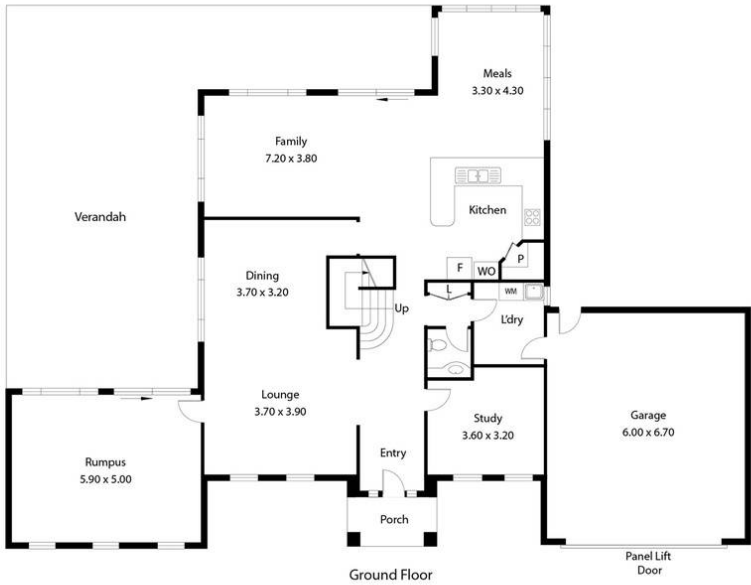








1208 Calton Road,
KALBEEBA



Living:	276.035QM
Porch:	4.705QM
Garage:	40.205QM
TOTAL:	320.935QM

This Drawing is for illustration purposes only. All measurements are internal and approximate. Details intended to be relied upon should be independently verified.