



## 51 Panter Street, WILLASTON, SA 5118

UNDER CONTRACT BY CHRISTOPHER HURST

STUNNING CHARACTER HOME ON 1/2 ACRE

Centrally located close to walking tracks, parklands and a short walk to Gawler's town centre this impressive property has lots to offer.

Named "Bridgeview" This Circa 1890 Queen Anne style stone home has ornate return verandahs and is full of the character features you would expect like a central hallway, polished timber floors, high ceilings, open fire places, big rooms and a cellar. The home was extensively extended and upgraded by the current owners and has 4 bedrooms, a study, 2 toilets, formal living room, huge open plan living/dining area that includes the beautiful blockwood kitchen complete with stone bench tops and walk in pantry.

There is ducted reverse cycle air conditioning, a slow combustion heater, lots of storage, a fantastic outdoor entertaining area, a lined shed/games room, a separate side access through to a big shed, a double garage and other carports/sheds all very well planned and laid out on a fully established approximately 1/2 Acre allotment.

**TYPE:** Sold

**INTERNET ID:** 80P0697

**SALE DETAILS**

**\$695,000 - \$750,000**

**CONTACT DETAILS**

**Elders Real Estate Gawler**

37 Murray Street

GAWLER, SA

08 8522 1988

RLA: 64256

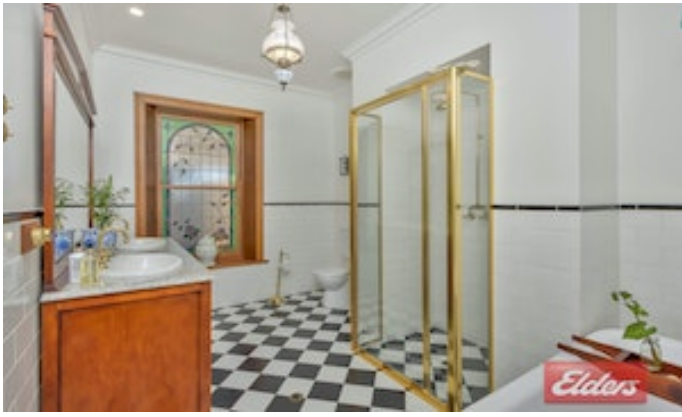
**Christopher Hurst**

0412 897 020

All information contained herein is gathered from sources deemed to be reliable. However, we cannot guarantee its accuracy and interested persons should seek their own enquiries.

- Bedrooms: 4
- Bathrooms: 1
- Double garage
- 3 car carport

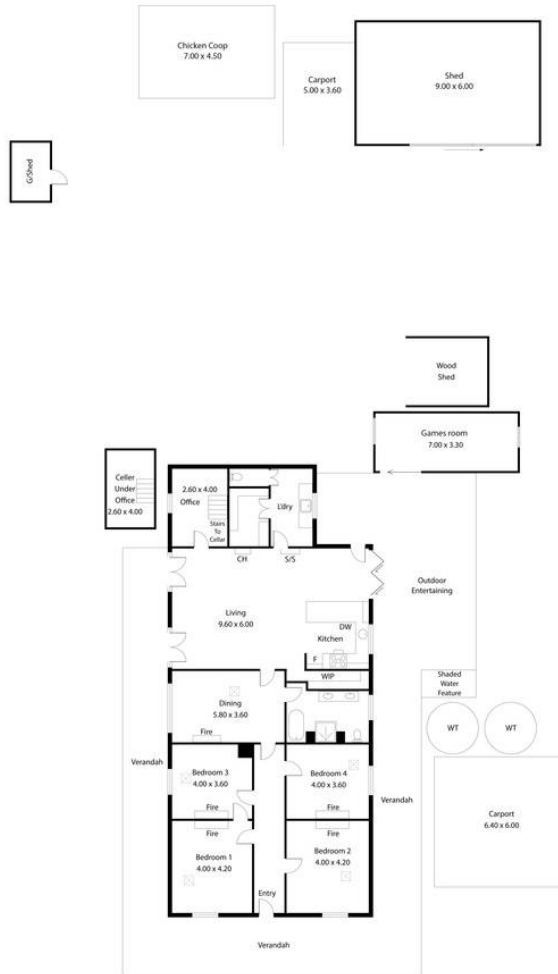








51 Pander Street,  
WILLASTON



Living:	204.05Q/M
Verandah/Outdoor:	168.05Q/M
Carport/Chicken Coop:	81.05Q/M
Shed/Cellar:	91.06Q/M
<b>TOTAL:</b>	<b>553.145Q/M</b>

Produced by **Elders**  
 This Drawing is for illustration purposes only. Measurements and areas are internal and approximate. All dimensions and areas should be independently verified.