



## 9 Freeman Court, GAWLER EAST, SA 5118

UNDER CONTRACT BY CHRISTOPHER HURST

### STUNNING AND SPACIOUS

Located in a quiet culdesac in a very desirable part of Gawler East this impressive property offers you plenty of room to move...

The expansive home has 3 living areas including a massive open plan area featuring a near new kitchen complete with stone bench tops, a 900kw cooker and walk in pantry, a dining area and living room.

There is a formal lounge, dining room plus another living/rumpus room that could easily be converted back to a 4th bedroom. The home has a separate study, ensuite and walk in robe to the main bedroom and a long list of features like ducted gas heating, ducted evaporative air conditioning, lots of built in cupboards, alarm system, freshly painted, near new flooring, upgraded bathroom, a double carport under the main roof that leans through to a fantastic semi enclosed outdoor entertaining area complete with outdoor kitchen.

There is a lovely in ground swimming pool, sheds, beautifully established gardens all on

The particulars contained herein are supplied for information only and shall not be taken as a representation in any respect on the part of the vendor or its agent. Interested parties should contact the nominated person or office for full and current details.

**TYPE:** Sold

**INTERNET ID:** 80P0748

### SALE DETAILS

**\$695,000 - \$750,000**

### CONTACT DETAILS

**Elders Real Estate Gawler**

37 Murray Street

GAWLER, SA

08 8522 1988

RLA: 64256

**Christopher Hurst**

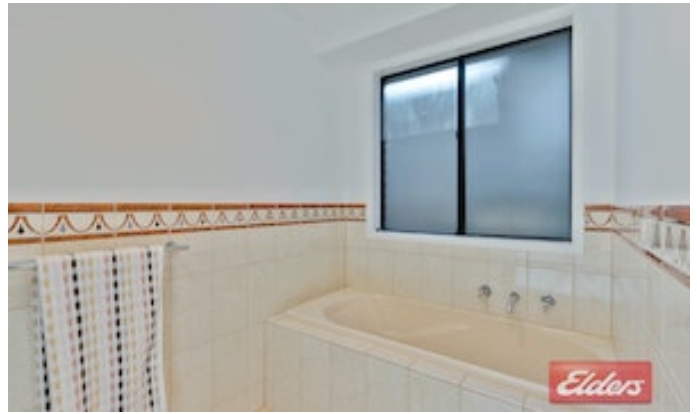
0412 897 020

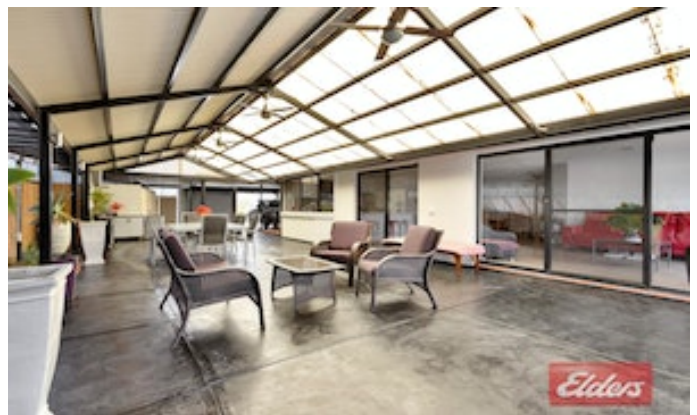
just under 1/2 acre 1754m2 allotment.

All information contained herein is gathered from sources deemed to be reliable. However, we cannot guarantee its accuracy and interested persons should seek their own enquiries.

- Land Area 1,754.00 square metre
- Bedrooms: 4
- Bathrooms: 2
- Double carport









10 Freeman Court,  
**GAWLER EAST**



Living:	235.995Q.M
Porch:	3.00SQ.M
Carport:	28.055Q.M
Verandah:	88.025Q.M
<b>TOTAL:</b>	<b>355.065Q.M</b>

Produced by open2view.com

This Drawing is for illustration purposes only. All measurements are internal and approximate. Details intended to be relied upon should be independently verified.