

## 14 Sears Road, EVANSTON GARDENS, SA 5116

UNDER CONTRACT BY JEFF LIND

STUNNING SANDSTONE FRONTED 4 BEDROOM PLUS STUDY HOME

This stunning home offers loads of street appeal and has some excellent features including high ceilings, large open plan kitchen/dine/family area, home theatre room and spa bath to the main bathroom.

The main bedroom has a bay window, ensuite and walk in robe and the other 3 bedrooms all have built in robes. The large kitchen which is the hub of the home features an induction cook top, plenty of bench space, dishwasher and walk in pantry and overlooks the large family dine area.

There is a generous sized study, main bathroom with spa bath and laundry.

The main living and traffic areas have quality tiled floors.

The paved driveway leads to a double garage with auto door which has direct access to the house.

The allotment is well fence and the yard is a blank canvass ready for you to add the

The particulars contained herein are supplied for information only and shall not be taken as a representation in any respect on the part of the vendor or its agent. Interested parties should contact the nominated person or office for full and current details.

**TYPE:** Sold

**INTERNET ID:** 80P3019

**SALE DETAILS**

**\$499,000 - \$549,000**

**CONTACT DETAILS**

**Elders Real Estate Gawler**

37 Murray Street

GAWLER, SA

08 8522 1988

RLA: 64256

**Jeff Lind**

0413 186 214

finishing touches.

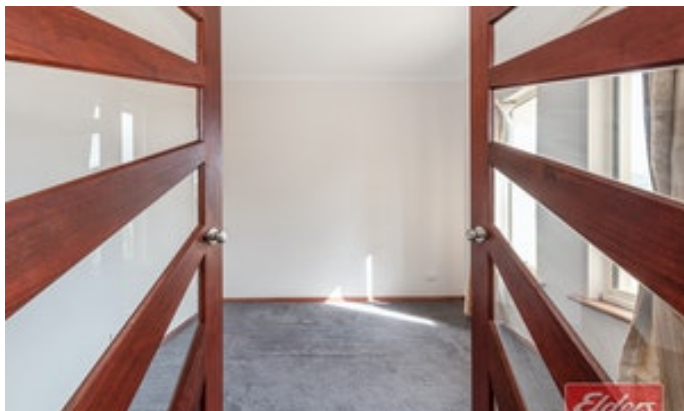
This home is one of the finest you will see and is ready to move straight into. Why build?

To Inspect call Jeff Lind on 0413186214.

All information contained herein is gathered from sources deemed to be reliable. However, we cannot guarantee its accuracy and interested persons should seek their own enquiries.

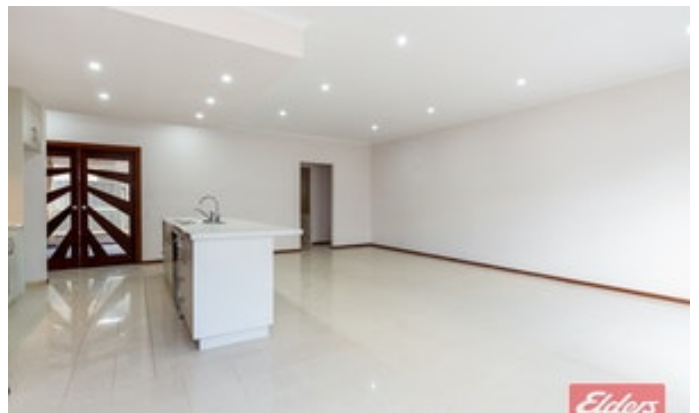
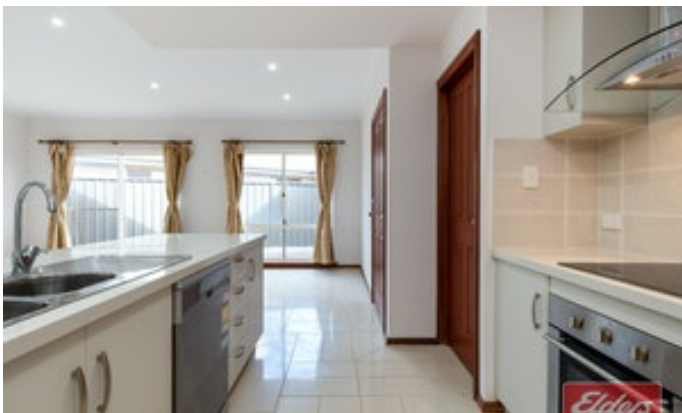
- Land Area 458.00 square metres
- Bedrooms: 4
- Bathrooms: 2
- Double garage













14 Sears Road  
EVANSTON GARDENS



| AREA   | SQM   |
|--------|-------|
| Living | 171.9 |
| Garage | 33.0  |
| Porch  | 3.0   |
| TOTAL  | 207.9 |



This sketch is for illustration purposes only. All measurements are metric, being internal, not to scale, and approximate.  
Photography and Floorplan produced by propertylaneimages.com.au