

138 Murray Street, GAWLER, SA 5118

Secure Investment to National Tenant

Centrally located in the main street of Gawler - one of South Australia's fastest growing regions.

Atwork Australia Pty Ltd (parent company Medhealth) is a leading provider of employment services for the Australian Government with over 300 offices nationally.

Perfect entry level commercial investment property or addition to any portfolio - enquire today as this opportunity will not last long.

Key Features:

- 3 year lease commencing 1/7/2022 to 30/6/2025
- Option to renew the lease for a further 2 years to 30/6/2027
- Commencing rental \$32,000 p.a. plus GST and outgoings
- High profile location in Gawler's main street

TYPE: Sold

INTERNET ID: 80P3157

SALE DETAILS

[Expressions of interest](#)

CONTACT DETAILS

Elders Real Estate Gawler

37 Murray Street

GAWLER, SA

08 8522 1988

RLA: 64256

Jackson Dare

0423 771 611

- Zoning: Township Main Street - TMS

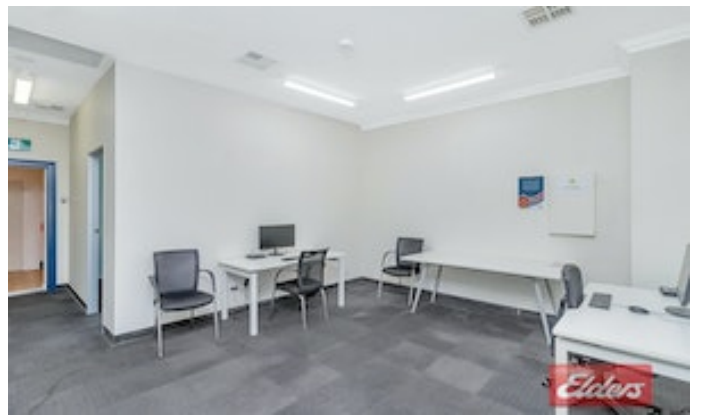
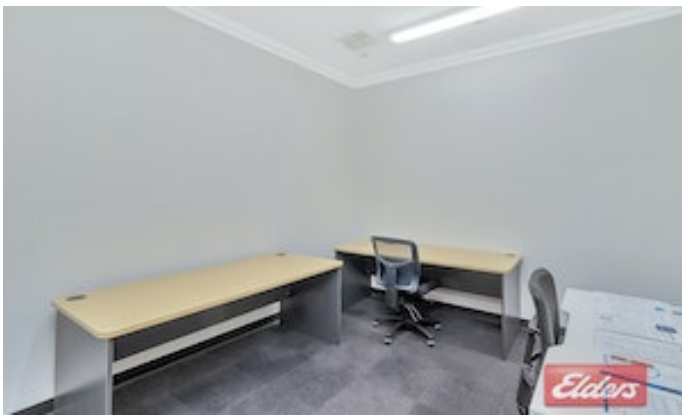
- 0% stamp duty!

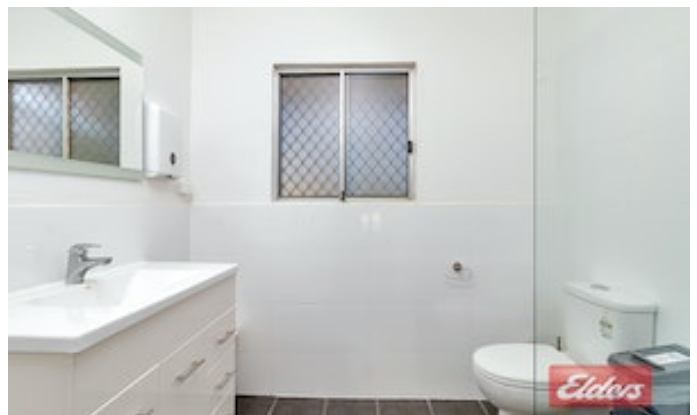
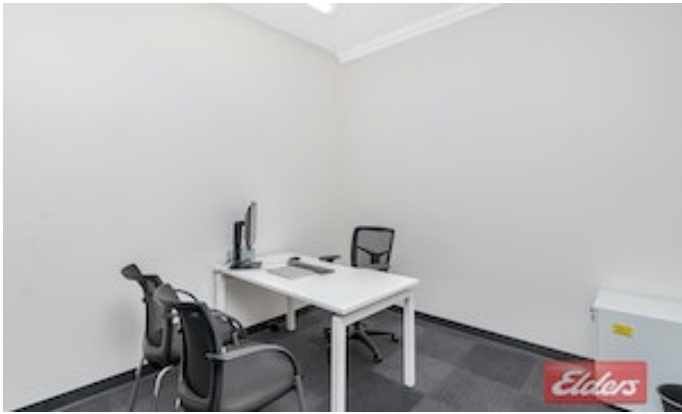
For further details contact Jackson Dare 0423 771 611

All information contained herein is gathered from sources deemed to be reliable. However, we cannot guarantee its accuracy and interested persons should seek their own enquiries.

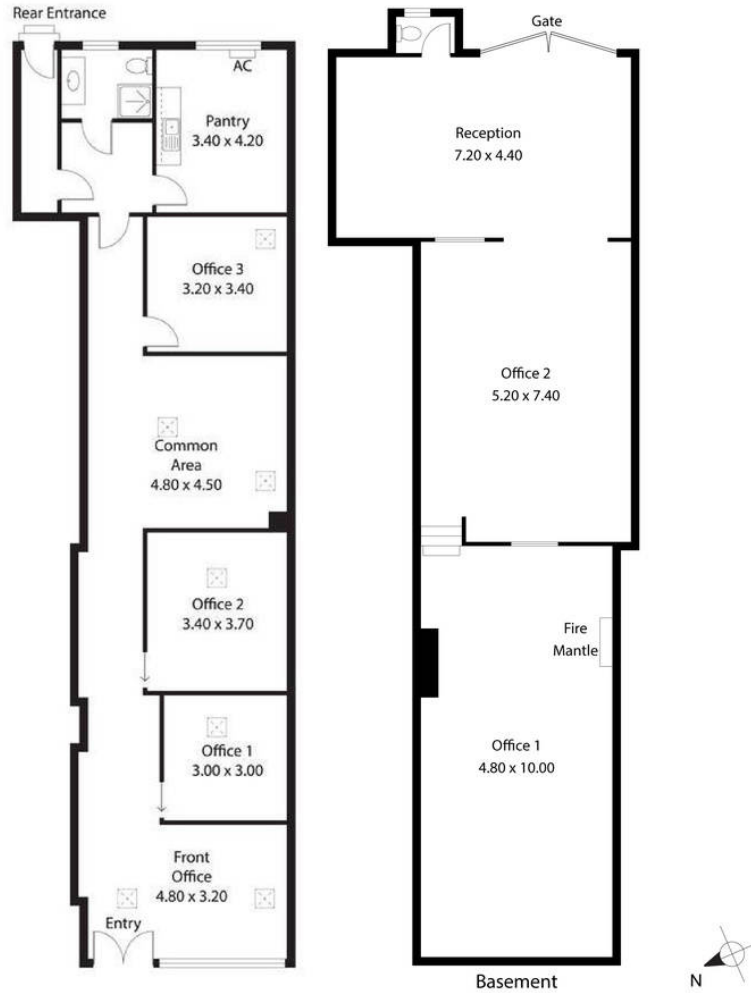
*approximately

- Land Area 166.97 square metres
- Commercial Type:
- Building Area: 116.00 square metres





138 Murray Street,
GAWLER



Living: 129.97SQ.M
TOTAL: 129.97SQ.M

This Drawing is for illustration purposes only. All measurements are internal and approximate. Details intended to be relied upon should be independently verified.