



## 33 Goldfinch Way, HEWETT, SA 5118

UNDER CONTRACT BY JORDAN DARE

FAMILY HOME ON GOLDFINCH WAY!

Located in the desirable area of Hewett is this four-bedroom, two-bathroom family home. Just minutes away from the main street of Gawler, Sturt Highway, and walking distance to Hewett Primary School.

Features include a spacious tiled kitchen with dishwasher, dining and living area as well as a separate formal lounge room at the front of the property.

A walk-in robe to bedroom 1 and built in robe to second bedroom plus a linen cupboard in living area for extra storage.

Main bathroom features separate vanity area and bathtub.

Newly installed evaporative air con (2023) with gas ducted heating throughout for all year-round comfort.

Outside you will find a single carport, undercover patio area surrounded by neat low

The particulars contained herein are supplied for information only and shall not be taken as a representation in any respect on the part of the vendor or its agent. Interested parties should contact the nominated person or office for full and current details.

**TYPE:** Sold

**INTERNET ID:** 80P3388

**SALE DETAILS**

**\$490,000 - \$539,000**

**CONTACT DETAILS**

**Elders Real Estate Gawler**

37 Murray Street

GAWLER, SA

08 8522 1988

RLA: 64256

**Jordan Dare**

0433 982 887

maintenance gardens.

Please note the pool at property not currently in use.

Currently tenanted - periodic lease.

Year Built - 1999

Land size - 510sqm2

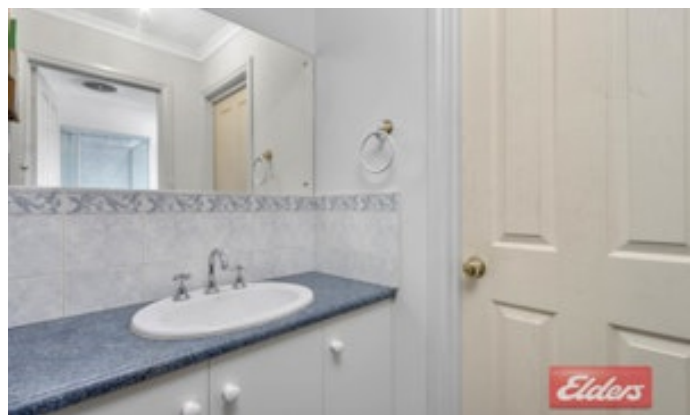
Easements â## NIL

Council - Light

All information contained herein is gathered from sources deemed to be reliable. However, we cannot guarantee its accuracy and interested persons should seek their own enquiries.

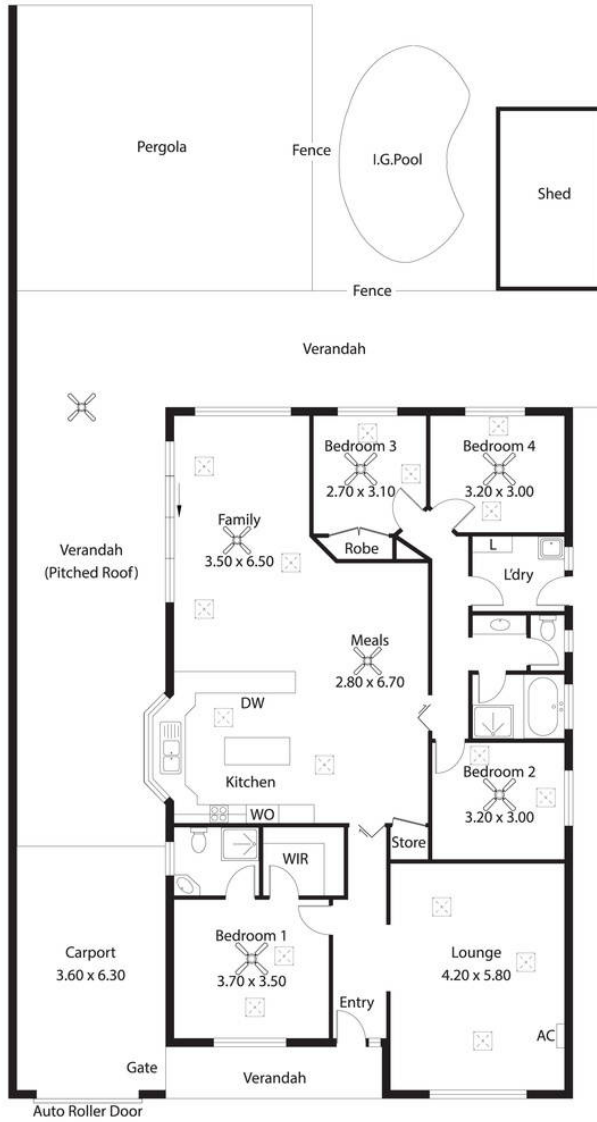
- Land Area 510.00 square metres
- Bedrooms: 4
- Bathrooms: 2
- Single garage







33 Goldfinch Way,  
HEWETT



Living:	157.91SQ.M
Verandah:	86.05SQ.M
Carport:	22.68SQ.M
Pergola:	50.61SQ.M
Shed:	11.59SQ.M
<b>TOTAL:</b>	<b>328.84SQ.M</b>

This Drawing is for illustration purposes only. All measurements are internal and approximate. Details intended to be relied upon should be independently verified.