



## 63 Margaret Street, WILLIAMSTOWN, SA 5351

One of the Barossa's Finest –Views, Space, Style and Serenity on 5.7 Acres (2.31ha) with Subdivision Potential

Tucked away on over 2.3 hectares of scenic countryside, this beautifully presented property blends timeless character with modern comfort and remarkable rural amenity. From the brush box timber floors to the sweeping views over farmland, every detail has been thoughtfully maintained and designed for lifestyle living.

Behind electric gates and with a sealed bitumen driveway, the home offers peace, privacy and panoramic outlooks, with no close neighbours and future subdivision potential (STCC).

At a Glance:

- Four bedrooms plus study including a spacious master with walk-in robe, modern ensuite, and tranquil fernery views
- High ceilings, brush box timber floors, and a genuine sense of warmth throughout
- Formal lounge with open fireplace, formal dining, and a separate meals area

**TYPE:** For Sale

**INTERNET ID:** 80P3476

**SALE DETAILS**

**EXPRESSION OF INTEREST**

**CONTACT DETAILS**

**Elders Real Estate Gawler**

37 Murray Street

GAWLER, SA

08 8522 1988

RLA: 64256

**Jeff Lind**

0413 186 214

- Stunning kitchen with Caesarstone benchtops, double oven, ceramic cooktop, walk-in pantry, dishwasher and rural views
- Modern bathrooms with underfloor heating, large laundry, ducted reverse cycle and evaporative air, plus combustion heating
- Front peaked verandah with electric blinds - perfect for entertaining or enjoying the changing seasons with views over rural farmland
- Full-length rear verandah with blinds, offering extended living space all year round
- Single garage plus a 9.5m x 6.5m x 4m-high insulated shed with concrete floor and power ideal for caravan, motorhome or boat storage
- Extensive main shed with power and concrete floor
- Rainwater tanks plumbed to the home, and a solar power system giving energy efficiency
- Multiple fenced paddocks - ideal for hobby farming with alpacas, goats, or sheep
- Lovingly cared for, well maintained, just move in and enjoy
- Subdivide for profit or for an allotment to build a second family home (subject to council consent)
- Truly a fantastic investment.

This is the ultimate treechange - a short walk to Williamstown's facilities, 20 minutes to Gawler, and with all the natural beauty and lifestyle benefits of the Southern Barossa. Whether you're seeking a peaceful family estate, a rural escape, or a flexible property with space to grow, 63 Margaret Street stands in a class of its own.

For more information please call Jeff Lind on 0413186214.

The property is for sale by Expression of Interest with offers closing Midday on Friday the 31st October 2025.

Please note: This property will not be available for inspection until Thursday 16th of October at a time to be advised.

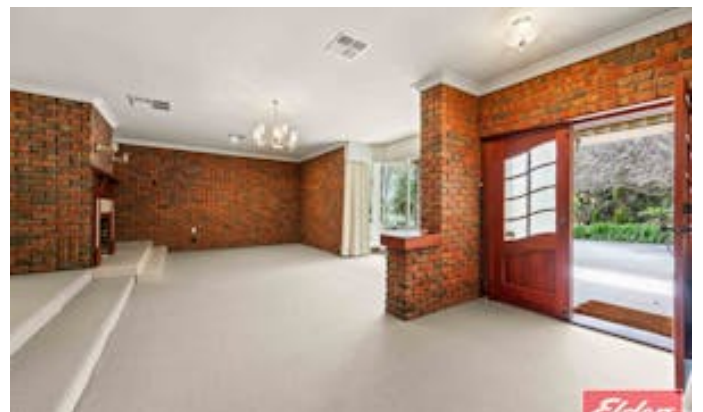
Ready to make an offer? Head to [eldersgawler.com.au](https://eldersgawler.com.au), select the property, and click the 'Make an Offer' tab to submit your offer online in just a few steps.

All information contained herein is gathered from sources deemed to be reliable. However, we cannot guarantee its accuracy and interested persons should seek their own enquiries.

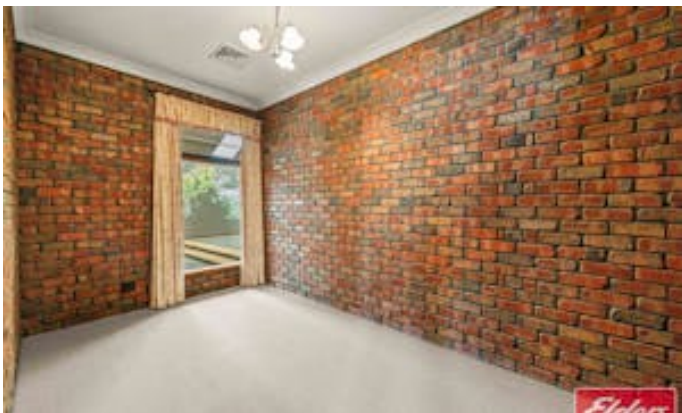
Other features: Area Views, Combustion Heater

- Land Area 5.7 acres
- Bedrooms: 4
- Bathrooms: 2
- 3 car garage
- Single carport
- Ensuite

















63 Margaret Street ,  
WILLIAMSTOWN

