



3 Eastick Court, EVANSTON, SA 5116

UNDER CONTRACT BY JEFF LIND

PERFECT RETIREMENT OR INVESTMENT HOME, QUIET LOCATION, LOW MAINTENANCE

This modern 3 bedroom brick veneer home has been set up with retirement in mind by the current owner and is set in a quiet no through road and is low maintenance. The home features a formal lounge, family room, dining room and a well appointed kitchen with gas cooktop, electric oven, walk in pantry and dishwasher provision.

There are three good sized bedrooms with ensuite and walk in robe to the master and built in robes to bedrooms 2 and 3. There is also a good size second bathroom and laundry. Year round comfort is provided by ducted reverse cycle air conditioning and most windows have roller shutters making a perfect lock and leave home for those who travel a lot or making it ideal for the security conscious.

A double paved driveway leads to the double garage with two auto doors to the front and one to the rear for easy access to the rear yard and direct access to inside.

TYPE: Sold

INTERNET ID: 80P3613

SALE DETAILS

\$475,000 - \$499,000

CONTACT DETAILS

Elders Real Estate Gawler

37 Murray Street

GAWLER, SA

08 8522 1988

RLA: 64256

Jeff Lind

0413 186 214

There is a large peaked verandah being perfect for entertaining family or friends, a garden shed and the rear yard is paved for easy care and is well fenced.

This property is absolutely perfect for retirees who want low maintenance living, singles or investors who want an easy care property.

For details or to inspect this move in ready property contact Jeff Lind on 0413186214.

All information contained herein is gathered from sources deemed to be reliable. However, we cannot guarantee its accuracy and interested persons should seek their own enquiries.

- Land Area 362.00 square metres
- Bedrooms: 3
- Bathrooms: 2
- Double garage





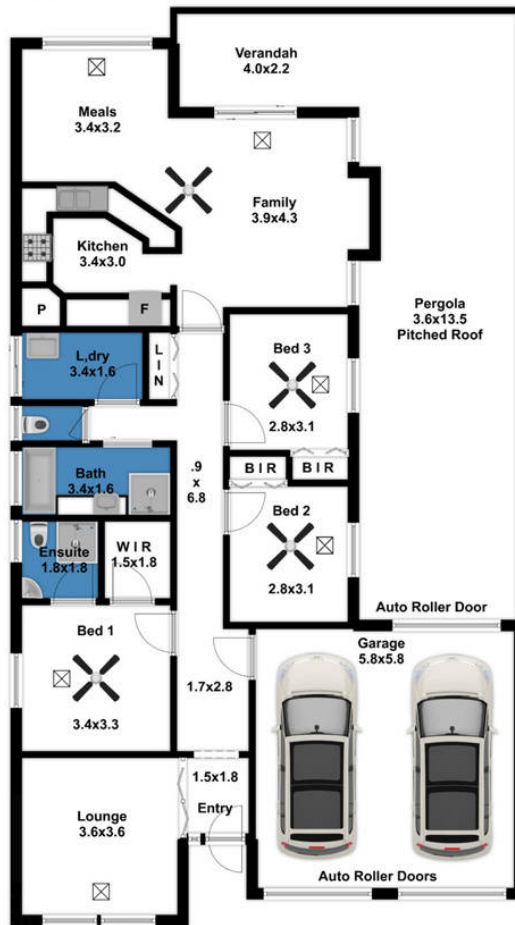




3 Eastick Court
EVANSTON



AREA	SQM
Living	114.7
Garage	33.6
Pergola	48.6
Verandah	8.8
Shed	4.0
TOTAL	209.7



This sketch is for illustration purposes only. All measurements are metric, being internal, not to scale, and approximate.

Photography and Floorplan produced by propertylaneimages.com.au

