



53 Cliff Road, ROSEWORTHY, SA 5371

4 BEDROOM HOME ON 1 ACRE

Please note: As we have received offers, best and final offers for this property need to be submitted by 5pm Wednesday 10th of September.

Looking for some room to move?

Situated on a big 1 acre allotment in the popular and rapidly growing township of Roseworthy over looking farm land this well established property offers you plenty of space.

The 2008 built 4 bedroom home has an ensuite and walk in robe to the main bedroom, there is a spacious open plan living area complete with a dining area, family room and the lovely kitchen has a large island bench. There is a separate lounge/home theatre room, inside access from the double garage, and lots of features like tiled living areas, ducted reverse cycle air conditioning, a split system air conditioner and lots of built in cupboards.

Outside you will find an expansive paved outdoor entertaining area/verandah, a 6x9 metre shed, a separate double carport, 45,000 litres of rainwater, veggie boxes, tool

The particulars contained herein are supplied for information only and shall not be taken as a representation in any respect on the part of the vendor or its agent. Interested parties should contact the nominated person or office for full and current details.

TYPE: For Sale

INTERNET ID: 80P4142

SALE DETAILS

\$800,000 - \$880,000

CONTACT DETAILS

Elders Real Estate Gawler

37 Murray Street

GAWLER, SA

08 8522 1988

RLA: 64256

Christopher Hurst

0412 897 020

shed, established gardens and the rear yard is fenced off which would be great to keep in the dog or little kids.

All information contained herein is gathered from sources deemed to be reliable. However, we cannot guarantee its accuracy and interested persons should seek their own enquiries.

- Land Area 4,000.00 square metres
- Bedrooms: 4
- Bathrooms: 2
- Car Parks: 2
- Double garage

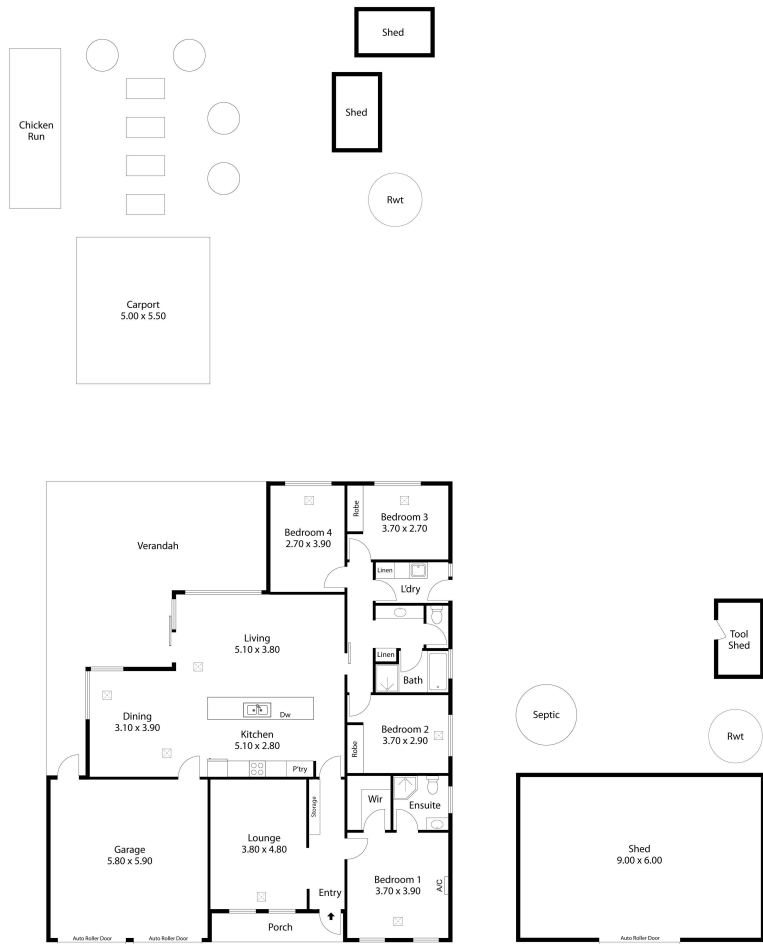








52 Cliff Road,
ROSEWORTHY



Living:	193.92SQ.M
Verandah:	52.65SQ.M
Carport:	27.50SQ.M
Porch:	5.26SQ.M
Shed:	68.79SQ.M
<hr/>	
TOTAL:	348.12SQ.M



This Drawing is for illustration purposes only. All measurements are internal and approximate. Details intended to be relied upon should be independently verified.