

86 High Street, ROSEWORTHY, SA 5371

Spacious 2022 Built Home

This beautifully presented 2022 built home offers modern family living with quality finishes, multiple living areas and an easy care lifestyle in the St Yves Estate, one of Roseworthy's fastest growing communities.

Offering 3 spacious bedrooms, the master bedroom is complete with a walk-in robe and generous ensuite, while bedrooms 2 and 3 feature built-in robes.

A separate lounge/home theatre room with feature barn doors that provides the perfect second living space.

The stunning kitchen features stone benchtops, a 900mm gas cooker, dishwasher and a large butler's pantry, all overlooking an open plan meals and living area at the heart of the home, complimented by a striking red brick feature wall.

Additional features include high ceilings, plantation shutters, reverse cycle ducted air conditioning, a slow combustion heater, extensive built-in storage and an impressive 11kW solar system.

TYPE: For Sale

INTERNET ID: 80P4180

SALE DETAILS

\$799,000 - \$849,000

CONTACT DETAILS

Elders Real Estate Gawler

37 Murray Street

GAWLER, SA

08 8522 1988

RLA: 64256

Christopher Hurst

0412 897 020

Outside, enjoy entertaining year round under the alfresco area complete with café blinds, while the double garage with automatic door provides secure parking and internal access.

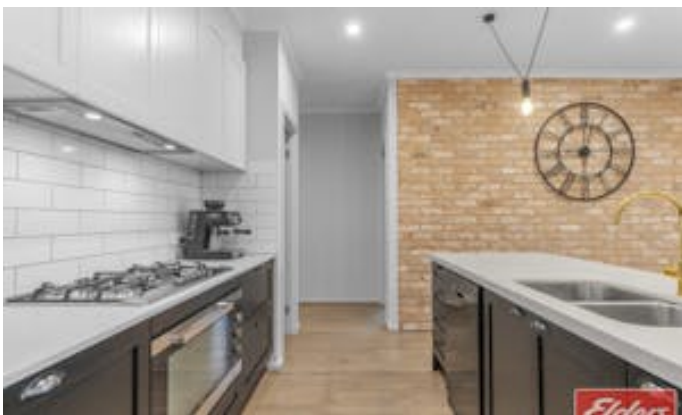
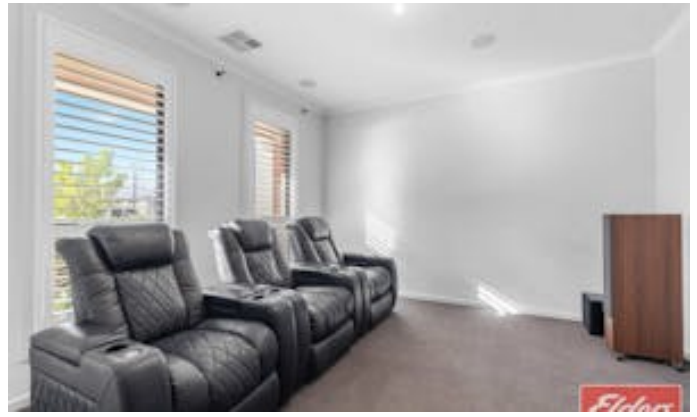
Set on an easy care 540sqm allotment, the home is perfectly positioned within walking distance to the new Trinity College, nearby parks and reserves, with easy access to Adelaide via the Northern Expressway.

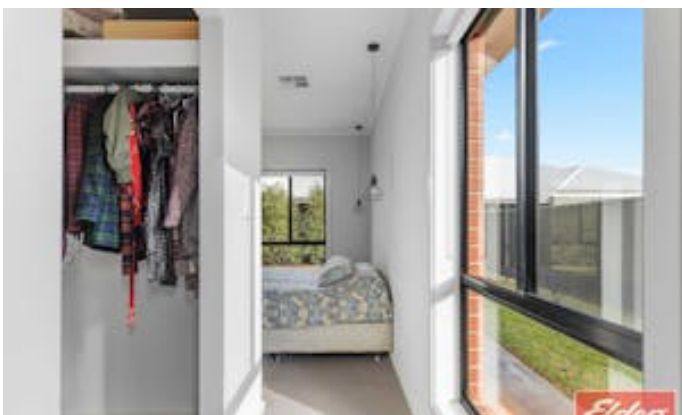
A fantastic opportunity to secure a quality modern home in a thriving and well-connected location.

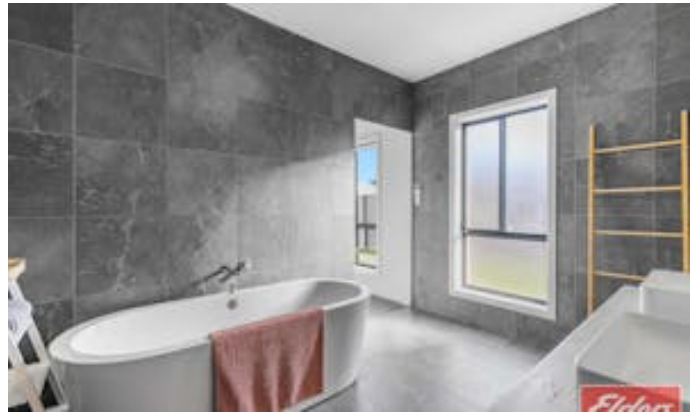
Ready to make an offer? Head to eldersgawler.com.au, select the property, and click the 'Make an Offer' tab to submit your offer online in just a few steps.

All information contained herein is gathered from sources deemed to be reliable. However, we cannot guarantee its accuracy and interested persons should seek their own enquiries.

- Land Area 540.00 square metres
- Bedrooms: 3
- Bathrooms: 2
- Double garage









86 High Street, ROSEWORTHY



Living:	196.47SQ.M
Garage:	38.67SQ.M
Porch:	8.07SQ.M
Alfresco:	20.10SQ.M
TOTAL:	263.31SQ.M



This Drawing is for illustration purposes only. All measurements are internal and approximate. Details intended to be relied upon should be independently verified.

PRODUCED BY
urban creative