

28 McKinlay Square, HEWETT, SA 5118

Simply Stunning

Beautifully positioned overlooking the McKinlay Square reserve in the ever popular area of Hewett and enjoying a short walk to parks, walking tracks and Gawler's Town Centre this immaculate property is a credit to its current owners.

The 4 bedroom home is full of style and class with a huge master bedroom and ensuite with a spa. There is a formal living room and dining room, lovely kitchen complete with stone bench tops overlooking a spacious open plan living and meals area that steps out into the impressive outdoor entertaining area.

The home is full of features including: ducted evaporative air conditioning, ducted gas heating, 3 split system air conditioners, lots of built in storage and high ceilings with quality fixtures and features throughout.

The outdoor entertaining area is superb. It is semi enclosed, expansive with zip track blinds and access from the double garage making it a wonderful area to entertain. The gardens are fully established and very low maintenance, leaving you nothing to do but move in and enjoy.

TYPE: For Sale

INTERNET ID: 80P4301

SALE DETAILS

\$900,000 - \$990,000

CONTACT DETAILS

Elders Real Estate Gawler

37 Murray Street

GAWLER, SA

08 8522 1988

RLA: 64256

Christopher Hurst

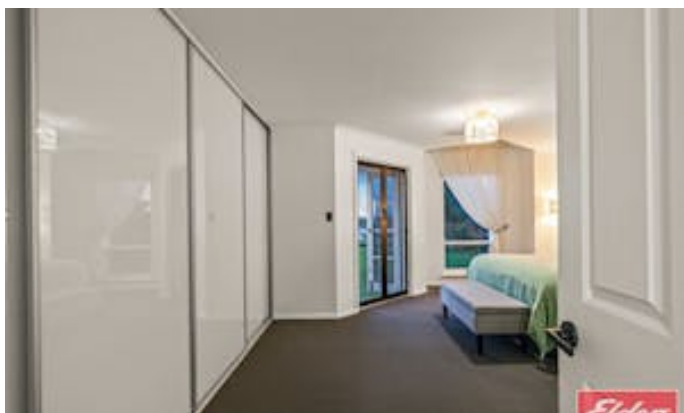
0412 897 020

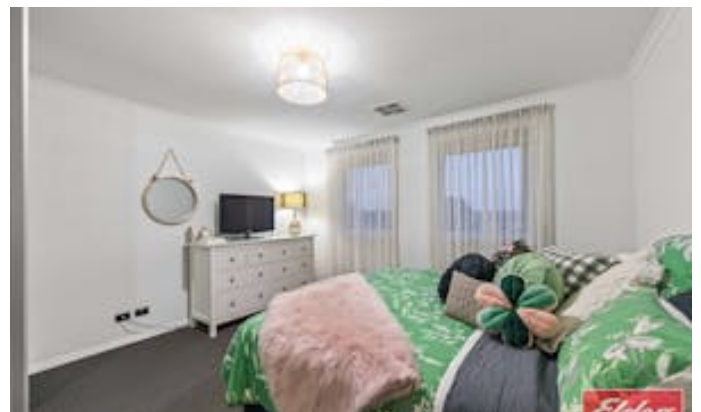
Ready to make an offer? Head to eldersgawler.com.au, select the property, and click the 'Make an Offer' tab to submit your offer online in just a few steps.

All information contained herein is gathered from sources deemed to be reliable. However, we cannot guarantee its accuracy and interested persons should seek their own enquiries.

- Land Area 529.00 square metres
- Bedrooms: 4
- Bathrooms: 2
- Double garage
- Double carport

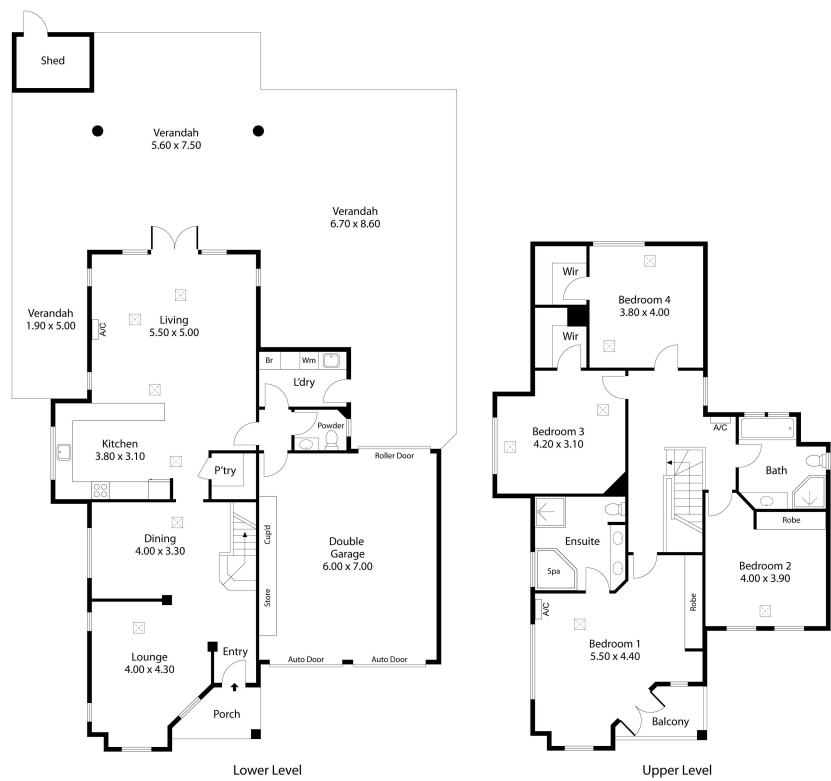








28 Mckinlay Square,
HEWETT



Living:	228.34SQ.M
Verandah:	141.22SQ.M
Garage:	42.58SQ.M
Porch:	4.30SQ.M
Balcony:	4.30SQ.M
Shed:	5.10SQ.M
TOTAL:	425.84SQ.M



This Drawing is for illustration purposes only. All measurements are internal and approximate. Details intended to be relied upon should be independently verified.