



## 14 Freeman Court, GAWLER EAST, SA 5118

### 5 Bedroom Home on a Huge 1295sqm Block

Set on a generous 1,295sqm corner allotment in a peaceful cul-de-sac, this spacious family home offers you flexibility, comfort and outstanding value in one of Gawler East's most tightly held locations.

The home features five bedrooms, a separate parents retreat and a study nook, providing plenty of space for growing families. Living is easy with a central family/living room, a separate lounge with built-in bar, and a well appointed Blackwood timber kitchen with excellent storage.

The home has ducted evaporative cooling, ducted gas heating, tiled floors throughout and lots of built in cupboards.

Outdoors the appeal continues with a large undercover entertaining area, established gardens, a chook yard, tool shed and the huge benefit of side access to a double shed perfect for extra vehicles, caravan storage or a workshop.

Offering space, versatility and a well connected location, this is an ideal choice for families or those looking for some room to move.

The particulars contained herein are supplied for information only and shall not be taken as a representation in any respect on the part of the vendor or its agent. Interested parties should contact the nominated person or office for full and current details.

**TYPE:** For Sale

**INTERNET ID:** 80P4383

#### **SALE DETAILS**

**\$795,000 - \$850,000**

#### **CONTACT DETAILS**

**Elders Real Estate Gawler**

37 Murray Street

GAWLER, SA

08 8522 1988

RLA: 64256

**Christopher Hurst**

0412 897 020

Please note: This property will be having its first open inspection next weekend at a time to be advised. Please send us an enquiry and we will advise the time once confirmed.

Ready to make an offer? Head to [eldersgawler.com.au](http://eldersgawler.com.au), select the property, and click the 'Make an Offer' tab to submit your offer online in just a few steps.

All information contained herein is gathered from sources deemed to be reliable. However, we cannot guarantee its accuracy and interested persons should seek their own enquiries.

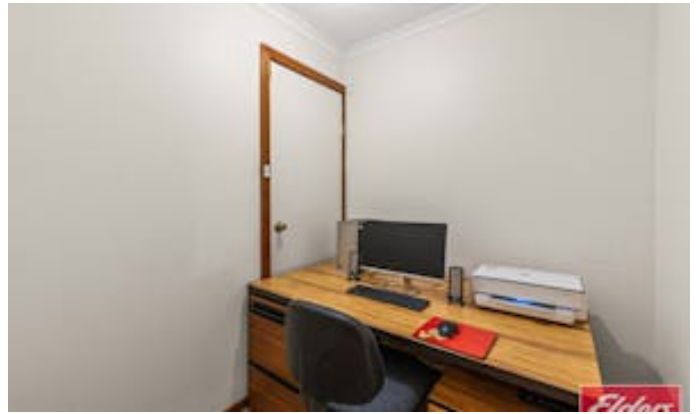
- Land Area 1,295.00 square metre
- Bedrooms: 5
- Bathrooms: 2
- Double garage















14 Freeman Court,  
**GAWLER EAST**



Living:	167.50SQ.M
Verandah:	38.65SQ.M
Garage:	54.00SQ.M
Pergola:	18.00SQ.M
Porch:	1.73SQ.M
<b>TOTAL:</b>	<b>279.83SQ.M</b>



This Drawing is for illustration purposes only. All measurements are internal and approximate. Details intended to be relied upon should be independently verified.