



16 Elmwood Circuit, BLAKEVIEW, SA 5114

Charming 3-Bedroom Family Home in a Convenient Location

Offering a perfect blend of style, functionality, and location, this updated 3-bedroom home is ready to move straight in and enjoy. Its versatile floorplan and prime position make it an excellent opportunity for families, downsizers, or investors.

Key features:

- Freshly painted throughout the interior and exterior
- Brand new flooring throughout
- Spacious master bedroom with built-in robes and ceiling fan
- Light-filled L-shaped lounge and dining area
- Well-equipped gas kitchen featuring a walk-in pantry, overlooking the family room
- New split-system air conditioner to lounge, ceiling fans to bedrooms and living room
- Roller shutters to front windows for privacy and climate control
- Single carport under the main roof with roller door

The particulars contained herein are supplied for information only and shall not be taken as a representation in any respect on the part of the vendor or its agent. Interested parties should contact the nominated person or office for full and current details.

TYPE: For Sale

INTERNET ID: 80P4620

SALE DETAILS

\$559,000 - \$609,000

CONTACT DETAILS

Elders Real Estate Gawler

37 Murray Street

GAWLER, SA

08 8522 1988

RLA: 64256

Jackson Dare

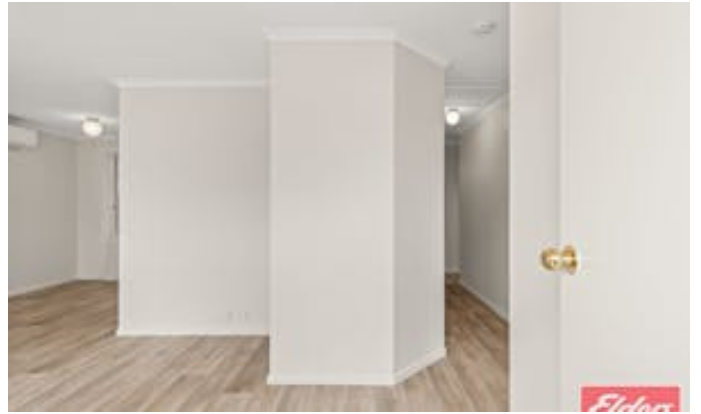
0423 771 611

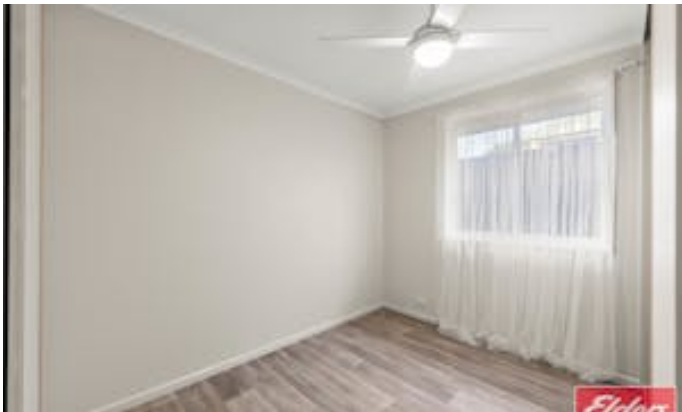
- Neat rear yard complete with 2 x garden sheds and a veggie garden
- Close to local facilities, schools, shops, and public transport
- Walking distance to Blakes Crossing and Munno Para shopping centers

A fantastic opportunity for families, first-home buyers, or investors alike.

All information contained herein is gathered from sources deemed to be reliable. However, we cannot guarantee its accuracy and interested persons should seek their own enquiries.

- Land Area 429.00 square metres
- Building Area: 104.00 square metres
- Bedrooms: 3
- Bathrooms: 1
- Single carport

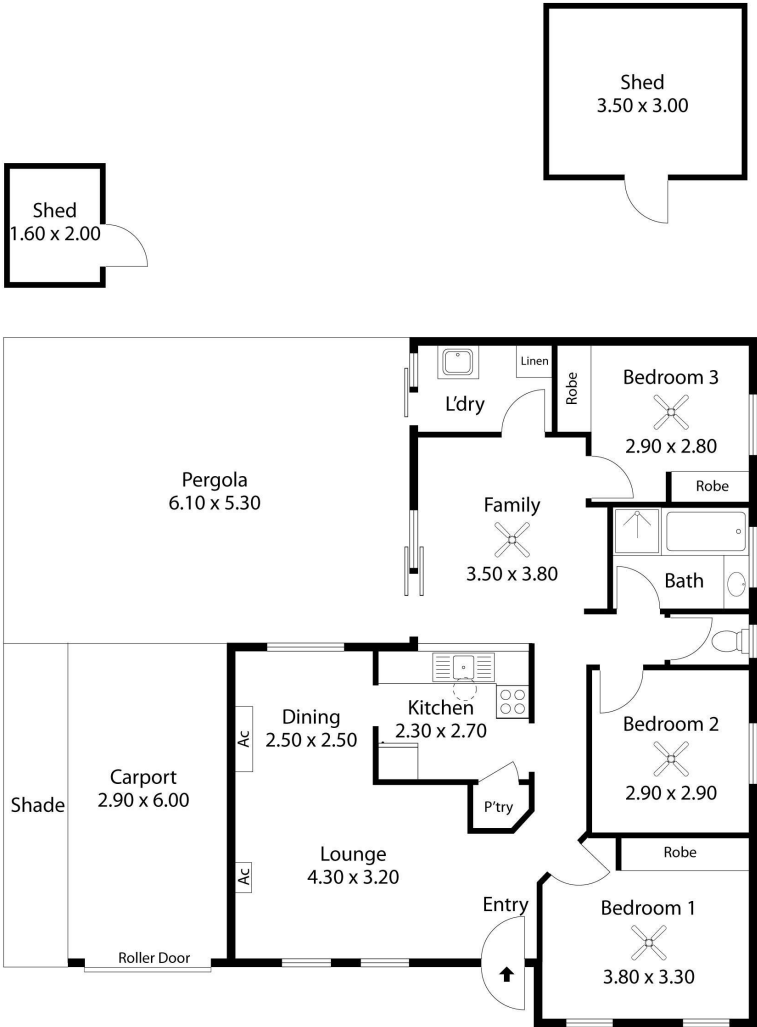








16 Elmwood Circuit,
BLAKEVIEW



Living:	104.00SQ.M
Pergola:	32.00SQ.M
Carport:	17.01SQ.M
Shed:	14.01SQ.M
TOTAL:	167.02SQ.M

This Drawing is for illustration purposes only. All measurements are internal and approximate. Details intended to be relied upon should be independently verified.