



46 Phillips Avenue, GAWLER EAST, SA 5118

5 BEDROOM HOME ON 1/2 ACRE

If you've been searching for a home with room to move and grow, this stunning property is sure to impress!

Set on a massive 2,000sqm block in one of Gawler East's most sought-after pockets, this beautifully presented, stone-fronted home combines space, comfort and flexibility for the modern family.

Inside this expansive home, you will find five generous bedrooms plus a study (or 6th bedroom â## perfect for guests or a home office). Multiple living zones including a formal lounge, formal dining, a huge open-plan family/meals area, plus an additional games/rumpus room for the kids or a retreat for teenagers.

There is a solid timber kitchen with walk-in pantry overlooking the main living space, making family time and entertaining effortless.

The home has ample storage with built-in cupboards throughout and comfort is guaranteed year-round with ducted gas heating, ducted cooling, a split system, and ceiling fans throughout.

The particulars contained herein are supplied for information only and shall not be taken as a representation in any respect on the part of the vendor or its agent. Interested parties should contact the nominated person or office for full and current details.

TYPE: For Sale

INTERNET ID: 80P4625

SALE DETAILS

\$990,000 - \$1,080,000

CONTACT DETAILS

Elders Real Estate Gawler

37 Murray Street

GAWLER, SA

08 8522 1988

RLA: 64256

Christopher Hurst

0412 897 020

Step outside and the lifestyle continues with a fantastic gabled outdoor entertaining area â## perfect for BBQs and family gatherings, the half-size tennis court provides endless fun and fitness and the established gardens create privacy and tranquility.

There is a handy garden shed and double garage with auto doors, plus extra space for a boat, caravan, or trailer.

All this, just moments from Springwood Shopping Centre, quality schools, walking trails and easy access to transport links.

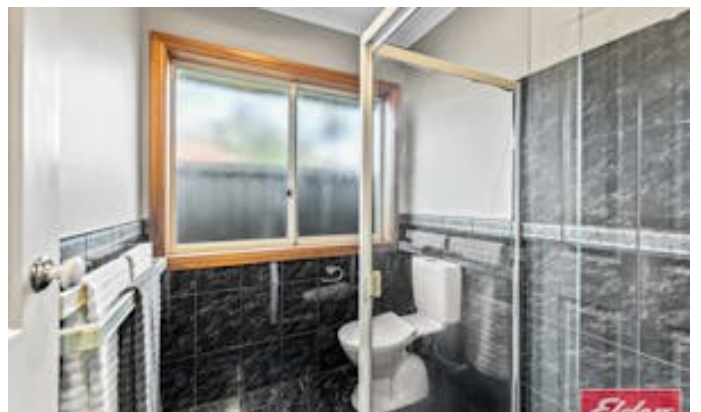
This property is a rare opportunity to secure space, comfort and convenience in a location everyone loves.

All information contained herein is gathered from sources deemed to be reliable. However, we cannot guarantee its accuracy and interested persons should seek their own enquiries.

Other features: Close to Schools

- Land Area 2,000.00 square metres
- Bedrooms: 5
- Bathrooms: 2
- Double garage

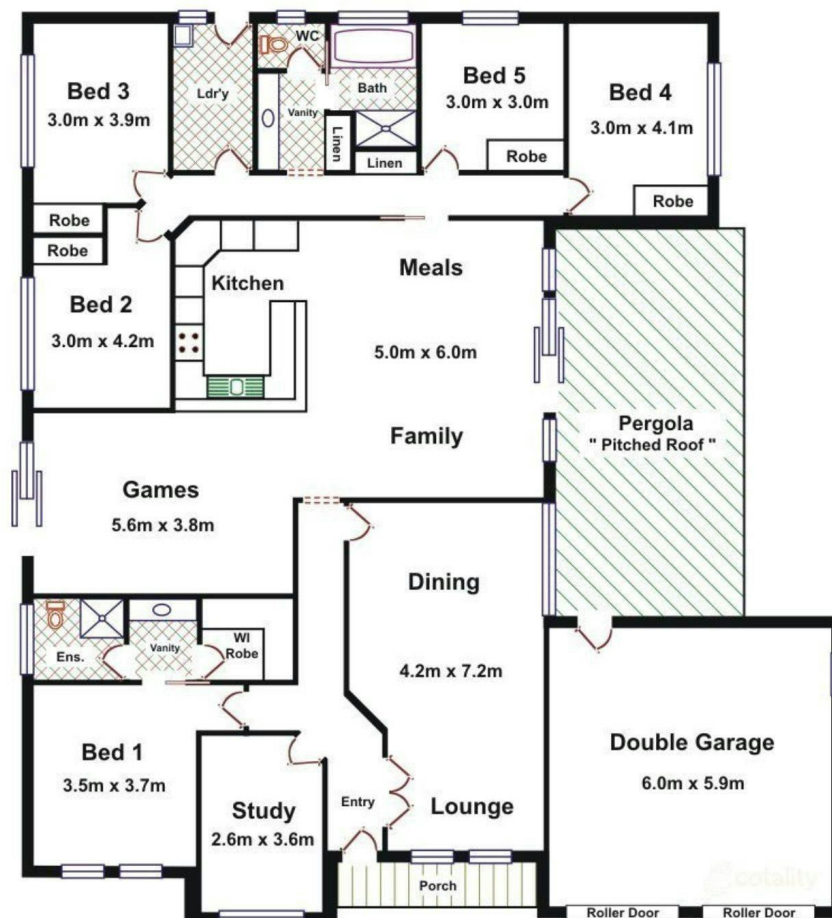








Area	M ²
Living	223.60
Garage	39.81
Porch	4.14
Total Approx	267.55



Please note: This drawing is for illustration purposes only. All measurements are approximate and details intended to be relied upon should be independently verified.

Elders