



152 Rosedale Road, SANDY CREEK, SA 5350

A CHARACTER FILLED COUNTRY ESTATE ON 115 ACRES

Please note: As we have received offers for this property, best and final offers will need to be submitted by 12pm Monday 13th of October.

"Tilshead" named by the original owners is positioned just minutes from Gawler and within easy reach of Adelaide and the northern suburbs, this remarkable circa 1915 stone homestead sits proudly on 115 acres of gently undulating farmland in sought-after Sandy Creek.

Overflowing with character and history, the home offers a rare opportunity to create a truly enviable country estate in one of South Australia's most beautiful regions, all just a short drive to the Barossa Valley.

This charming residence features four generously sized bedrooms, a wide central hallway, soaring high ceilings and multiple open fire places that reflect its timeless appeal. The expansive living room is warmed by a slow combustion heater, creating a cosy and welcoming space for family and guests alike. A country style eat-in kitchen, complete with a premium Falcon freestanding cooker, promises both function and atmosphere, making it a perfect space to gather, cook and enjoy the rural lifestyle.

TYPE: For Sale

INTERNET ID: 80P4632

SALE DETAILS

**\$1,500,000 -
\$1,650,000**

CONTACT DETAILS

Elders Real Estate Gawler
37 Murray Street
GAWLER, SA
08 8522 1988
RLA: 64256

Christopher Hurst
0412 897 020

While many upgrades have already been undertaken including a beautifully renovated central bathroom, there remains ample opportunity for you to add your personal finishing touches. Full wrap around verandahs frame the home, offering stunning views of the surrounding landscape and creating a seamless connection between indoor and outdoor living.

In addition to the main residence, the property boasts a two-story stone workers quarters or barn, which could be restored or reimagined as additional accommodation (STCC) or a studio. There's also a solid stone shed, an old dairy, a traditional sheering shed and numerous other outbuildings that speaks to the properties agricultural heritage. For the modern buyer, a near new 15m x 15m shed/workshop provides excellent storage or workspace for trades, machinery or hobbies.

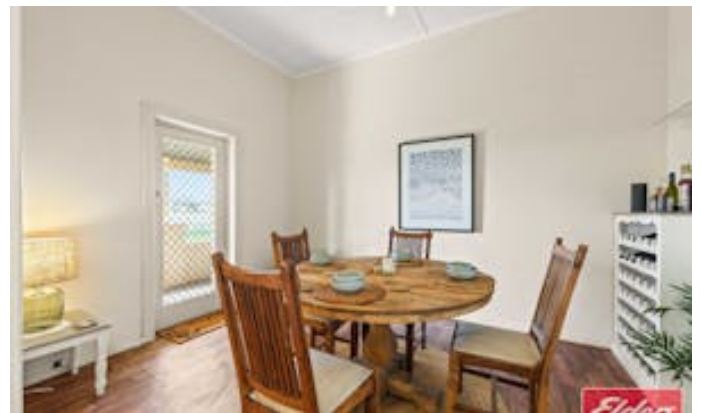
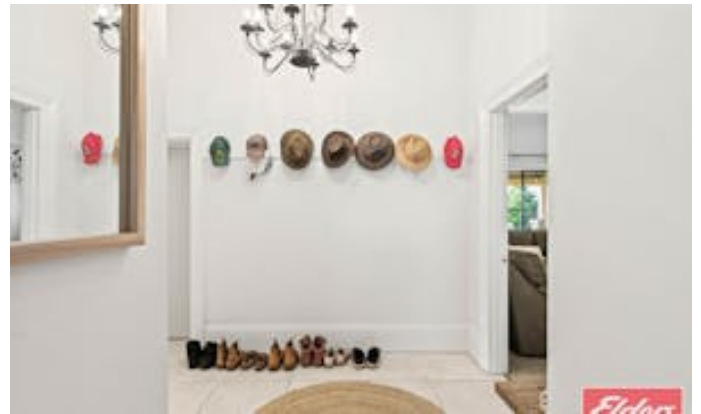
The land is currently cropped and well-suited to a variety of rural pursuits. Whether you're looking to run livestock, establish a vineyard, create a self sufficient lifestyle or simply enjoy the wide spaces, the possibilities are endless. The property also includes veggie patches, a chook run and plenty of room to expand into whatever rural dream you may have.

Located near the gateway to the Barossa and just moments from the local shops, schools and services, this property offers the best of both worlds - country living with convenience. With its blend of historical charm, modern upgrades and vast potential, this is a once in a lifetime opportunity to secure the lifestyle many can only dream of.

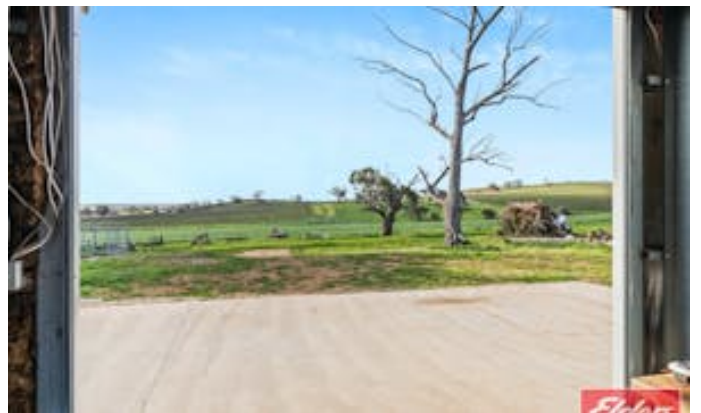
Ready to make an offer? Head to eldersgawler.com.au, select the property, and click the 'Make an Offer' tab to submit your offer online in just a few steps.

All information contained herein is gathered from sources deemed to be reliable. However, we cannot guarantee its accuracy and interested persons should seek their own enquiries.

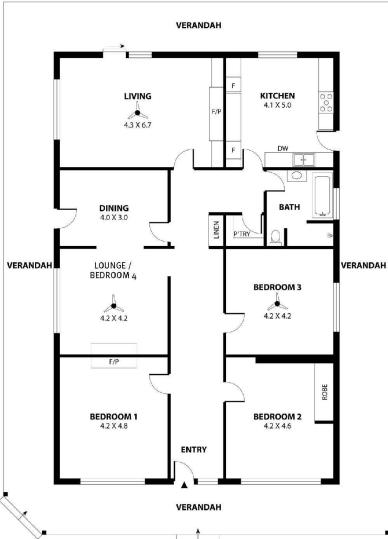
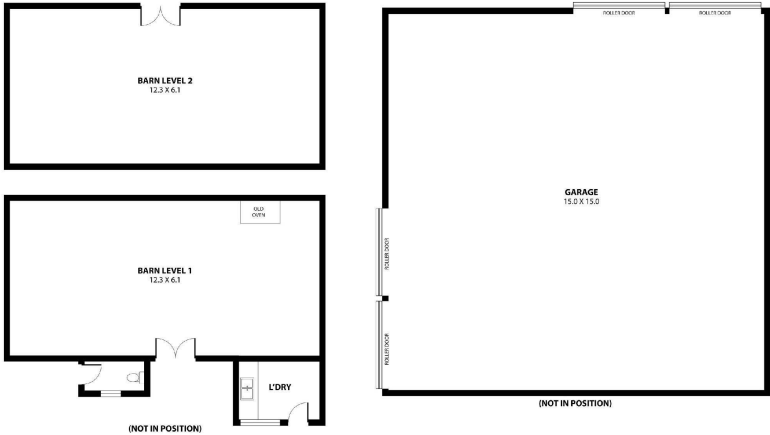
- Land Area 115 acres
- Bedrooms: 4
- Bathrooms: 1











600m ²	185m ²	128m ²	225m ²	162m ²
TOTAL	Living	Verandah	Garage	Barn



Scale in metres. This drawing is for illustration purposes only. All measurements are approximate and details intended to be relied upon should be independently verified.

