

## 61 Old Sarum Road, ELIZABETH NORTH, SA 5113

### NEAT THREE BEDROOM HOME ON SPACIOUS BLOCK!

PLEASE NOTE: Best and final offers will need to be submitted by 3pm Monday the 1st of September.

This freshly painted neat and tidy home is set on a large block and features three bedrooms, separate lounge room, large eat in kitchen and bathroom with a separate toilet.

Outside you will find a spacious enclosed rear yard with an undercover patio area, undercover carport and the added bonus of two sheds. Excellent opportunity for families, downsizers, or investors!

#### Property Features:

- Wood floors throughout
- Brand new split system reverse cycle unit to front lounge
- Freshly painted interior walls and woodwork

**TYPE:** For Sale

**INTERNET ID:** 80P4640

#### SALE DETAILS

**\$420,000 - \$449,000**

#### CONTACT DETAILS

**Elders Real Estate Gawler**

37 Murray Street

GAWLER, SA

08 8522 1988

RLA: 64256

**Jordan Dare**

0433 982 887

- Ceiling fans to bedrooms
- Undercover patio area to rear yard
- Enclosed rear yard with 2 sheds and single car carport.
- Shower over bath, exhaust fan and hand basin
- Separate laundry area with private toilet
- Potential rental return \$430-\$450 per week (approx)

Nicely situated within minutes of Munno Para Shopping Centre and just a short walk to public transport + local schools.

Contact Jordan Dare on 0433 982 887 to enquire on this ready to move in home!

Built - 1960

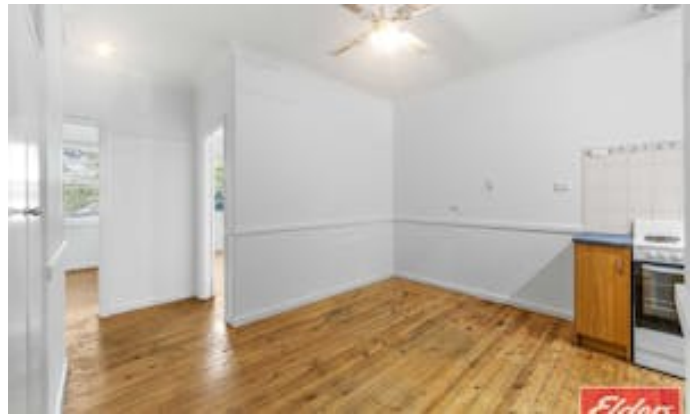
All information contained herein is gathered from sources deemed to be reliable. However, we cannot guarantee its accuracy and interested persons should seek their own enquiries.

Other features: Close to Schools, Close to Shops, Close to Transport, Heating

- Land Area 630.00 square metres
- Building Area: 80.00 square metres
- Bedrooms: 3
- Bathrooms: 1
- Single carport



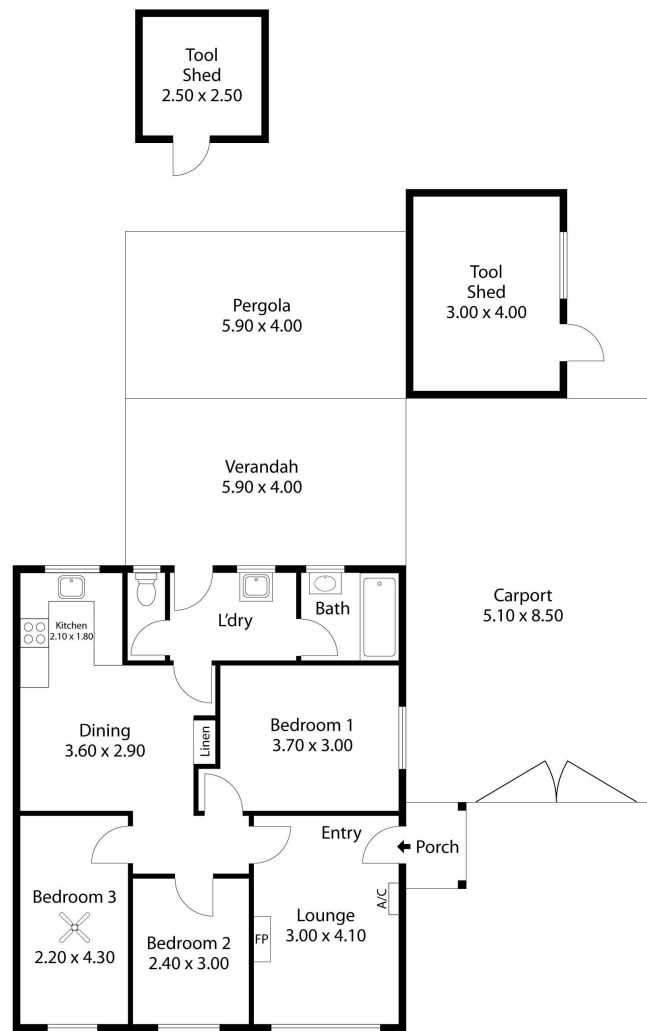








61 Old Sarum Road  
ELIZABETH NORTH



Living: 75.50SQ.M  
Porch: 2.30SQ.M  
Carport: 43.34SQ.M  
Shed: 18.25SQ.M  
Verandah: 23.60SQ.M  
Pergola: 23.60SQ.M

**TOTAL: 186.59SQ.M**



This Drawing is for illustration purposes only. All measurements are internal and approximate. Details intended to be relied upon should be independently verified.