



18 Croft Lane, EVANSTON GARDENS, SA 5116

LOW MAINTENANCE WITH COMFORT AND STYLE!

Fantastic opportunity to secure a quality-built four bedroom home offering comfortable living in the popular estate of Orleana Waters.

Built on a 250m² corner allotment with 150m² of internal living space, this double-storey residence boasts four generous bedrooms, two bathrooms, an additional guest toilet off the laundry and an automatic double carport.

Located directly opposite a quiet reserve with playground and seating, this home is ideal for families or investors. Enjoy close proximity to local shops, schools and transport, as well as easy access to main roads.

Property Features:

- Main bedroom with private ensuite and walk in robe
- Bedroom 2,3 and 4 with built in robes
- 5x Reverse Cycle Split Systems installed to house (each bedroom with 1x split

The particulars contained herein are supplied for information only and shall not be taken as a representation in any respect on the part of the vendor or its agent. Interested parties should contact the nominated person or office for full and current details.

TYPE: For Sale

INTERNET ID: 80P4641

SALE DETAILS

\$630,000 - \$675,000

CONTACT DETAILS

Elders Real Estate Gawler

37 Murray Street

GAWLER, SA

08 8522 1988

RLA: 64256

Jordan Dare

0433 982 887

system)

- 6.6kw solar system, 15x440watt and 1x5kW Goodwe 1-Phase Inverter
- Open plan kitchen/living area which overlooks rear yard
- Gas cook top
- Skylight to kitchen/living
- Dishwasher to kitchen
- Laundry with extra toilet and hand basin
- Main Bathroom with full-size bath tub
- Upstairs retreat area
- Double carport with automatic doors
- Enclosed rear yard, 1x rain water tank
- Potential rental return \$520-\$550 per week (approx)

Contact Jordan Dare on 0433 982 887 to enquire on this ready to move in home!

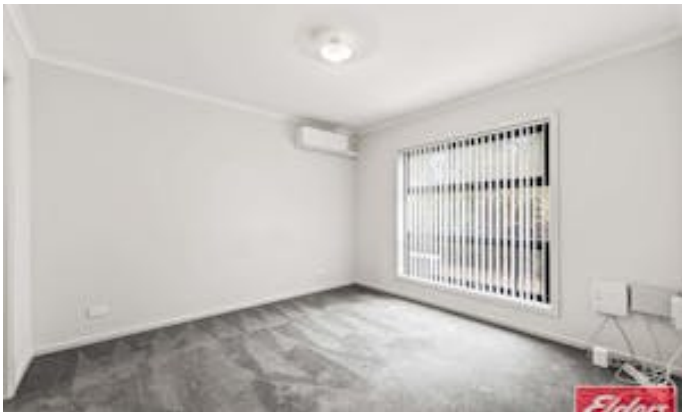
Built - 2013

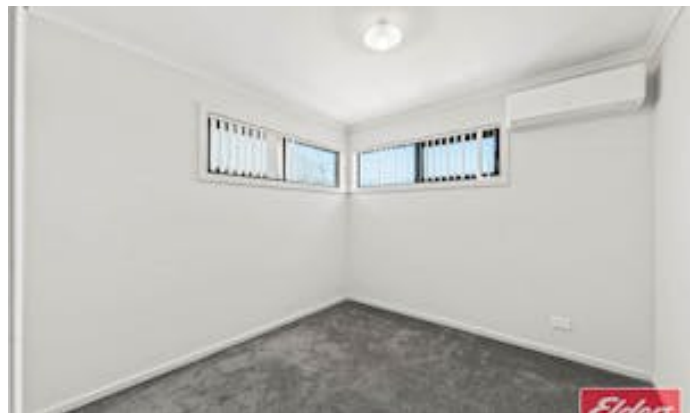
Council - Gawler

All information contained herein is gathered from sources deemed to be reliable. However, we cannot guarantee its accuracy and interested persons should seek their own enquiries.

Other features: Close to Schools, Close to Shops, Close to Transport

- Land Area 250.00 square metres
- Building Area: 150.00 square metres
- Bedrooms: 4
- Bathrooms: 2
- Double carport

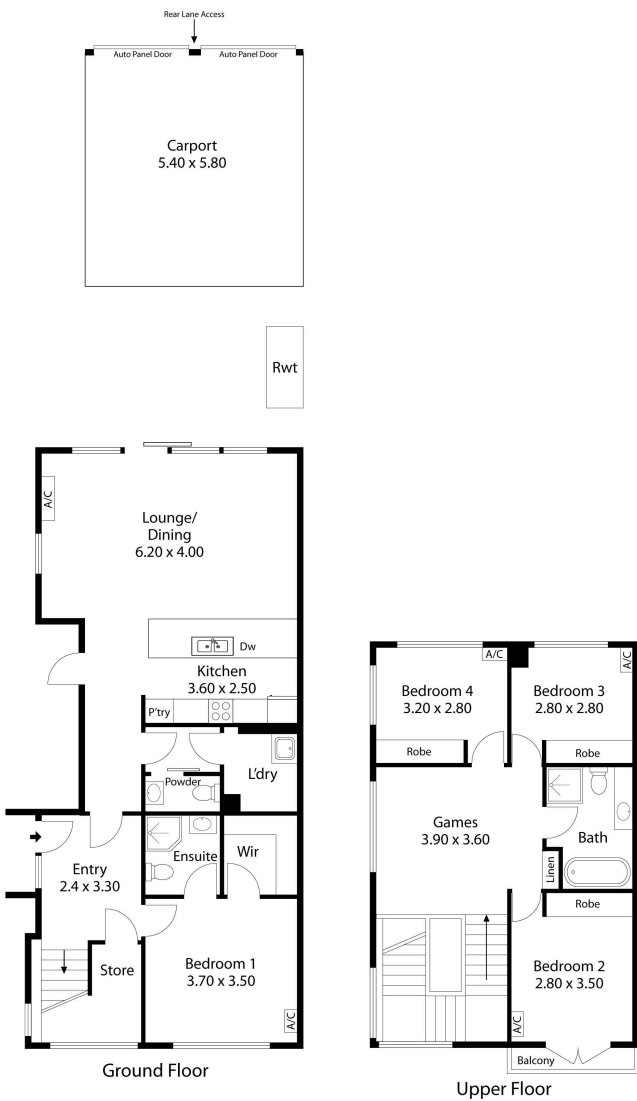








18 Croft Lane,
EVANSTON GARDENS



Living:	150.00SQ.M
Carport:	31.98SQ.M
Balcony:	2.00SQ.M
TOTAL:	183.98SQ.M



This Drawing is for illustration purposes only. All measurements are internal and approximate. Details intended to be relied upon should be independently verified.