



11 Murray Hillier Court, HILLIER, SA 5116

GREAT SIZE HOME, WITH SHEDS ON BIG BLOCK

This freshly painted 3 bedroom home has a living room, timber kitchen with an open plan dining area and the bathroom has been upgraded.

The home has features like timber floor boards, high ceilings, air conditioning, a slow combustion heater, lots of built in cupboards, a solar system, rainwater to the house, a second toilet and more.

Outside you will find lots of shedding, carports, workshop, toolshed, outdoor entertaining area and a lined games room all on a big 1/2 acre allotment in a very convenient location.

Close to schools, shops and enjoying easy access to the Northern Expressway.

INSPECTION IS EASY - If you are on our website www.eldersgawler.com.au or realestate.com.au press the BOOK AN INSPECTION button to select a day and time to register. Once registered, we can keep you updated about any changes or cancellations.

TYPE: For Rent

INTERNET ID: 80P4667

RENTAL DETAILS

Rent / Lease:

\$600 pw

CONTACT DETAILS

Elders Real Estate Gawler

37 Murray Street

GAWLER, SA

08 8522 1988

RLA: 64256

Jordan Dare

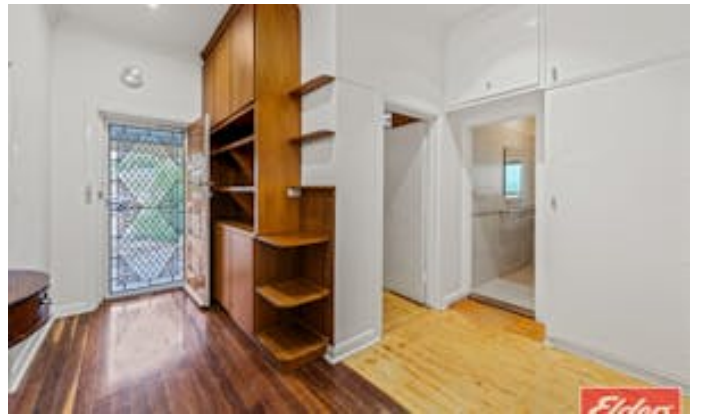
0433 982 887

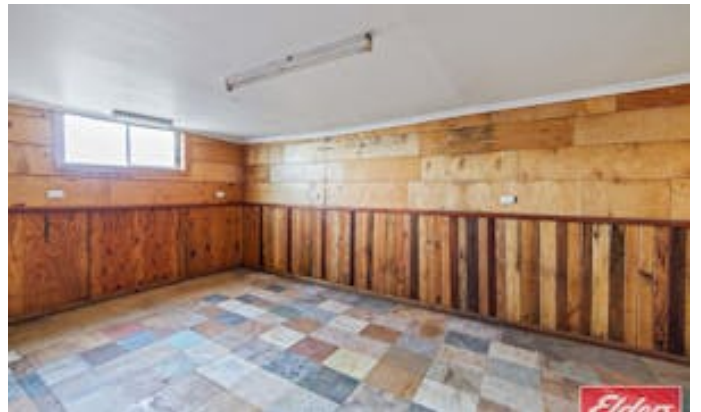
Please note, you do need to register for any open inspections. If no one registers for that time, then that inspection WILL NOT proceed. If there are no times set for this property, YOU MUST STILL register and as soon as times are set you will be advised of the inspection day and time.

All information contained herein is gathered from sources deemed to be reliable. However, we cannot guarantee its accuracy and interested persons should seek their own enquiries.

Other features: Close to Schools, Close to Shops, Combustion Heater

- This property is: Unfurnished
- Pets: No
- Available on: 08/09/25
- Land Area 2,032.00 square metres
- Bedrooms: 3
- Bathrooms: 1
- Double garage
- Double carport









11 Murray Hillier Court,
HILLIER



Living:	127.85Q.M
Porch:	17.45Q.M
Carport:	15.05Q.M
Pergola:	34.65Q.M
Verandah:	17.65Q.M
Shed/Store:	202.15Q.M
Garage:	17.65Q.M
TOTAL:	432.15Q.M



This Drawing is for illustration purposes only. All measurements are internal and approximate. Details intended to be relied upon should be independently verified.