

17 Adelaide Road, MALLALA, SA 5502

CIRCA 1955 RENOVATED STUNNER!

Situated in the heart of the growing yet charming township of Mallala and enjoying a short walk to shops, schools and more this property is very impressive.

The 1955 built home is a real eye catcher with its attractive facade and return verandah.

The home has been tastefully renovated and has three bedrooms (or the option for a fourth), there is a lounge room, a lovely open plan meals and living area as well as a beautiful kitchen complete with an island bench, stone bench tops plus a huge walk in butlers pantry.

The main bedroom has an ensuite and walk in robe and there is a rear sunroom/tv room. Some of the many features of the home include: high ceilings, polished timber floors, freshly painted interior, reverse cycle ducted air conditioning, a huge solar system and 45,000 litres of rainwater to the home.

Outside you will find a fantastic gable roof, decked outdoor entertaining area complete with cafe blinds, there is a very handy free standing lined room that could be great for

The particulars contained herein are supplied for information only and shall not be taken as a representation in any respect on the part of the vendor or its agent. Interested parties should contact the nominated person or office for full and current details.

TYPE: For Sale

INTERNET ID: 80P4670

SALE DETAILS

\$749,000 - \$799,000

CONTACT DETAILS

Elders Real Estate Gawler

37 Murray Street

GAWLER, SA

08 8522 1988

RLA: 64256

Christopher Hurst

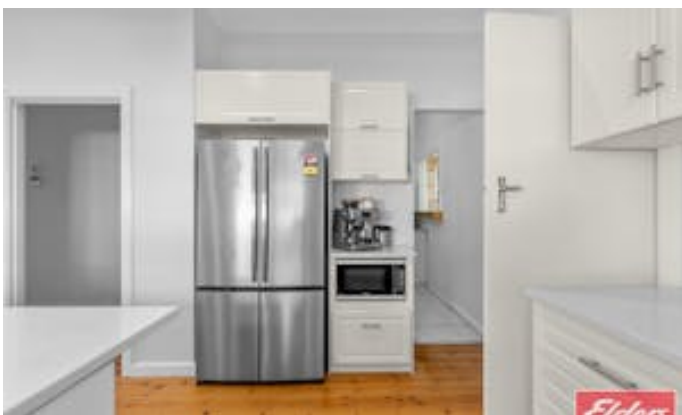
0412 897 020

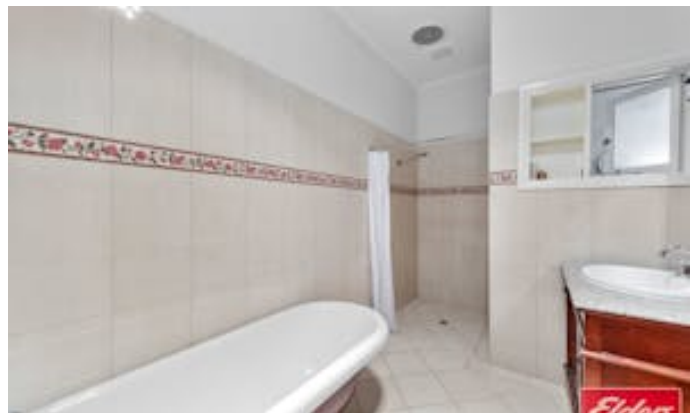
the teenagers or a hobby room. Plus you will find a large carport that could house 3 vehicles and beautifully established gardens all on a huge 970sqm allotment.

All information contained herein is gathered from sources deemed to be reliable. However, we cannot guarantee its accuracy and interested persons should seek their own enquiries.

Other features: Close to Schools, Close to Shops

- Land Area 970.00 square metres
- Bedrooms: 3
- Bathrooms: 2
- Single garage
- 3 car carport
- Ensuite

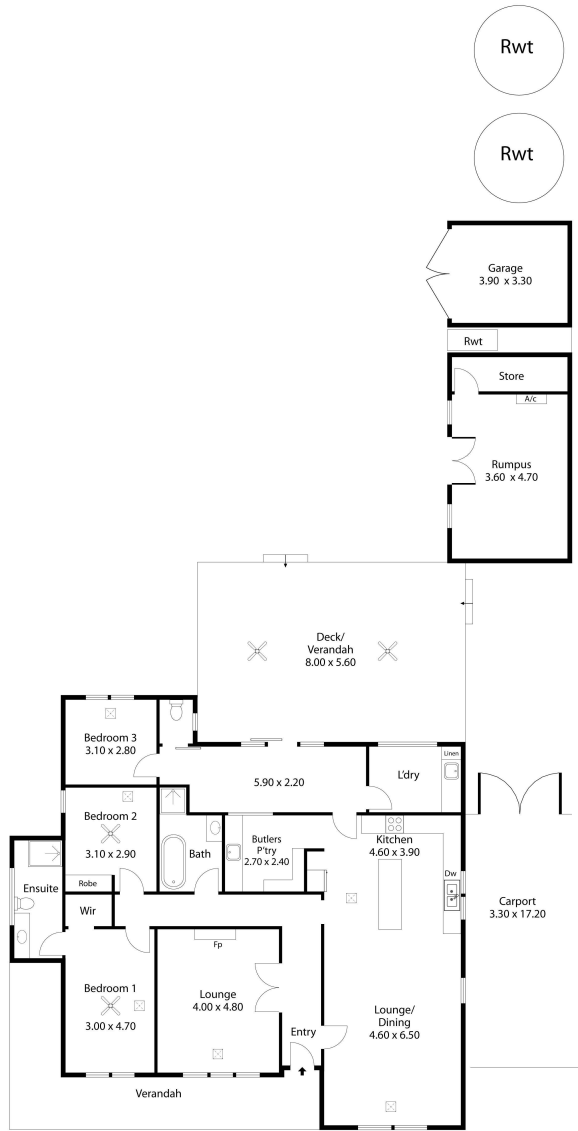








17 Adelaide Road,
MALLALA



Living:	166.42SQ.M
Verandah:	69.60SQ.M
Carport:	56.75SQ.M
Garage:	12.87SQ.M
Rumpus:	16.92SQ.M
TOTAL:	322.56SQ.M

This Drawing is for illustration purposes only. All measurements are internal and approximate. Details intended to be relied upon should be independently verified.