



32/8-18 Santo Parade, PORT ADELAIDE, SA 5015

Brand New Premium Warehouse - 1837 Business Park

Position your business for success in the highly sought-after 1837 Business Park, a premier destination offering exceptional exposure and a state-of-the-art warehouse and office complex.

This brand-new facility features a spacious warehouse and three levels of professional office accommodation. Be the first to occupy this premium property and make it your own.

Features:

- Brand new warehouse with office complex over 3 levels
- 284 sqm* of building area
- High clearance roller door
- Internal clearance of 11.5m*
- Excellent access and high exposure to Port River Expressway

TYPE: For Lease

INTERNET ID: 80P4678

RENTAL DETAILS

Rent / Lease:

Expressions of interest

CONTACT DETAILS

Elders Real Estate Gawler

37 Murray Street

GAWLER, SA

08 8522 1988

RLA: 64256

Jackson Dare

0423 771 611

- 3-phase power with 100amps supply

For further details please contact Jackson Dare 0423 771 611.

All information contained herein is gathered from sources deemed to be reliable. However, we cannot guarantee its accuracy and interested persons should seek their own enquiries. Some images are for illustrative purposes only.

*approximately

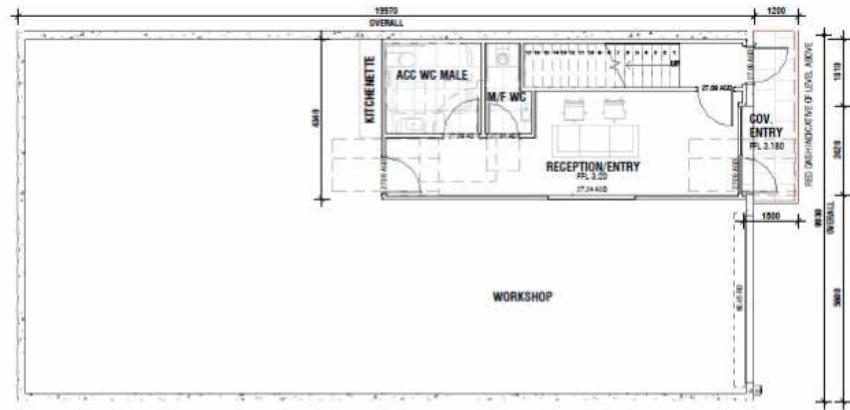
- Commercial Type:
- Building Area: 284.00 square metres





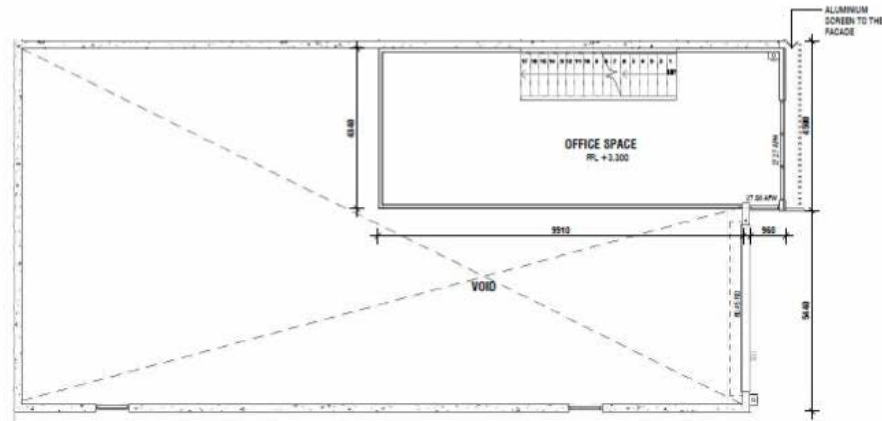


TYPE 1 (1-9)



GROUND FLOOR PLAN

SCALE: 1:100



FIRST & SECOND FLOOR PLAN

SCALE: 1:100