



22 Redbanks Road, MALLALA, SA 5502

UNDER CONTRACT BY JORDAN DARE.

Great Size Block, Neat and Fresh Home!

Welcome to 22 Redbanks Road, Mallala - Freshly painted, this three bedroom home sits on a near 1,000sqm (approx) allotment with plenty of room to move!

Offering the perfect combination of comfort and country charm, this is an ideal home for couples, families or investors looking to embrace a country life-style.

Inside you will find a spacious lounge room with a split system and a slow combustion heater, separate kitchen/dining area, 3 bedrooms and a main bathroom with a separate toilet.

The front and backyard offer garden beds and plenty of shade cover to enjoy, with an undercover patio included. Plus the bonus of bird cages and a section for your chickens!

Local shops, schools, and parks just minutes away, 22 Redbanks Road offers

The particulars contained herein are supplied for information only and shall not be taken as a representation in any respect on the part of the vendor or its agent. Interested parties should contact the nominated person or office for full and current details.

TYPE: For Sale

INTERNET ID: 80P4685

SALE DETAILS

\$440,000 - \$479,000

CONTACT DETAILS

Elders Real Estate Gawler

37 Murray Street

GAWLER, SA

08 8522 1988

RLA: 64256

Jordan Dare

0433 982 887

convenient living all in a relaxed location.

Property Features:

- Main bedroom with built in robe
- 2nd and 3rd bedrooms
- Brand new carpet throughout interior
- Freshly painted interior
- Reverse cycle split system to lounge
- Brand new electric oven/stove
- Exterior roller shutters to front windows
- Shed to rear yard with power
- Bird cages to rear yard
- Walking distance to Mallala shops
- Under an hour to Adelaide CBD
- Potential rental income \$470 per week

Year Built | 1977

Land Size | 997 m²

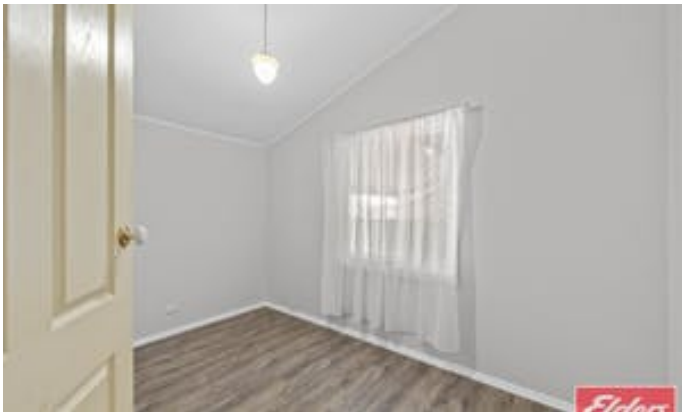
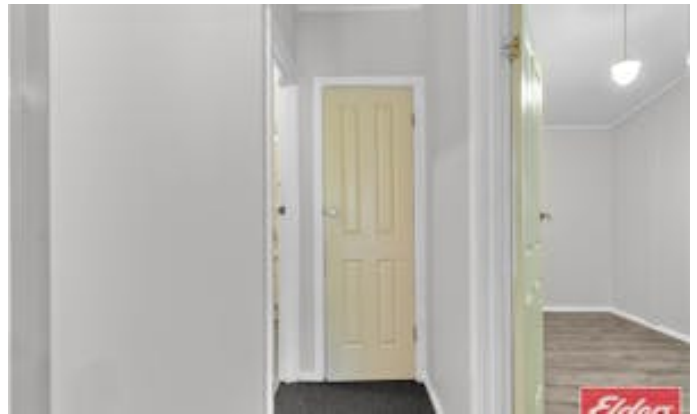
Local Council | Adelaide Plains Council

All information contained herein is gathered from sources deemed to be reliable. However, we cannot guarantee its accuracy and interested persons should seek their own enquiries.

Other features: Close to Schools, Close to Shops, Combustion Heater, Heating

- Land Area 997.00 square metres
- Bedrooms: 3
- Bathrooms: 1
- Single carport











303m ²	95m ²	26m ²	72m ²	44m ²	42m ²	24m ²
TOTAL	Living	Porch	Carport	Verandah	Shed	Chicken Yard



Scale in metres. This drawing is for illustration purposes only. All measurements are approximate and details intended to be relied upon should be independently verified.