



## 32 Bacton Street, EVANSTON, SA 5116

### Very Well Established

Located close to schools, shops, public transport, reserves and more this very well established property has lots to offer.

The solid brick 3 bedroom semi detached home has a lounge room, open plan kitchen/meals area, plus a huge enclosed rear family/living area.

The home also has a separate free standing room that could be used as a study or an additional bedroom. Some of this homes many features include: ducted evaporative air conditioning, gas heating, a reverse cycle air conditioner, high ceilings, polished timber floors, upgraded bathroom, lots of built in cupboards, security roller shutters, an 8 panel solar system and more.

Outside you will find a front verandah, a huge carport to house multiple vehicles and allows access through to a large shed all on a fully established easy care 587sqm allotment.

Please note: The property will not be open for inspection prior to the first open inspection on Tuesday 21st of April at 4:45pm - 5:15pm.

The particulars contained herein are supplied for information only and shall not be taken as a representation in any respect on the part of the vendor or its agent. Interested parties should contact the nominated person or office for full and current details.

**TYPE:** For Sale

**INTERNET ID:** 80P4693

**SALE DETAILS**

**\$495,000 - \$535,000**

**CONTACT DETAILS**

**Elders Real Estate Gawler**

37 Murray Street

GAWLER, SA

08 8522 1988

RLA: 64256

**Christopher Hurst**

0412 897 020

Ready to make an offer? Head to [eldersgawler.com.au](http://eldersgawler.com.au), select the property, and click the 'Make an Offer' tab to submit your offer online in just a few steps.

All information contained herein is gathered from sources deemed to be reliable. However, we cannot guarantee its accuracy and interested persons should seek their own enquiries.

- Land Area 587.00 square metres
- Bedrooms: 3
- Bathrooms: 1
- Single garage
- 3 car carport

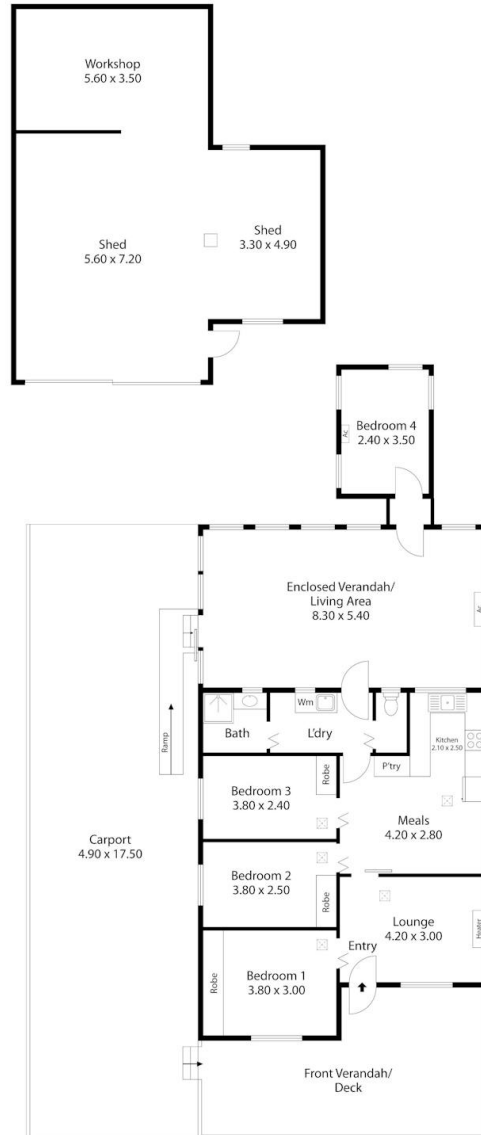








32 Bacton Street,  
**EVANSTON**



Living: 128.55SQ.M  
 Verandah/Deck: 30.00SQ.M  
 Carport: 96.90SQ.M  
 Shed/Workshop: 78.70SQ.M

**TOTAL: 334.15SQ.M**



This Drawing is for illustration purposes only. All measurements are internal and approximate. Details intended to be relied upon should be independently verified.