



41A Gawler Terrace, GAWLER SOUTH, SA 5118

Ultra Modern Home on 2132sqm with Spectacular Views in a Private Location.

Please note: Best and final offers for this property will need to be submitted by 12pm Monday 13th of October.

This 2021 Distinctive Homes-built 3-bedroom home features high ceilings throughout and offers outstanding views from all living areas, overlooking the Gawler racecourse and surrounding landscapes. Enjoy a front-row seat to nature's finest displays, from lightning storms rolling across the horizon to breathtaking sunsets that paint the sky.

The bright and airy home features a large lounge with open fireplace, a large dining room and a dream kitchen with caesar stone bench tops, large central island bench, 900 Gas cooktop, dishwasher and a large walk in butlers pantry.

The large master bedroom also takes in the view and features a big walk in robe and big ensuite bathroom and the other two bedroom are a good size.

There is a sparkling main bathroom with bath and a large laundry. Year round comfort is provided by ducted reverse cycle air conditioning and the open fireplace is great for those winter weekends. An approx. 5 kwatt solar electric system reduces those energy

The particulars contained herein are supplied for information only and shall not be taken as a representation in any respect on the part of the vendor or its agent. Interested parties should contact the nominated person or office for full and current details.

TYPE: For Sale

INTERNET ID: 80P4696

SALE DETAILS

\$899,000 - \$949,000

CONTACT DETAILS

Elders Real Estate Gawler

37 Murray Street

GAWLER, SA

08 8522 1988

RLA: 64256

Jeff Lind

0413 186 214

bills.

With a professionally designed permaculture garden featuring fruit trees, vegetable beds, swales for water retention, and natives to enhance soil stability and provide natural windbreaks. This self-sustaining ecosystem supports year-round productivity. Beyond the garden, the spacious yard is a blank canvas-providing ample room for a shed, caravan or boat parking, an inviting outdoor living area, additional fruit trees, and plenty of space for the kids or grandkids to play.

The property is perfectly suited to retirees, executive couples or families wanting room to move in a great location. So if your looking for that special property in a great location where you can add the finishing touches to suit you then this is a must view property.

For details or to inspect please call Jeff Lind on 0413186214

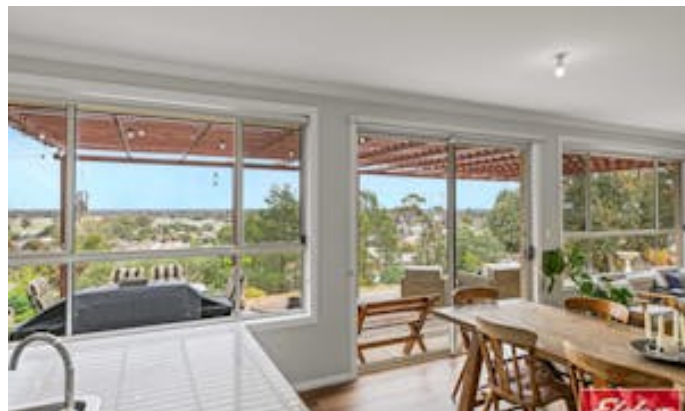
Ready to make an offer? Head to eldersgawler.com.au, select the property, and click the 'Make an Offer' tab to submit your offer online in just a few steps.

All information contained herein is gathered from sources deemed to be reliable. However, we cannot guarantee its accuracy and interested persons should seek their own enquiries.

- Land Area 2,132.00 square metres
- Bedrooms: 3
- Bathrooms: 2

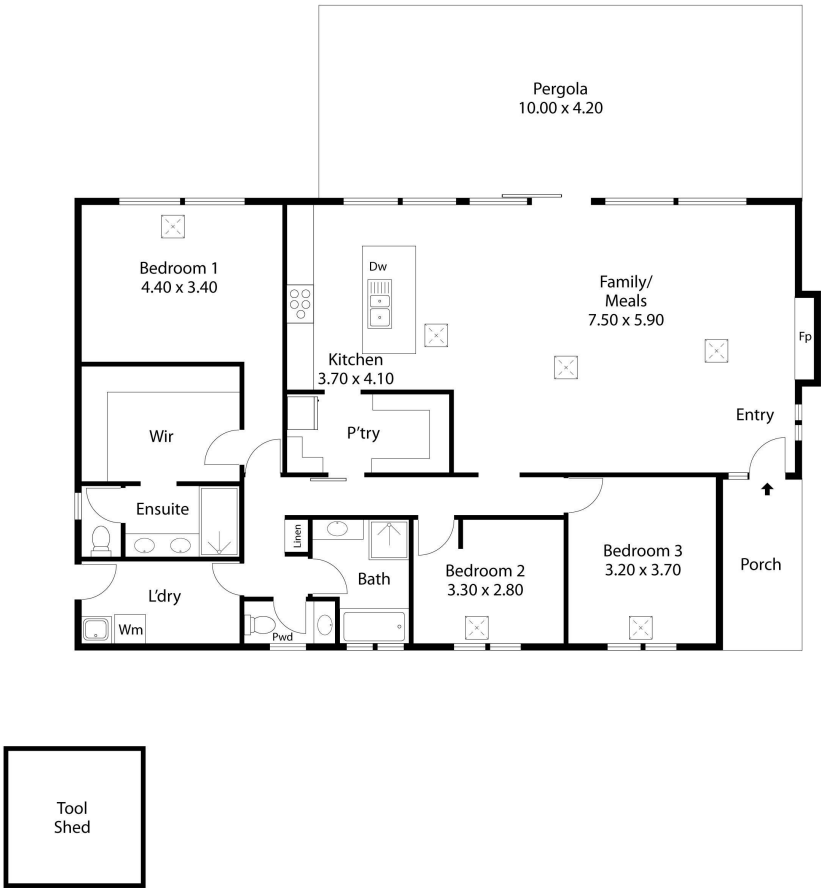








41A Gawler Terrace,
GAWLER SOUTH



Living:	146.32SQ.M
Verandah:	42.00SQ.M
Porch:	6.69SQ.M
TOTAL:	195.01SQ.M



This Drawing is for illustration purposes only. All measurements are internal and approximate. Details intended to be relied upon should be independently verified.