



24 Filsell Road, LYNDOCH, SA 5351

Lots Here On Just Under 1.5 Acres

Please note: Best and final offers will need to be submitted by 12pm Tuesday 20th of January.

Set in the very popular township of Lyndoch just 10 minutes from Gawler and on the edge of the Barossa Valley this very well established property is set on a huge 5622sqm allotment.

The home has 5 bedrooms, 2 bathrooms, 3 living areas including a kitchenette that would be great for those looking for dual living, the kids or grandparents!

The home has an updated kitchen and bathroom as well as features like lots of built in cupboards, ducted evaporative air conditioning, a slow combustion heater, 3kw solar system, rain water to the home and the home has been freshly painted.

Outside is very well established with a lovely decked outdoor entertaining area, lots of chook sheds, a dome shade house, carports, a large shed that has been converted into a studio/games room complete with a bathroom, heater and workshop.

TYPE: For Sale

INTERNET ID: 80P4701

SALE DETAILS

\$695,000 - \$750,000

CONTACT DETAILS

Elders Real Estate Gawler

37 Murray Street

GAWLER, SA

08 8522 1988

RLA: 64256

Christopher Hurst

0412 897 020

The garden has been well established offering prospective purchasers some space and room to move in a great location!

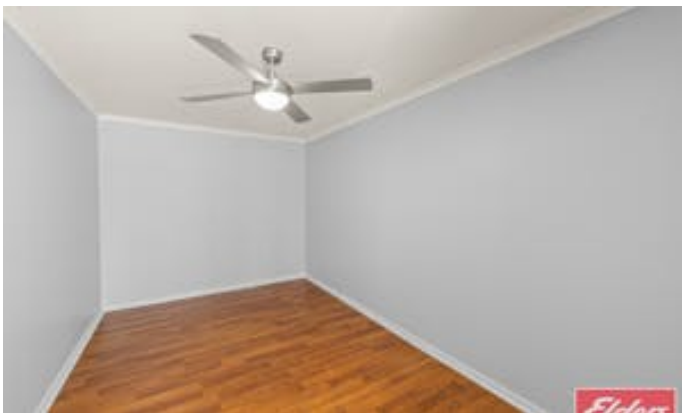
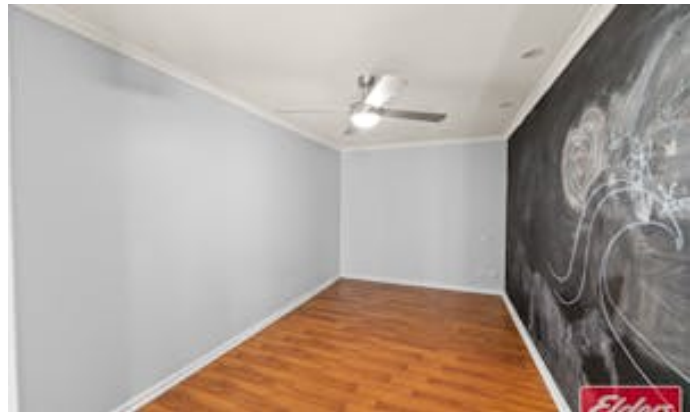
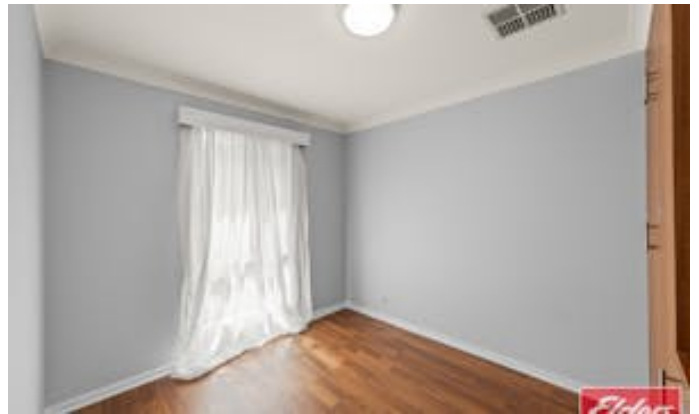
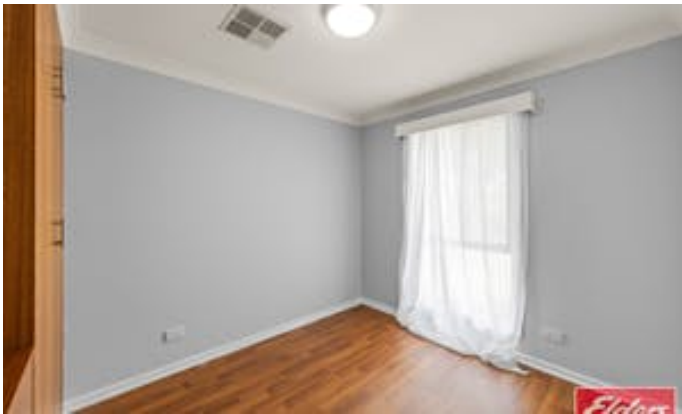
PLEASE NOTE: This property will be having a second open inspection on Saturday 17th of January at a time to be advised.

Ready to make an offer? Head to eldersgawler.com.au, select the property, and click the 'Make an Offer' tab to submit your offer online in just a few steps.

All information contained herein is gathered from sources deemed to be reliable. However, we cannot guarantee its accuracy and interested persons should seek their own enquiries.

- Land Area 5,622.00 square metres
- Bedrooms: 5
- Bathrooms: 3
- Single garage
- Single carport









24 Filsell Road ,
LYNDOCH



Living:	235.43SQ.M
Studio:	111.27SQ.M
Alfresco:	57.84SQ.M
Verandah:	30.45SQ.M
TOTAL:	434.99SQ.M

This Drawing is for illustration purposes only. All measurements are internal and approximate. Details intended to be relied upon should be independently verified.