



## 11 Leske Street, FREELING, SA 5372

### Affordable Country Living / Large Allotment

This 3 bedroom cottage is no oil painting but gives the purchaser the opportunity to own a comfortable home on a large 986sqm approx. corner allotment with a large shed and plenty of room for fruit trees and vegetable gardens at an affordable price.

The home features a large kitchen with plenty of cupboards and bench space, an electric oven and the fridge is included. Adjoining the kitchen is an open plan dining room and lounge with split system air conditioner. Bedroom 1 and bedroom 2 both have wardrobes, there is a bathroom with shower and bath, laundry, a third bedroom and a sunroom.

There is an outdoor living area, large fernery, fixed raised garden beds, two garden sheds and the large main shed/workshop.

The property offers quiet country living in the popular country township of Freeling which offers a variety of services including the local supermarket, local hotels and coffee shop.

So if you have been looking for quiet and affordable country living then this is the one

The particulars contained herein are supplied for information only and shall not be taken as a representation in any respect on the part of the vendor or its agent. Interested parties should contact the nominated person or office for full and current details.

**TYPE:** For Sale

**INTERNET ID:** 80P4752

#### SALE DETAILS

**\$449,000 - \$493,000**

#### CONTACT DETAILS

**Elders Real Estate Gawler**

37 Murray Street

GAWLER, SA

08 8522 1988

RLA: 64256

**Jeff Lind**

0413 186 214

for you.

Please note: Best and final offers will need to be submitted by 12pm Wednesday 18th of February.

For details or to inspect please call Jeff Lind on 0413186214.

Ready to make an offer? Head to [eldersgawler.com.au](http://eldersgawler.com.au), select the property, and click the 'Make an Offer' tab to submit your offer online in just a few steps.

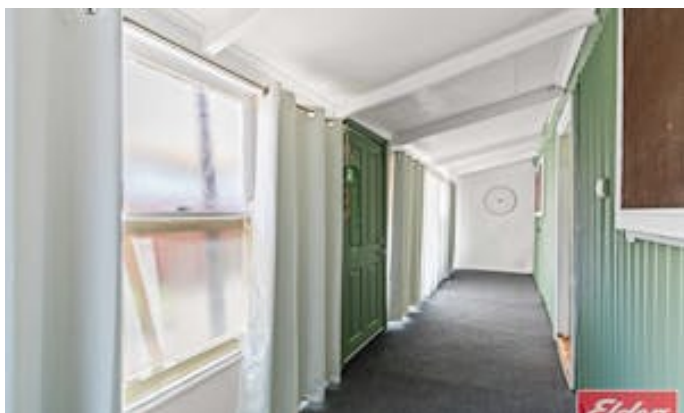
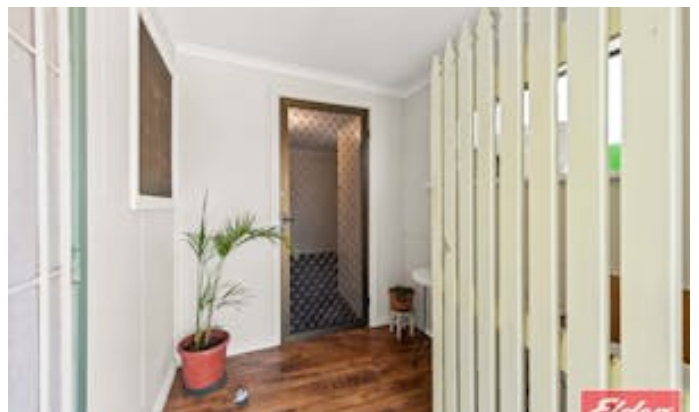
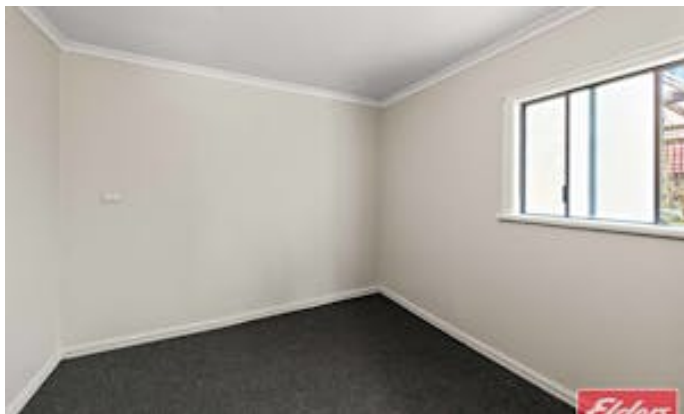
All information contained herein is gathered from sources deemed to be reliable. However, we cannot guarantee its accuracy and interested persons should seek their own enquiries.

- Land Area 986.00 square metres
- Bedrooms: 3
- Bathrooms: 1





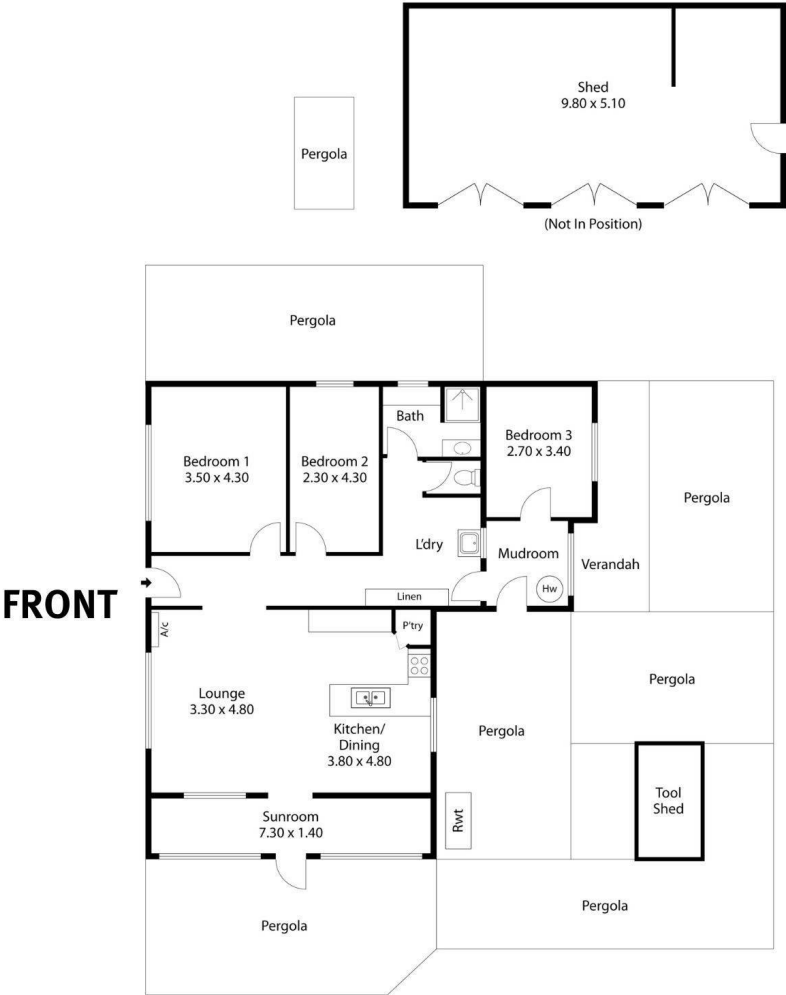








11 Leske Street,  
**FREELING**



Living: 112.97SQ.M  
Verandah: 9.59SQ.M  
Pergola: 148.06SQ.M  
Shed: 55.32SQ.M

**TOTAL: 325.94SQ.M**



This Drawing is for illustration purposes only. All measurements are internal and approximate. Details intended to be relied upon should be independently verified.