

## 24 Cameron Terrace, MALLALA, SA 5502

### Family Living with Shed and Room to Move

Set in the heart of Mallala is this well-maintained four bedroom family home on a large 1,202sqm allotment offering space and practicality both inside and out.

The home features 4 bedrooms with the master bedroom complete with a walk-in robe and ensuite, a separate lounge, and an open plan family and meals area adjoining the kitchen.

There is plenty of built in storage, neutral tonings throughout and comfort is assured year-round with ducted reverse cycle air conditioning, while a substantial 10.5kW solar system helps to keep energy costs down.

Outside is where this property truly shines. Enjoy entertaining in all seasons under the verandah fitted with zip-track blinds. The garden is neat and established with fruit trees and a small fenced yard, ideal for the chooks.

Vehicle accommodation is abundant with a double garage, plus a large side pitched-roof carport offering drive-through side access to the large shed complete with power and concrete flooring, perfect for those needing somewhere to store extra

**TYPE:** For Sale

**INTERNET ID:** 80P4775

#### **SALE DETAILS**

**\$750,000 - \$790,000**

#### **CONTACT DETAILS**

**Elders Real Estate Gawler**

37 Murray Street

GAWLER, SA

08 8522 1988

RLA: 64256

**Elysa Hunter**

0426 622 100

The particulars contained herein are supplied for information only and shall not be taken as a representation in any respect on the part of the vendor or its agent. Interested parties should contact the nominated person or office for full and current details.

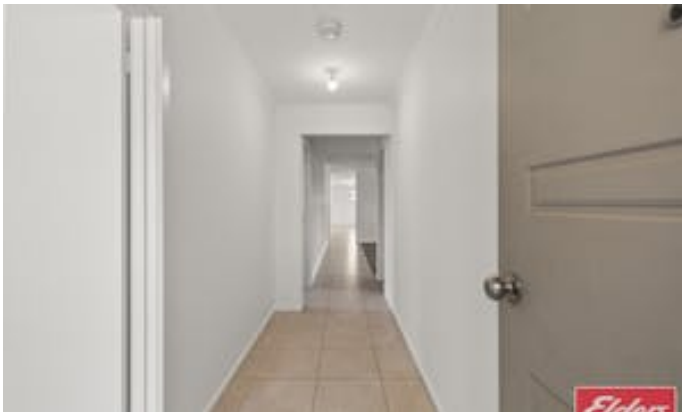
vehicles, the boat or caravan.

Offering space, functionality and lifestyle in one complete package, this is an outstanding opportunity for families, entertainers or those seeking room to move.

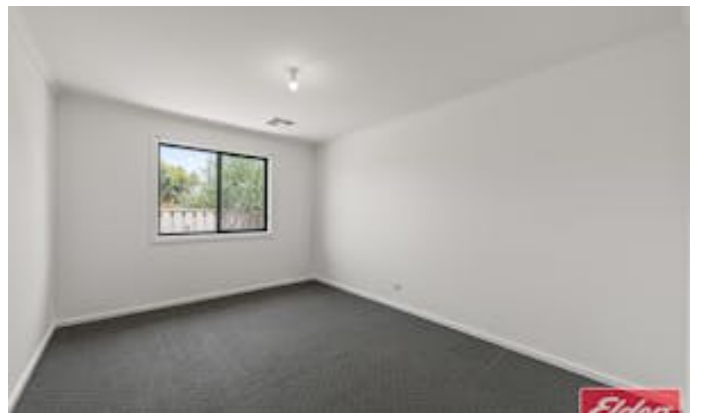
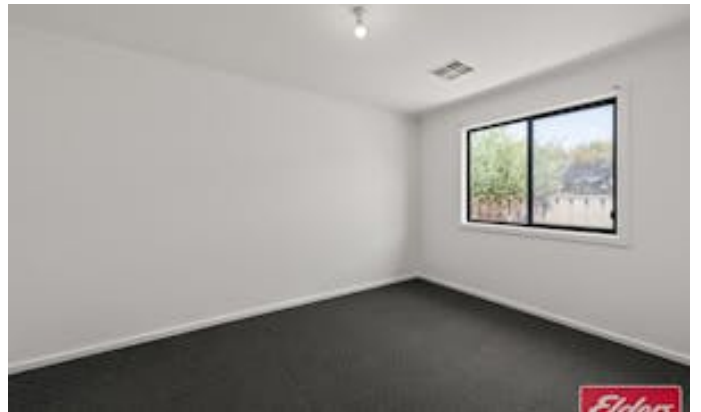
Ready to make an offer? Head to [eldersgawler.com.au](http://eldersgawler.com.au), select the property, and click the 'Make an Offer' tab to submit your offer online in just a few steps.

All information contained herein is gathered from sources deemed to be reliable. However, we cannot guarantee its accuracy and interested persons should seek their own enquiries.

- Land Area 1,202.00 square metre
- Bedrooms: 4
- Bathrooms: 2
- Double garage
- Double carport











24 Cameron Terrace,  
**MALLALA**



Living:	161.54SQ.M
Garage:	33.06SQ.M
Verandah:	136.23SQ.M
Porch:	3.42SQ.M
Shed:	72.00SQ.M
<b>TOTAL:</b>	<b>406.25SQ.M</b>



This Drawing is for illustration purposes only. All measurements are internal and approximate. Details intended to be relied upon should be independently verified.