



3322 Main North Road, EVANSTON SOUTH, SA 5116

Prominent Location on 2869sqm

Situated in a very prominent and handy location on the Main North Road just out of Gawler as you head to Adelaide, close to Trinity College and lots of services this property offers you lots of potential.

The beautifully renovated 1930's stone home features 3 large bedrooms, a large living room, plus a new kitchen overlooking a second living/dining area. Recent upgrades include fresh paint throughout, new flooring, an upgraded bathroom, air conditioner, while retaining character features like a large central hallway, high ceilings and more.

Outside you will find front and rear verandahs, a semi-lined shed with an old kitchen and wood stove, plus a large carport / shedding.

Set on just under three-quarters of an acre (2,869 sqm), this substantial allotment provides space and versatility in a fast-developing location.

Please note: We are still waiting to arrange the first open inspection, if you would like to see through the property send us an email and we will advise the time once confirmed.

TYPE: For Sale

INTERNET ID: 80P4791

SALE DETAILS

\$800,000 - \$880,000

CONTACT DETAILS

Elders Real Estate Gawler

37 Murray Street

GAWLER, SA

08 8522 1988

RLA: 64256

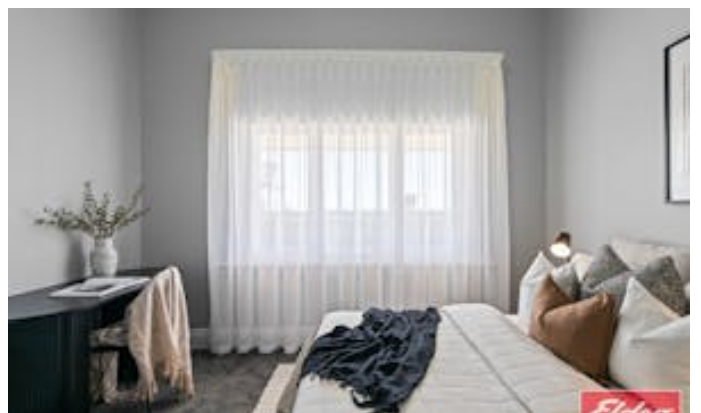
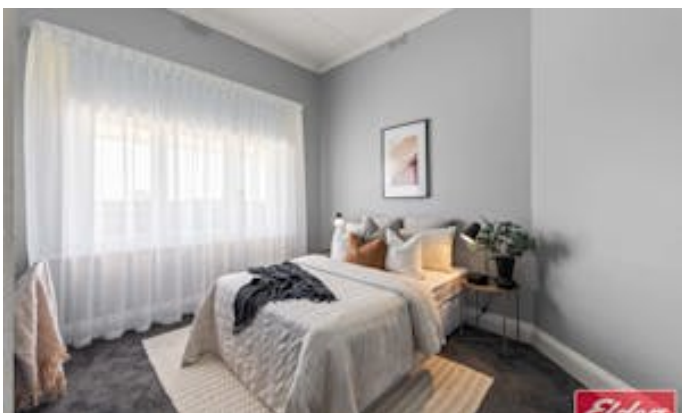
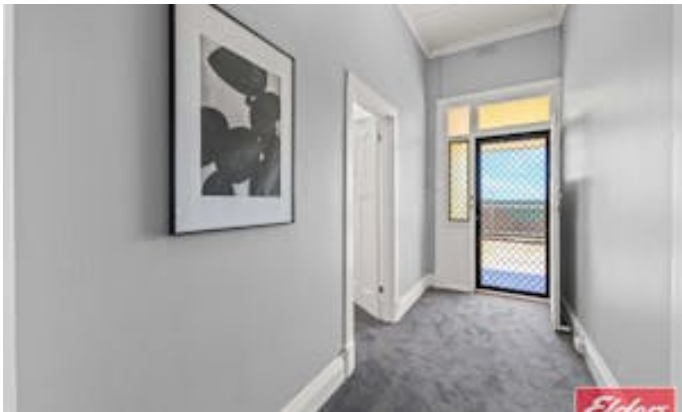
Christopher Hurst

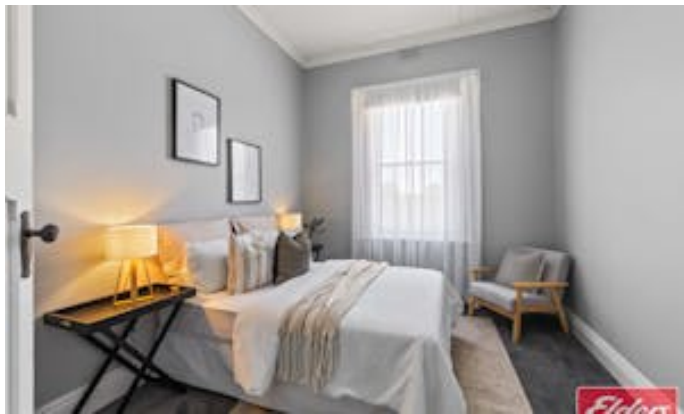
0412 897 020

Ready to make an offer? Head to eldersgawler.com.au, select the property, and click the 'Make an Offer' tab to submit your offer online in just a few steps.

All information contained herein is gathered from sources deemed to be reliable. However, we cannot guarantee its accuracy and interested persons should seek their own enquiries.

- Land Area 2,869.00 square metres
- Bedrooms: 3
- Bathrooms: 1
- Car Parks: 2
- Double garage

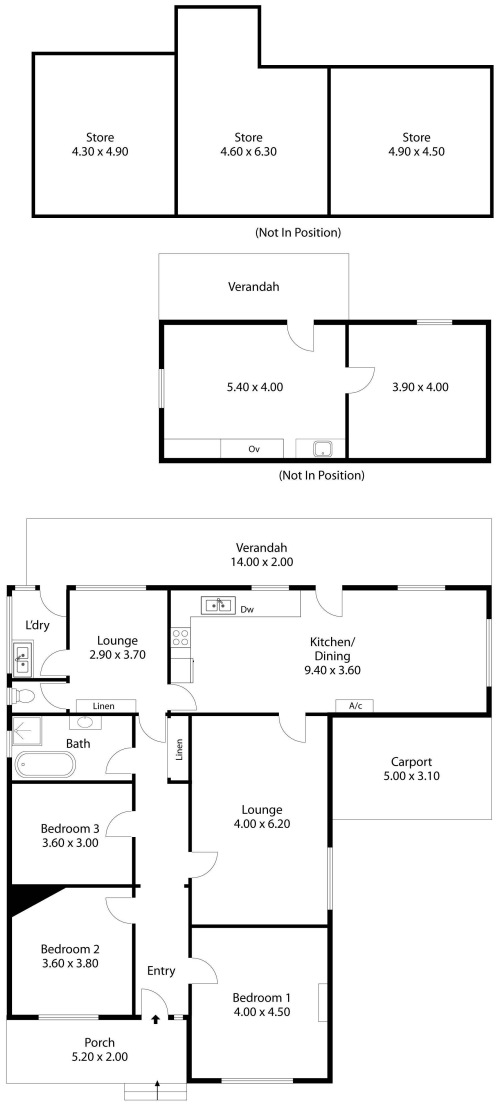








3322 Main North Road,
EVANSTON SOUTH



Living:	185.50SQ.M
Verandah:	39.00SQ.M
Carport:	15.98SQ.M
Porch:	10.00SQ.M
Store:	68.84SQ.M
TOTAL:	319.32SQ.M



This Drawing is for illustration purposes only. All measurements are internal and approximate. Details intended to be relied upon should be independently verified.

3322 Main North Road,
Evanston South



Please note: This drawing is for illustration purposes only. All measurements are approximate and details intended to be relied upon should be independently verified.