

## 14 Kavanagh Court, POORAKA, SA 5095

### Ready to Move Into

Perfectly positioned this beautifully presented home offers comfortable family living with space, security and convenience in a highly sought after Pooraka location.

Set on an easy care 420sqm allotment, the home features three well-sized bedrooms, including a master suite complete with walk in robe and convenient access to the two way bathroom. A spacious formal lounge and dining room provide the perfect place to relax or entertain, while the open plan kitchen and living area forms the heart of the home with plenty of natural light and functionality.

The well equipped kitchen offers ample bench space, extensive built in cupboards and generous storage throughout, catering perfectly to busy family living.

Step outside and enjoy the established gardens, side pergola and undercover outdoor entertaining area ideal for weekend gatherings or enjoying a quiet morning coffee. The property also includes a tool shed, secure double garage with valuable side access and additional outdoor space for practical living.

**TYPE:** For Sale

**INTERNET ID:** 80P4840

**SALE DETAILS**

**\$750,000 - \$795,000**

**CONTACT DETAILS**

**Elders Real Estate Gawler**

37 Murray Street

GAWLER, SA

08 8522 1988

RLA: 64256

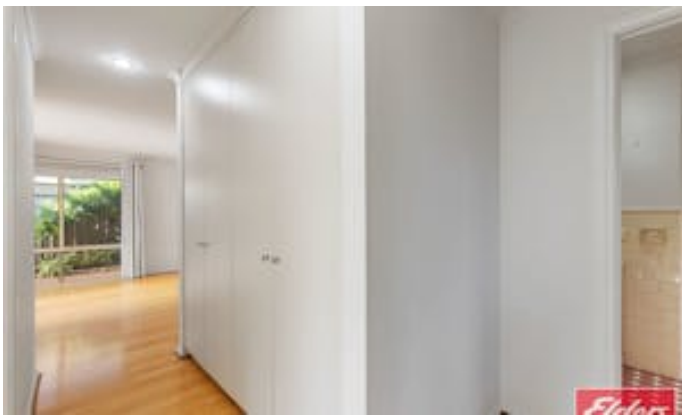
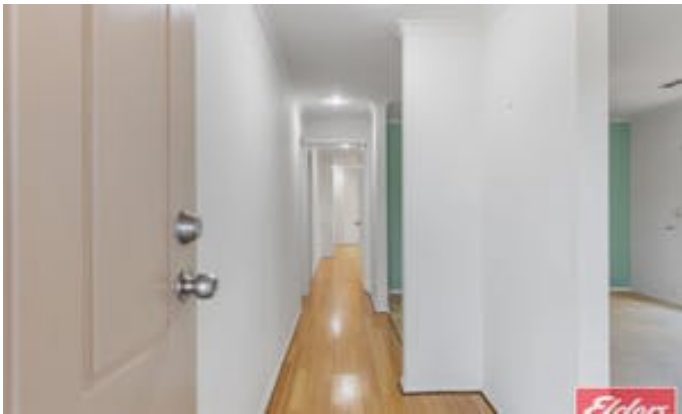
**Christopher Hurst**

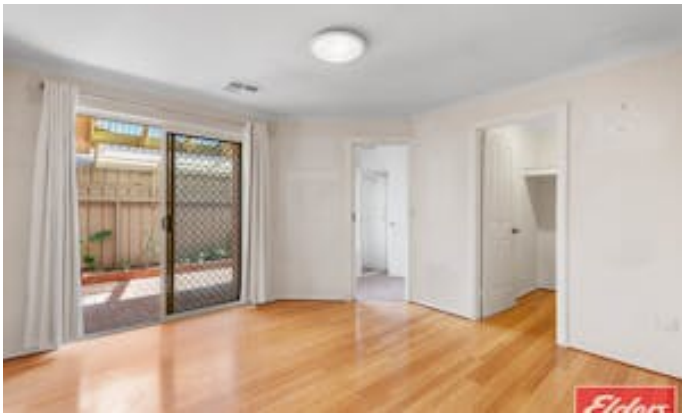
0412 897 020

Ready to make an offer? Head to [eldersgawler.com.au](http://eldersgawler.com.au), select the property, and click the 'Make an Offer' tab to submit your offer online in just a few steps.

All information contained herein is gathered from sources deemed to be reliable. However, we cannot guarantee its accuracy and interested persons should seek their own enquiries.

- Land Area 420.00 square metres
- Bedrooms: 3
- Bathrooms: 1
- Double garage

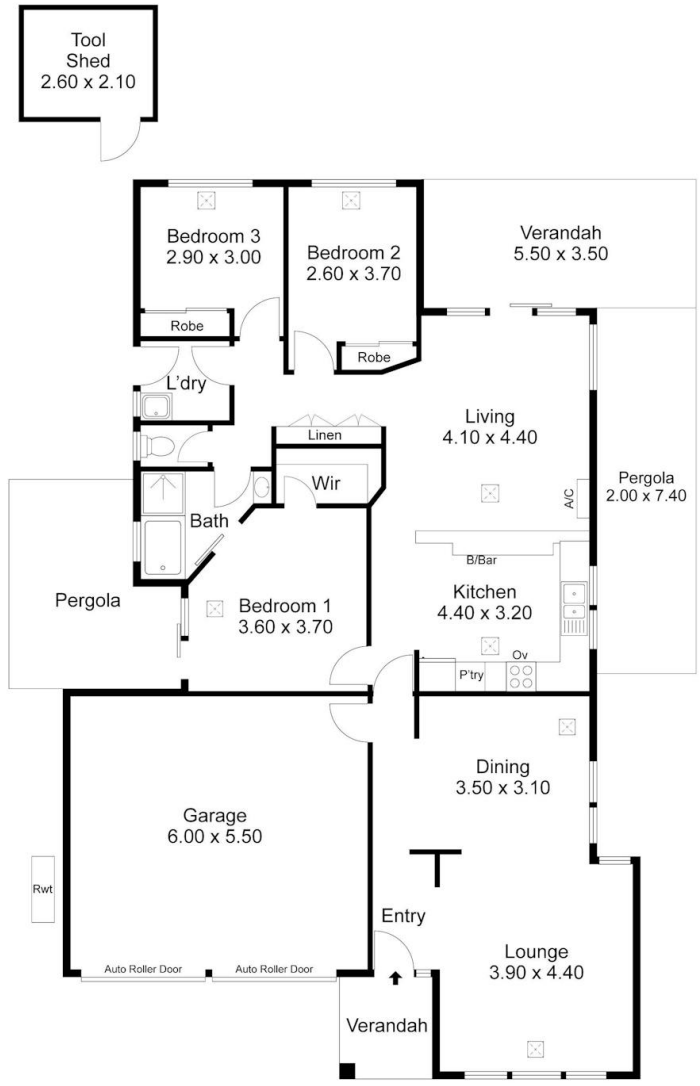








14 Kavanagh Court, POORAKA



Living:	122.60SQ.M
Verandah:	23.10SQ.M
Garage:	33.00SQ.M
Pergola:	29.60SQ.M
Shed:	5.40SQ.M
<b>TOTAL:</b>	<b>213.70SQ.M</b>



This Drawing is for illustration purposes only. All measurements are internal and approximate. Details intended to be relied upon should be independently verified.

PRODUCED BY  
**urban creative**