



11 Dansie Crescent, BRAHMA LODGE, SA 5109

Established Home with a Big Shed

Located close to schools, shops and more, this well-established home offers a fantastic combination of comfort and practicality.

The 3-bedroom home has been upgraded with a near-new kitchen featuring an island bench, along with an updated bathroom and polished timber floors flowing through the open plan living area. Additional features include reverse cycle ducted air conditioning, built-in cupboards, security cameras and more.

Outside you will find a large carport with access through to a big 6.5m x 9m shed with concrete floors and power. There is a full length rear verandah/outdoor entertaining area, toolshed, rainwater tanks and established gardens all on a 641sqm allotment.

Zoning - General Neighborhood

Council - Salisbury

Please note: If you would like to view this property please send through an enquiry and we will advise a time once confirmed.

The particulars contained herein are supplied for information only and shall not be taken as a representation in any respect on the part of the vendor or its agent. Interested parties should contact the nominated person or office for full and current details.

TYPE: For Sale

INTERNET ID: 80P4846

SALE DETAILS

\$750,000 - \$795,000

CONTACT DETAILS

Elders Real Estate Gawler

37 Murray Street

GAWLER, SA

08 8522 1988

RLA: 64256

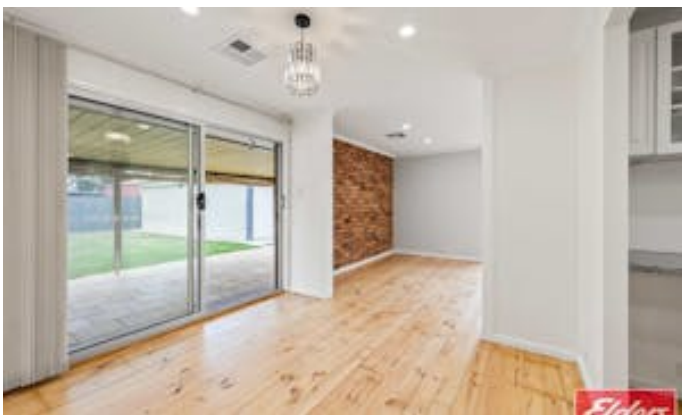
Christopher Hurst

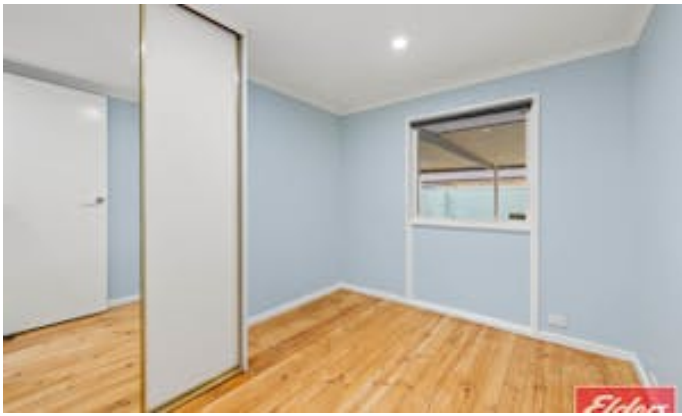
0412 897 020

Ready to make an offer? Head to eldersgawler.com.au, select the property, and click the 'Make an Offer' tab to submit your offer online in just a few steps.

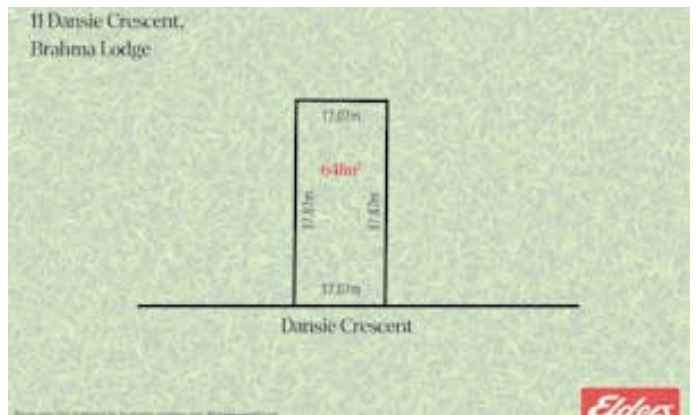
All information contained herein is gathered from sources deemed to be reliable. However, we cannot guarantee its accuracy and interested persons should seek their own enquiries.

- Land Area 641.00 square metres
- Bedrooms: 3
- Bathrooms: 1
- Single garage
- Single carport









11 Dansie Crescent
BRAHMA LODGE



Living: 108.00SQ.M
 Verandah: 37.40SQ.M
 Carport: 37.20SQ.M
 Shed: 65.40SQ.M

TOTAL: 248.00SQ.M



This Drawing is for illustration purposes only. All measurements are internal and approximate. Details intended to be relied upon should be independently verified.