

## 6 Grey Crescent, EVANSTON GARDENS, SA 5116

### Established & Affordable

Enjoying easy access to public transport, schools, the northern expressway and more this established home is neighbouring a park.

The 3 bedroom home has a formal lounge room, dining room, central kitchen, a large family room and ensuite to the main bedroom. The home also has ducted evaporative air conditioning, ducted gas heating and has been freshly painted with new floor coverings.

Outside you will find a rear verandah, carport, tool shed and side access to the back yard all on a 700sqm allotment.

With a little TLC this property represents an excellent opportunity to purchase a property in a very hard to find price range.

**PLEASE NOTE: THIS PROPERTY WILL NOT BE AVAILABLE FOR INSPECTION UNTIL SATURDAY 11TH OF JULY AT A TIME TO BE ADVISED. PLEASE SEND AN EMAIL TO REGISTER YOUR INTEREST AND WE WILL ADVISE THE TIME ONCE CONFIRMED.**

The particulars contained herein are supplied for information only and shall not be taken as a representation in any respect on the part of the vendor or its agent. Interested parties should contact the nominated person or office for full and current details.

**TYPE:** For Sale

**INTERNET ID:** 80P4856

### SALE DETAILS

**\$595,000 - \$635,000**

### CONTACT DETAILS

**Elders Real Estate Gawler**

37 Murray Street

GAWLER, SA

08 8522 1988

RLA: 64256

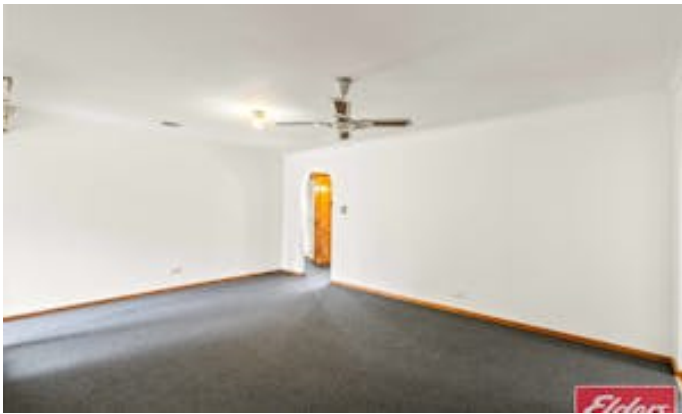
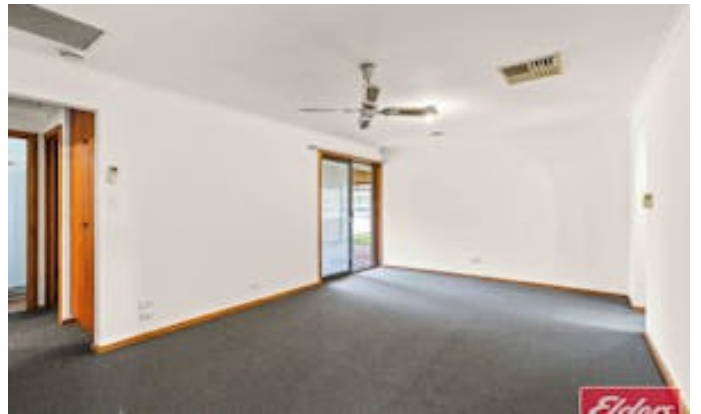
**Christopher Hurst**

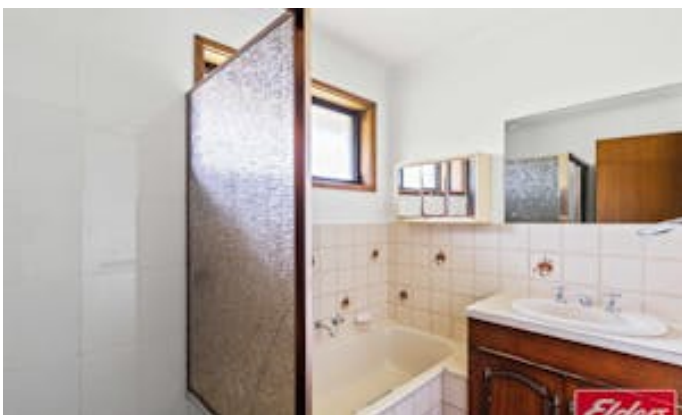
0412 897 020

Ready to make an offer? Head to [eldersgawler.com.au](http://eldersgawler.com.au), select the property, and click the 'Make an Offer' tab to submit your offer online in just a few steps.

All information contained herein is gathered from sources deemed to be reliable. However, we cannot guarantee its accuracy and interested persons should seek their own enquiries.

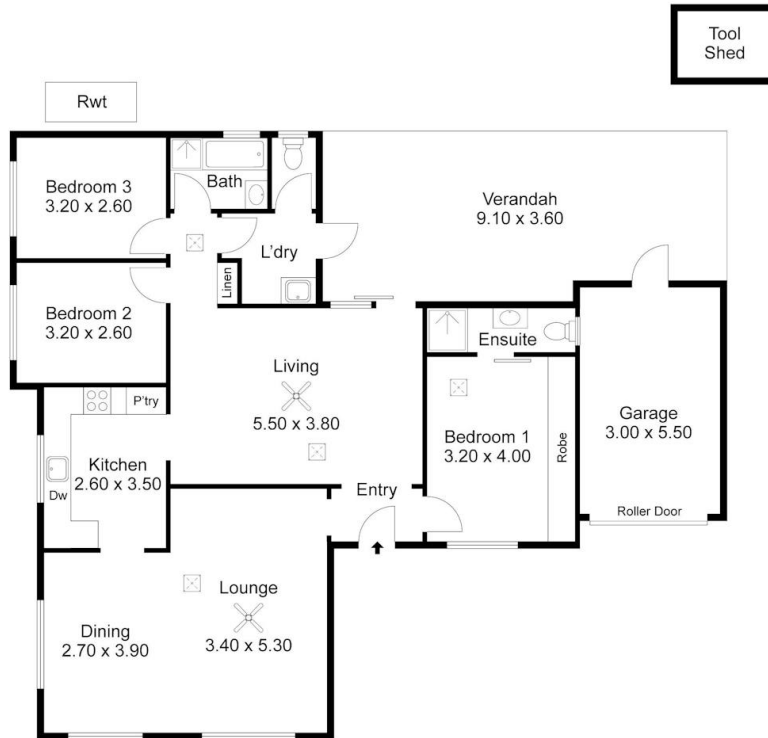
- Land Area 700.00 square metres
- Bedrooms: 3
- Bathrooms: 2
- Single carport







6 Grey Crescent, EVANSTON GARDENS



Living:	111.90SQ.M
Verandah:	31.70SQ.M
Garage:	17.05SQ.M
Shed:	3.60SQ.M
<b>TOTAL:</b>	<b>164.25SQ.M</b>

This Drawing is for illustration purposes only. All measurements are internal and approximate. Details intended to be relied upon should be independently verified.

