



## 14 Rau Avenue, EVANSTON, SA 5116

### 4 Bedroom Home - Handy Location

Located within easy walking distance to schools, shops, public transport and more this well established home has lots to offer.

The home has an ensuite and walk in robe to the main bedroom, a lounge room and central kitchen overlooking the meals and living area.

The home has lots of features including: reverse cycle ducted air conditioning, lots of built in cupboards, a solar system, security roller shutters and a tiled living area.

Outside there is a double carport (one under the main roof) with roller doors. There is a paved outdoor under cover entertaining area with zip track blinds, a 6m x 6m shed with access and fully established low maintenance gardens all on a 640sqm allotment.

Ready to make an offer? Head to [eldersgawler.com.au](http://eldersgawler.com.au), select the property, and click the 'Make an Offer' tab to submit your offer online in just a few steps.

All information contained herein is gathered from sources deemed to be reliable.

The particulars contained herein are supplied for information only and shall not be taken as a representation in any respect on the part of the vendor or its agent. Interested parties should contact the nominated person or office for full and current details.

**TYPE:** For Sale

**INTERNET ID:** 80P4865

**SALE DETAILS**

**\$730,000 - \$760,000**

**CONTACT DETAILS**

**Elders Real Estate Gawler**

37 Murray Street

GAWLER, SA

08 8522 1988

RLA: 64256

**Christopher Hurst**

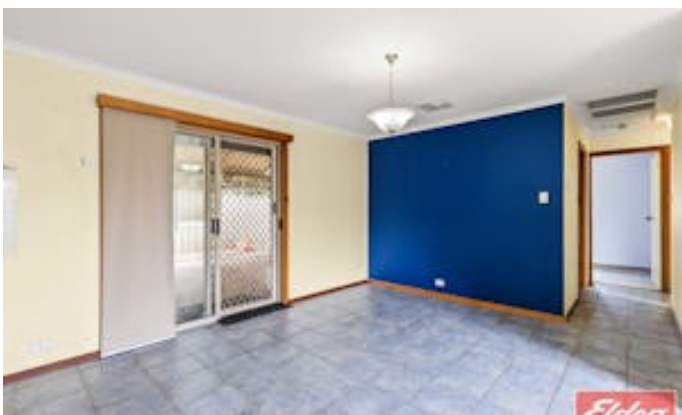
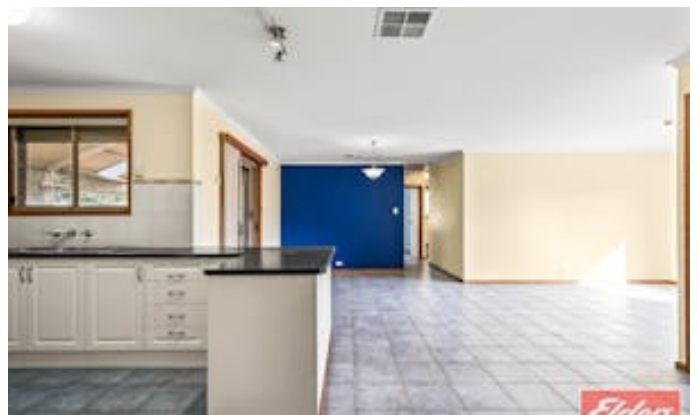
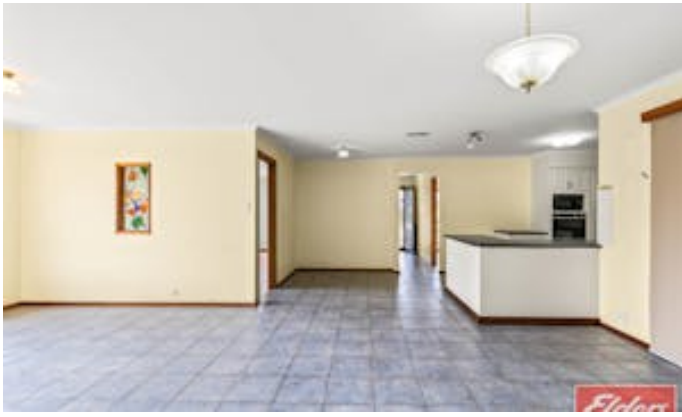
0412 897 020

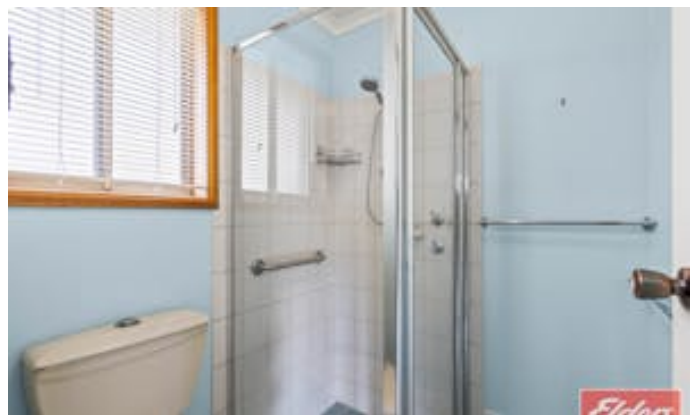
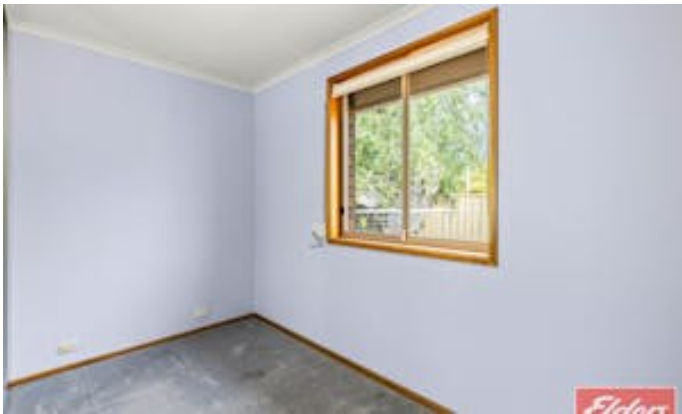
However, we cannot guarantee its accuracy and interested persons should seek their own enquiries.

Other features: Close to Schools, Close to Shops, Close to Transport

- Land Area 640.00 square metres
- Bedrooms: 4
- Bathrooms: 2
- Single garage
- Single carport









14 Rau Avenue, EVANSTON



Living:	143.20SQ.M
Verandah:	43.80SQ.M
Carport:	36.70SQ.M
Garage:	25.50SQ.M
<b>TOTAL:</b>	<b>249.20SQ.M</b>



This Drawing is for illustration purposes only. All measurements are internal and approximate. Details intended to be relied upon should be independently verified.

PRODUCED BY  
**urban creative**