



3 Berrett Road, GAWLER EAST, SA 5118

Outstanding Location with Views and Exciting Potential

Please note - The first open inspection for this property will be on Wednesday 29th April 2026 at 4.45pm - 5.15pm. There will be a second inspection on Saturday 2nd May - at a time to be advised.

Set in an outstanding location opposite a reserve and enjoying lovely countryside views, this spacious 4 bedroom home was built by the original owners in 1988 and offers a fantastic opportunity for buyers looking to add their own touches and upgrade it to its former glory.

Inside, the home offers plenty of space for the family with a formal lounge featuring a striking cathedral ceiling and a brick open fireplace, a central kitchen, and an open plan meals and living area, along with a handy study nook and lots of built-in cupboards throughout the home.

The main bedroom includes an ensuite and walk-in robe, while the home is comforted by ducted evaporative air conditioning and a split system air conditioner.

Outside, there is a carport under the main roof plus a second carport with roller doors,

The particulars contained herein are supplied for information only and shall not be taken as a representation in any respect on the part of the vendor or its agent. Interested parties should contact the nominated person or office for full and current details.

TYPE: For Sale

INTERNET ID: 80P4889

SALE DETAILS

\$669,000 - \$699,000

CONTACT DETAILS

Elders Real Estate Gawler

37 Murray Street

GAWLER, SA

08 8522 1988

RLA: 64256

Elysa Hunter

0426 622 100

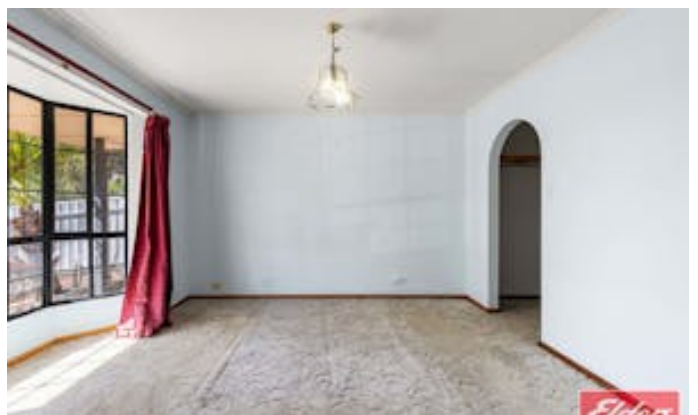
outdoor entertaining area, toolshed all on a generous 709sqm allotment.

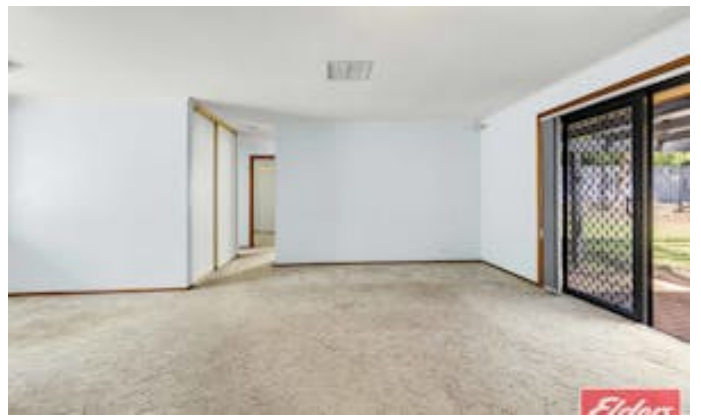
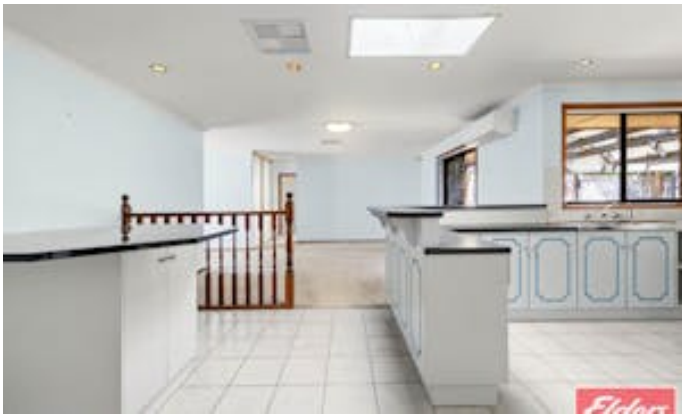
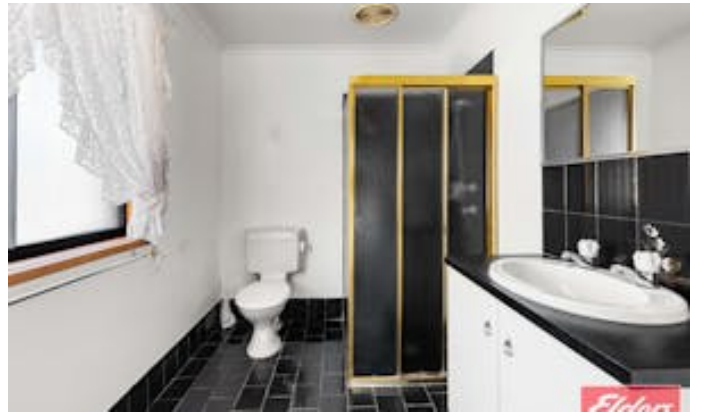
With an exceptional position and plenty of potential, this is a great opportunity for buyers wanting to secure a well-located home.

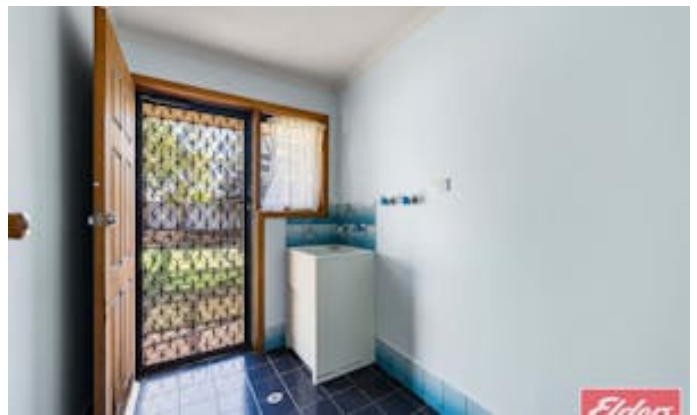
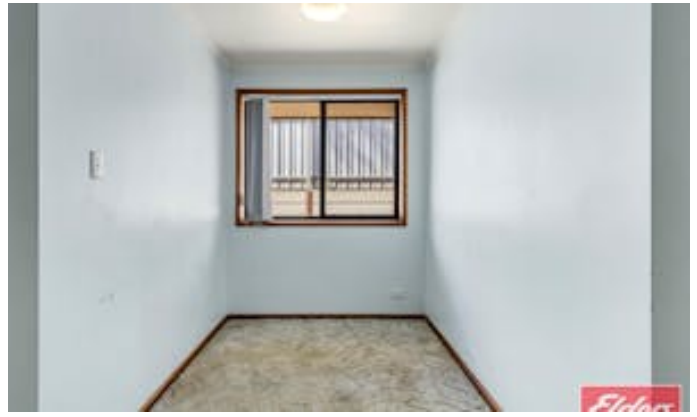
Ready to make an offer? Head to eldersgawler.com.au, select the property, and click the 'Make an Offer' tab to submit your offer online in just a few steps.

All information contained herein is gathered from sources deemed to be reliable. However, we cannot guarantee its accuracy and interested persons should seek their own enquiries.

- Land Area 709.00 square metres
- Bedrooms: 4
- Bathrooms: 2
- Single garage
- Single carport

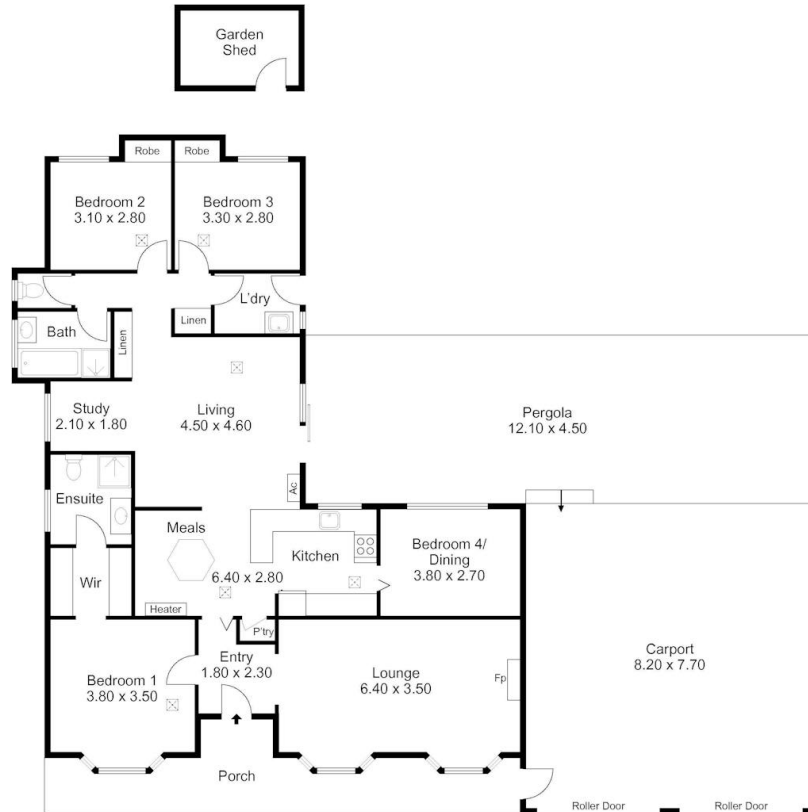








3 Berrett Road, GAWLER EAST



Living:	148.80SQ.M
Carport:	63.10SQ.M
Pergola:	55.80SQ.M
Shed:	7.20SQ.M
Porch:	19.20SQ.M
TOTAL:	294.10SQ.M



This Drawing is for illustration purposes only. All measurements are internal and approximate. Details intended to be relied upon should be independently verified.

PRODUCED BY
urban creative