



17 Barossa Avenue, GAWLER EAST, SA 5118

Immaculate and Renovated

Please note - The first open inspection for this property will be on Wednesday 29th April 2026 at 5.30pm - 6.00pm. There will be a second inspection on Saturday 2nd May - at a time to be advised.

This property is an absolute credit to its current owners. The presentation is first class and the renovation is fantastic.

The solid brick 1958 built home has big rooms, high ceilings with 4 bedrooms or 3 with a study. There is a large living room, lovely kitchen, dining room, rear sunroom/sitting room and renovated laundry.

The home boasts many features including: ducted gas heating, ducted evaporative air conditioning, a reverse cycle wall unit, freshly painted, feature timber floors, a 3.5kw solar system, solar hot water service and more.

Outside you will find front and rear verandahs, an outdoor entertaining area with blinds, fully established easy care gardens, fruit trees and the huge plus of being on a corner block having access to a huge 6m x 9m shed. Perfect for the cars, caravan or boat all

The particulars contained herein are supplied for information only and shall not be taken as a representation in any respect on the part of the vendor or its agent. Interested parties should contact the nominated person or office for full and current details.

TYPE: For Sale

INTERNET ID: 80P4911

SALE DETAILS

\$670,000 - \$720,000

CONTACT DETAILS

Elders Real Estate Gawler

37 Murray Street

GAWLER, SA

08 8522 1988

RLA: 64256

Christopher Hurst

0412 897 020

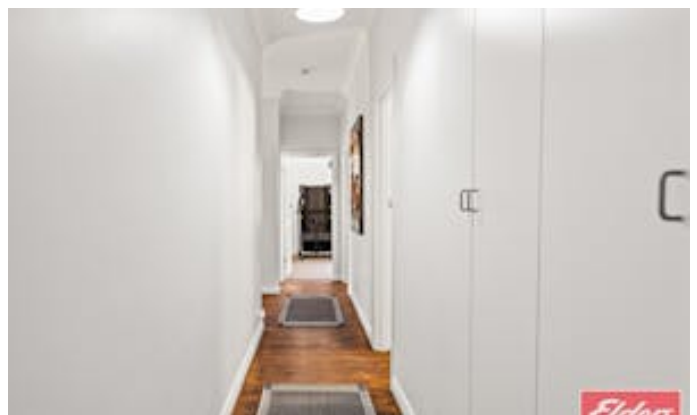
on a 720sqm allotment in a very popular location.

Ready to make an offer? Head to eldersgawler.com.au, select the property, and click the 'Make an Offer' tab to submit your offer online in just a few steps.

All information contained herein is gathered from sources deemed to be reliable. However, we cannot guarantee its accuracy and interested persons should seek their own enquiries.

- Land Area 720.00 square metres
- Bedrooms: 4
- Bathrooms: 1
- Double garage

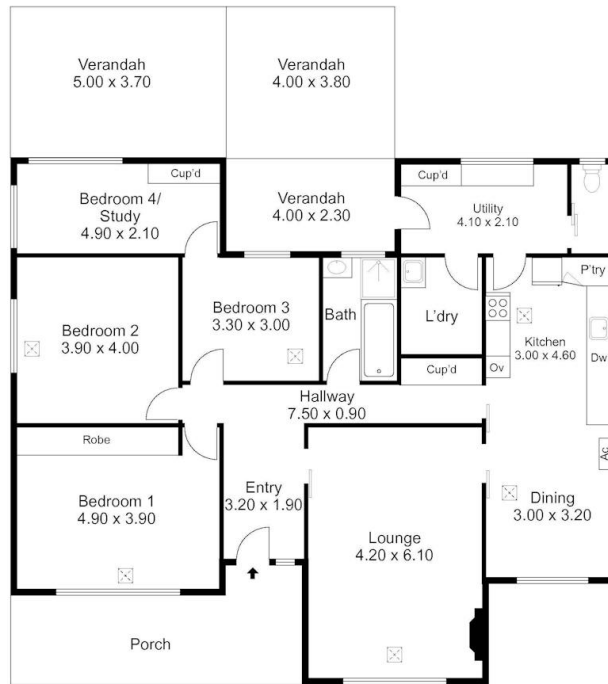
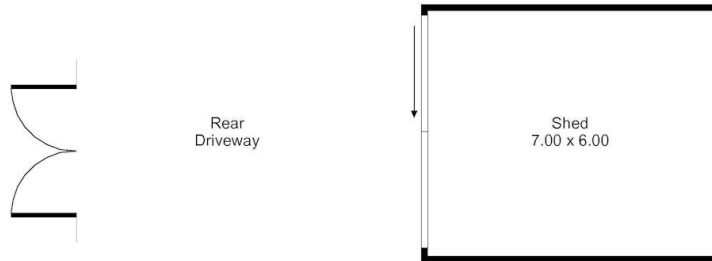








17 Barossa Avenue, GAWLER EAST



Living:	148.20SQ.M
Verandah:	42.00SQ.M
Porch:	17.70SQ.M
Shed:	42.00SQ.M
TOTAL:	249.90SQ.M



This Drawing is for illustration purposes only. All measurements are internal and approximate. Details intended to be relied upon should be independently verified.

PRODUCED BY
urban creative