



10 Walter Randall Glen, PEWSEY VALE, SA 5351

Paradise Found - Idyllic Country Setting

This modern 4 or 5 bedroom steel frame brick veneer home is set on a 3.16Acre (1.28Ha) allotment with dam providing an enchanting natural setting with neighbours at a distance in this stunning part of the Southern Barossa.

The setting offers established trees and a semi bushland setting with plenty of birdlife, native flora and fauna and for those seeking an alternative lifestyle there is an orchard, vegetable garden and a large chook run.

The home features 4 good size bedrooms with ensuite and walk in robe to the master with the potential of a fifth bedroom or second living area. The kitchen which is the hub of the home features plenty of bench space, gas cooktop and pantry overlooking the dining room, lounge and the picturesque gardens.

There is also a main bathroom and laundry with built ins and year round comfort is provided by ducted evaporative cooling, a split system air conditioner and a combustion heater.

Outdoors there is a two car carport, a peaked verandah/outdoor entertaining area

The particulars contained herein are supplied for information only and shall not be taken as a representation in any respect on the part of the vendor or its agent. Interested parties should contact the nominated person or office for full and current details.

TYPE: For Sale

INTERNET ID: 80P4923

SALE DETAILS

**\$1,149,000 -
\$1,199,000**

CONTACT DETAILS

Elders Real Estate Gawler
37 Murray Street
GAWLER, SA
08 8522 1988
RLA: 64256

Jeff Lind
0413 186 214

perfect for outdoor living or when friends or family are over, a big 14.5m x 6m shed with concrete floor and power and 5 large rainwater tanks.

Rarely do such idyllic and functional properties come to the market with this property being perfect for those who want room to move and to be amongst nature.

To secure your own piece of paradise and escape the rat race contact Jeff Lind on 0413 186 214.

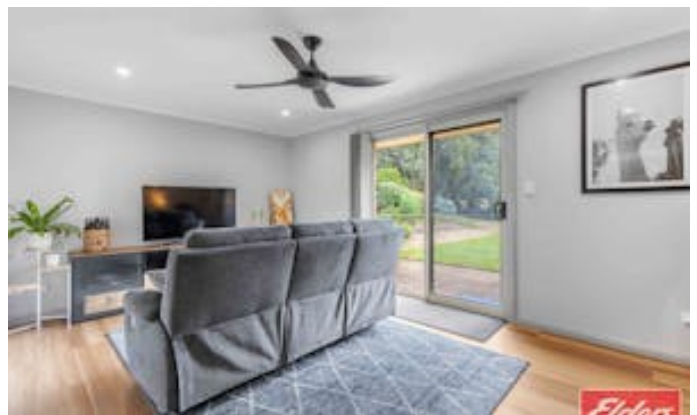
Please note: This property will not be open for inspection prior to its first inspection on Saturday 30th of May at a time to be advised.

Ready to make an offer? Head to eldersgawler.com.au, select the property, and click the 'Make an Offer' tab to submit your offer online in just a few steps.

All information contained herein is gathered from sources deemed to be reliable. However, we cannot guarantee its accuracy and interested persons should seek their own enquiries.

- Land Area 1.28 hectares
- Bedrooms: 5
- Bathrooms: 2
- Double carport









10 Walter Randall Glen, PEWSEY VALE



Living:	166.70SQ.M
Carpport:	36.00SQ.M
Garage:	85.80SQ.M
Shed:	6.90SQ.M
Chook:	8.10SQ.M
Pergola:	39.60SQ.M
TOTAL:	343.10SQ.M

This Drawing is for illustration purposes only. All measurements are internal and approximate. Details intended to be relied upon should be independently verified.



PRODUCED BY
urban creative