



14 Edward Crescent, EVANSTON PARK, SA 5116

Neat and Tidy 3 Bedroom Home

Located close to schools and shops this neat and tidy 3 bedroom home has a separate lounge room with new carpet, a spacious central kitchen and a meals area that overlooks a great size family room.

There is a 3 way bathroom and a walk through robe to the main bedroom, lots of built in cupboards, a slow combustion heater, 2x new split system air conditioning, a 15 panel solar system and much more!

Outside you will find an outdoor entertaining area, 3 toolsheds, rainwater tanks and rear verandah overlooking established gardens with fruit trees all on a great size block.

INSPECTION IS EASY - If you are on our website www.eldersgawler.com.au or realestate.com.au press the **REQUEST AN INSPECTION** button to register your interest. Once registered, we can keep you updated once an inspection time is available and about any changes or cancellations.

APPLICATION - Please head to our website www.eldersgawler.com.au and click

The particulars contained herein are supplied for information only and shall not be taken as a representation in any respect on the part of the vendor or its agent. Interested parties should contact the nominated person or office for full and current details.

TYPE: For Rent

INTERNET ID: 80P4927

RENTAL DETAILS

Rent / Lease:

\$540 pw

CONTACT DETAILS

Elders Real Estate Gawler

37 Murray Street

GAWLER, SA

08 8522 1988

RLA: 64256

Jordan Dare

0433 982 887

RENT, then click the particular property and the APPLY NOW button - from there please follow the prompts.

DISCLAIMER

All information contained herein is gathered from sources deemed to be reliable. However, we cannot guarantee its accuracy and interested persons should seek their own enquiries.

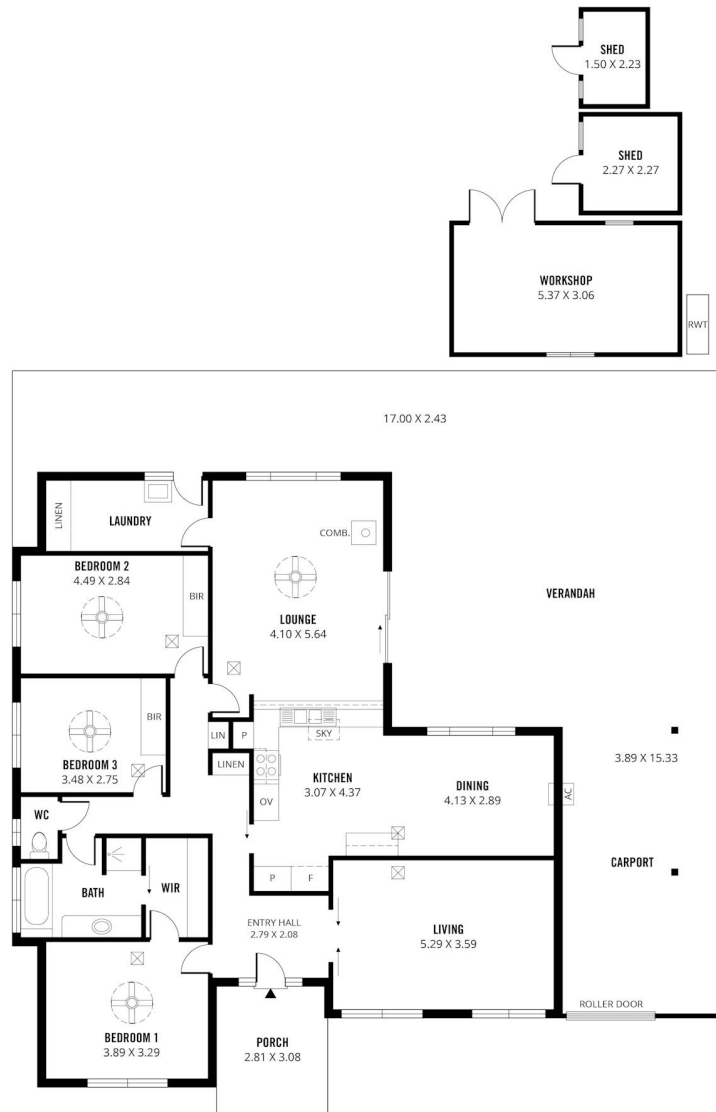
Other features: Close to Shops, Heating

- This property is: Unfurnished
- Pets: No
- Available on: 18/05/26
- Land Area 718.00 square metres
- Bedrooms: 3
- Bathrooms: 1
- Single carport









Scale in metres. This drawing is for illustration purposes only. All measurements are approximate and details intended to be relied upon should be independently verified. Produced by The Fotobase Group