



68 Federation Way, ANDREWS FARM, SA 5114

Affordable Opportunity

Set on a generous 570sqm allotment, this 3 bedroom, 1 bathroom home presents a great opportunity for first home buyers, investors, or those looking to add their own touch.

Offering a functional layout with a lounge room, upgraded kitchen meals area, split system air conditioning, and single carport with access through to the back yard, the home provides a great foundation with plenty of scope to update or personalise.

Conveniently located close to schools, shops, public transport, and everyday amenities, as well as enjoying easy access to the norther expressway, this is an opportunity not to be missed.

Ready to make an offer? Head to eldersgawler.com.au, select the property, and click the 'Make an Offer' tab to submit your offer online in just a few steps.

All information contained herein is gathered from sources deemed to be reliable. However, we cannot guarantee its accuracy and interested persons should seek their

The particulars contained herein are supplied for information only and shall not be taken as a representation in any respect on the part of the vendor or its agent. Interested parties should contact the nominated person or office for full and current details.

TYPE: For Sale

INTERNET ID: 80P4936

SALE DETAILS

\$569,000 - \$599,000

CONTACT DETAILS

Elders Real Estate Gawler

37 Murray Street

GAWLER, SA

08 8522 1988

RLA: 64256

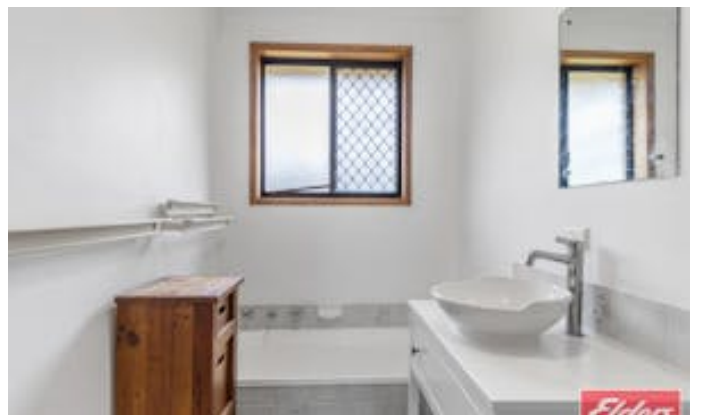
Elysa Hunter

0426 622 100

own enquiries.

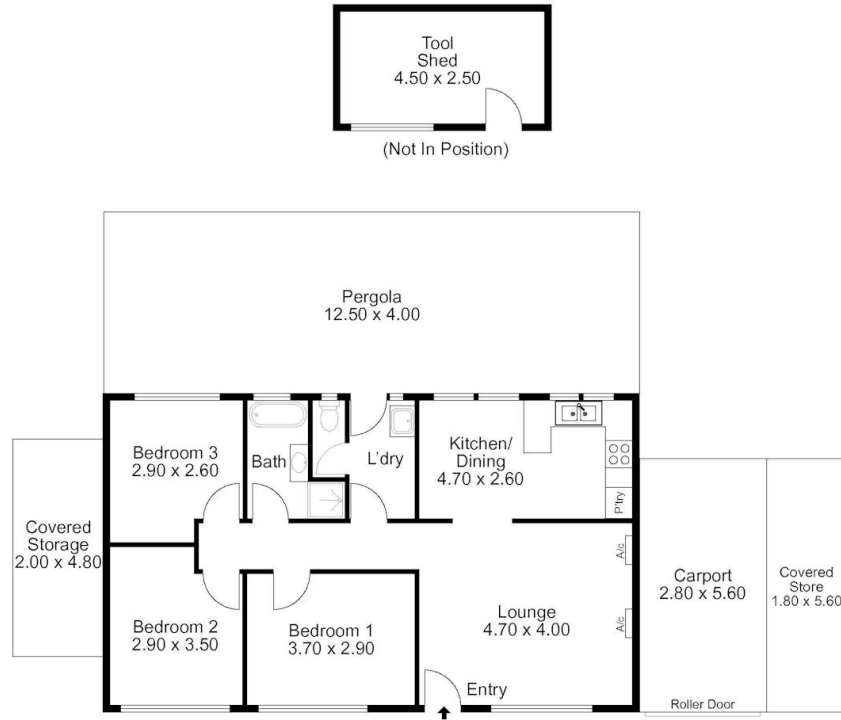
- Land Area 570.00 square metres
- Bedrooms: 3
- Bathrooms: 1
- Single carport







68 Federation Way, **ANDREWS FARM**



Living:	77.60SQ.M
Verandah:	50.00SQ.M
Carport:	15.60SQ.M
Shed:	11.20SQ.M
Storage:	19.70SQ.M
TOTAL:	174.10SQ.M



This Drawing is for illustration purposes only. All measurements are internal and approximate. Details intended to be relied upon should be independently verified.

PRODUCED BY
urban creative