



1/230 Angaston Road, NURIOOTPA, SA 5355

Open-plan office with High Profile

- 173sqm* office building
- Centrally located between the townships of Nuriootpa and Angaston
- 6 car parks on site
- 3 separate offices plus large open reception and work area
- Air conditioned and ready to move into

For further information please contact Jackson Dare 0423 771 611.

* approximately

All information contained herein is gathered from sources deemed to be reliable. However, we cannot guarantee its accuracy and interested persons should seek their own enquiries.

TYPE: For Lease

INTERNET ID: 80P4939

RENTAL DETAILS

Rent / Lease:

\$1800 exc GST pm

CONTACT DETAILS

Elders Real Estate Gawler

37 Murray Street

GAWLER, SA

08 8522 1988

RLA: 64256

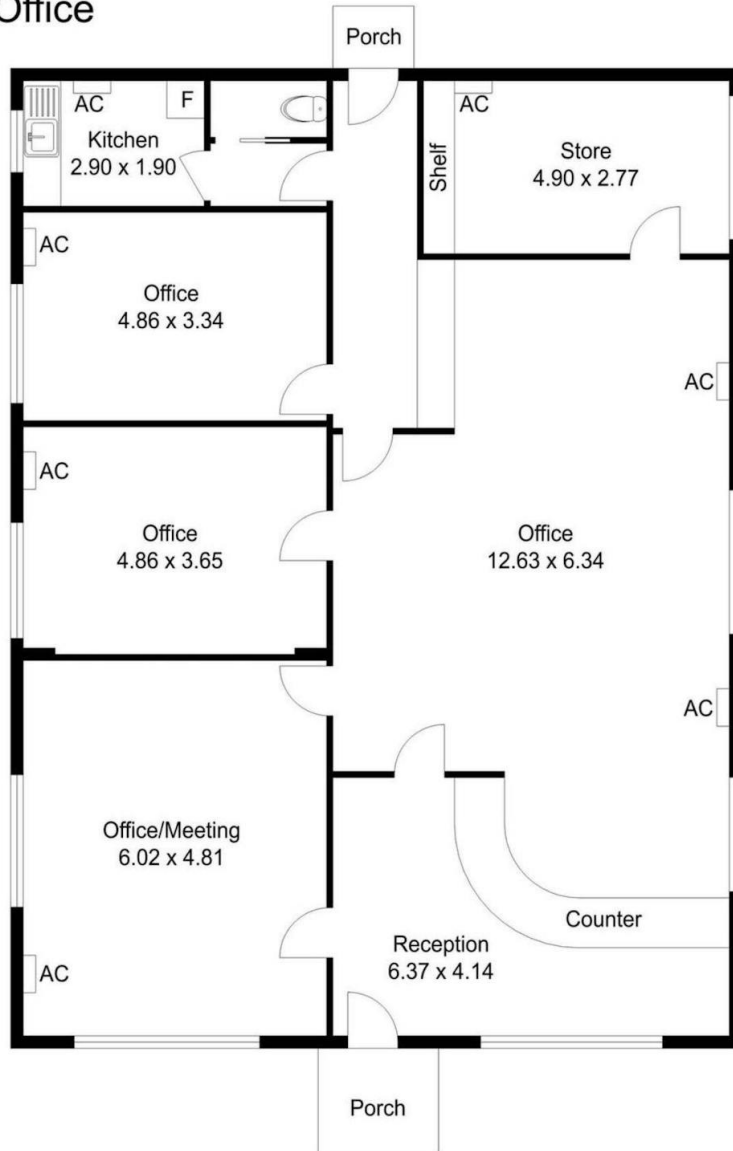
Jackson Dare

0423 771 611

- Land Area 600.00 square metres
- Commercial Type:
- Building Area: 173.00 square metres



Main Office



Internal: 173 m²
 External: 5 m²
 Total: 178 m²

230 Angaston Road, Nuriootpa

Disclaimer: All measurements are approximate and are provided for illustrative purposes only. While every effort has been made to ensure accuracy, actual dimensions may vary. Interested parties should conduct their own enquiries.