



## Lot 32 Altona Road, LYNDOCH, SA 5351

Holy Trinity Rectory, Circa 1917 Stone Home on 18 Acres (7.3 HA)

This enchanting stone home is built with sandstone and bluestone and offers return verandahs, high ceilings, large rooms, a cellar and fireplaces to some rooms all set on a unique gum studded 18 acres in the popular Barossa area of Lyndoch.

The rectory features an entry hall and can be utilised as 4 bedroom or 3 bedrooms plus a lounge and a family room/work from home office. There is a lounge with some lovely leadlight and a fireplace, country kitchen with cellar below, a store room, laundry and bathroom.

There is also a 9m x 6m shed with concrete floor and power being ideal for car storage or as a workshop.

The land is zoned Rural and is semi cleared with interspersed established trees offering a beautiful rural backdrop and is perfect for those with horses or other livestock. Enquires can be made to the Barossa council for other potential uses.

Rarely do properties of this character and land size come to the market in this area.

The particulars contained herein are supplied for information only and shall not be taken as a representation in any respect on the part of the vendor or its agent. Interested parties should contact the nominated person or office for full and current details.

**TYPE:** For Sale

**INTERNET ID:** 80P4956

**SALE DETAILS**

**EXPRESSIONS OF INTEREST**

**CONTACT DETAILS**

**Elders Real Estate Gawler**  
37 Murray Street  
GAWLER, SA  
08 8522 1988  
RLA: 64256

**Jeff Lind**  
0413 186 214

The property is being sold by Expression of Interest with offers closing 17th June 2026 at 12.00 pm.

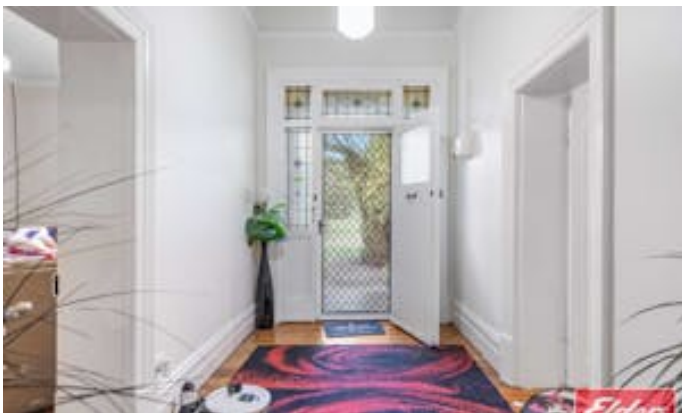
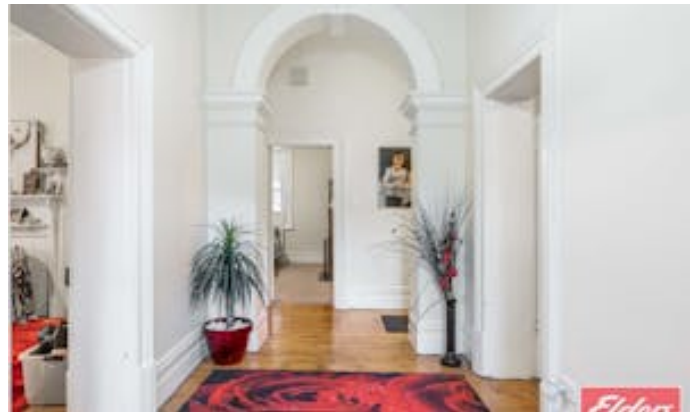
For details or to inspect the property contact Jeff Lind on 0413186214

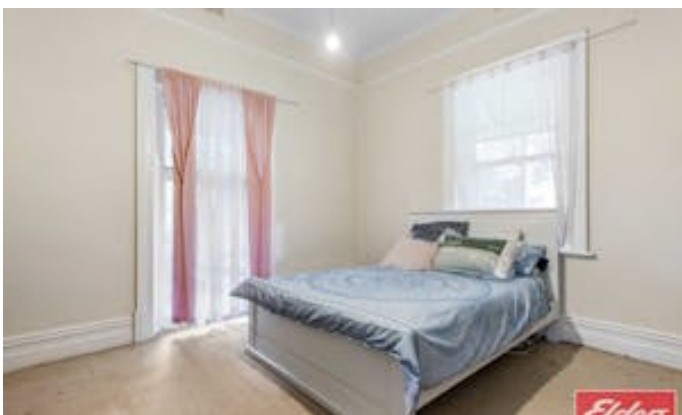
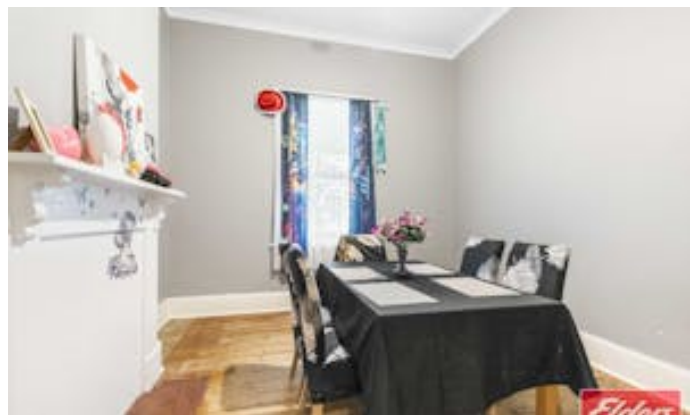
Please note: This property will not be open for inspection prior to its first open on Saturday 6th of June at a time to be advised.

Ready to make an offer? Head to [eldersgawler.com.au](http://eldersgawler.com.au), select the property, and click the 'Make an Offer' tab to submit your offer online in just a few steps.

All information contained herein is gathered from sources deemed to be reliable. However, we cannot guarantee its accuracy and interested persons should seek their own enquiries.

- Land Area 18 acres
- Bedrooms: 4
- Bathrooms: 1
- Double garage

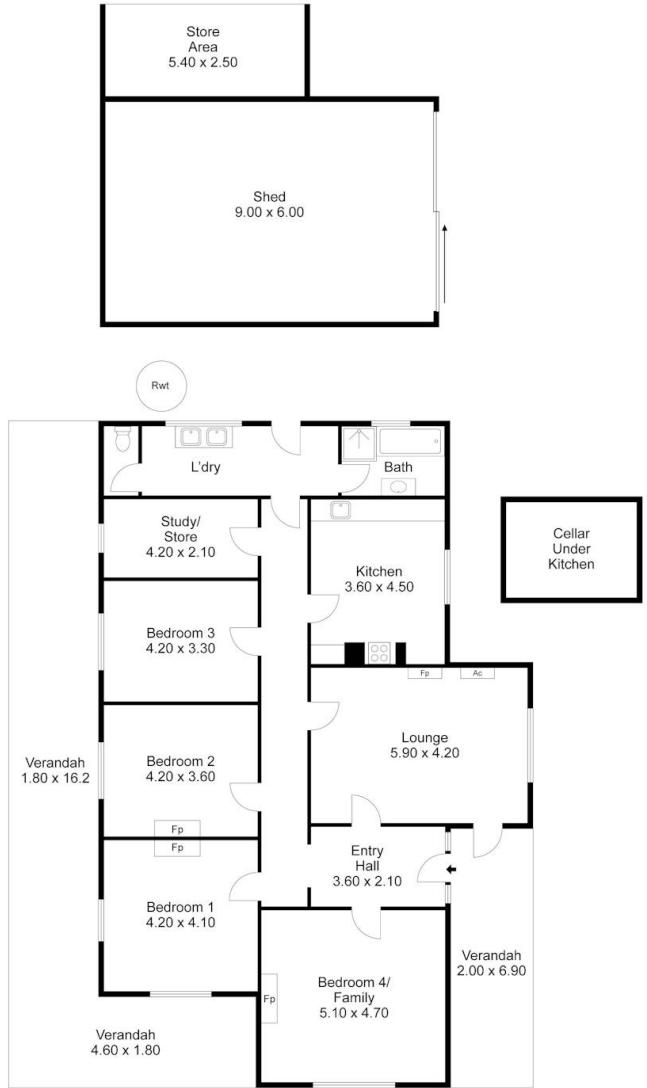








3 Altona Road, LYNDOCH



Living:	170.20SQ.M
Store:	13.50SQ.M
Verandah:	70.30SQ.M
Shed:	54.00SQ.M
<b>TOTAL:</b>	<b>308.00SQ.M</b>

This Drawing is for illustration purposes only. All measurements are internal and approximate. Details intended to be relied upon should be independently verified.



PRODUCED BY  
**urban creative**