

28 McKinlay Square, HEWETT, SA 5118

Stunning 4 Bedroom Home in Hewett

Beautifully positioned overlooking the McKinlay Square reserve in the ever popular area of Hewett and enjoying a short walk to parks, walking tracks and Gawler's Town Centre - Elders Gawler is happy to present this stunning 4 bedroom home.

Full of style and class with a huge master bedroom and ensuite with spa. There is a formal living room and dining room, kitchen complete with stone bench tops overlooking a spacious open plan living and meals area that steps out into the impressive outdoor entertaining area.

The home is full of features including: ducted evaporative air conditioning, ducted gas heating, 3 split system air conditioners, lots of built in storage and high ceilings with quality fixtures and features throughout.

The outdoor entertaining area is superb. It is semi enclosed, expansive with zip track blinds and access from the double garage making it a wonderful area to entertain.

The gardens are fully established but still low maintenance, offering the best of both worlds.

TYPE: For Rent

INTERNET ID: 80P4964

RENTAL DETAILS

Rent / Lease:

\$750 pw

CONTACT DETAILS

Elders Real Estate Gawler

37 Murray Street

GAWLER, SA

08 8522 1988

RLA: 64256

Jordan Dare

0433 982 887

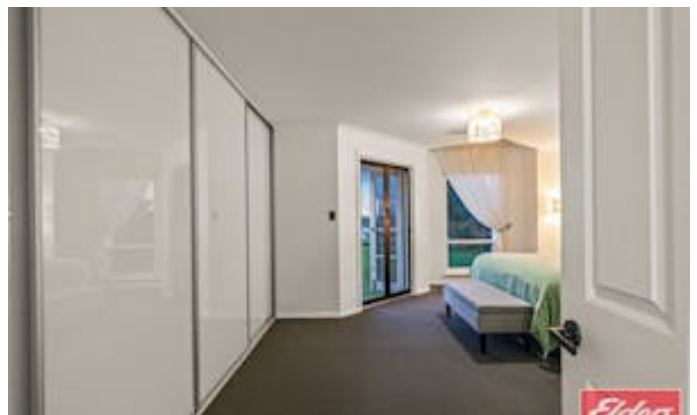
INSPECTION IS EASY - If you are on our website www.eldersgawler.com.au or realestate.com.au press the REQUEST AN INSPECTION button to register your interest. Once registered, we can keep you updated once an inspection time is available and about any changes or cancellations.

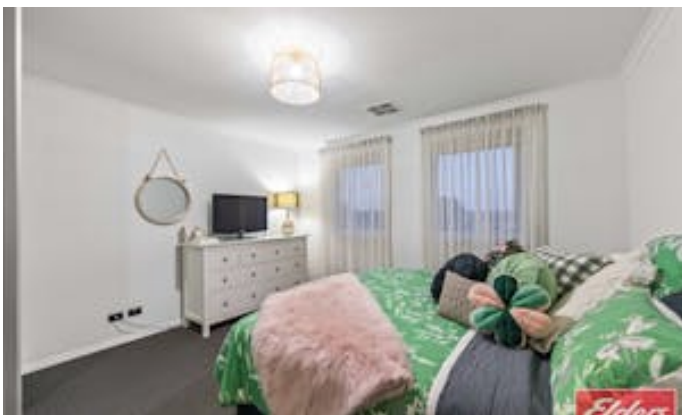
APPLICATION - Please head to our website www.eldersgawler.com.au and click RENT, then click the particular property and the APPLY NOW button - from there please follow the prompts.

All information contained herein is gathered from sources deemed to be reliable. However, we cannot guarantee its accuracy and interested persons should seek their own enquiries.

- This property is: Unfurnished
- Pets: No
- Available on: 26/06/26
- Land Area 529.00 square metres
- Bedrooms: 4
- Bathrooms: 2
- Double garage
- Double carport









28 Mckinlay Square,
HEWETT



Living:	228.34SQ.M
Verandah:	141.225SQ.M
Garage:	42.585SQ.M
Porch:	4.305SQ.M
Balcony:	4.305SQ.M
Shed:	5.105SQ.M

TOTAL: 425.845SQ.M



This Drawing is for illustration purposes only. All measurements are internal and approximate. Details intended to be relied upon should be independently verified.