



1769 The Esplanade, MIDDLE BEACH, SA 5501

Great Location on The Esplanade

Jordan Dare from Elders Real Estate Gawler is happy to present this neat and tidy home on The Esplanade, Middle Beach - affordable and ready to move in - or invest with a great rental return!

This beachfront residence offers a rare opportunity in a tightly held neighbourhood of around 80-90 residents.

Located only 45 minutes from the city via the North-South Motorway and just 9 minutes from the popular suburb of Two Wells, enjoy the best of both worlds with the serenity of coastal living and the convenience of nearby amenities.

Property Features:

- Main bedroom with walk in robe
- Open plan kitchen and living area
- Reverse cycle split system for heating and cooling
- Separate laundry with cupboard space

The particulars contained herein are supplied for information only and shall not be taken as a representation in any respect on the part of the vendor or its agent. Interested parties should contact the nominated person or office for full and current details.

TYPE: For Sale

INTERNET ID: 80P4966

SALE DETAILS

\$379,000 - \$409,000

CONTACT DETAILS

Elders Real Estate Gawler

37 Murray Street

GAWLER, SA

08 8522 1988

RLA: 64256

Jordan Dare

0433 982 887

- Large deck area overlooking beachside
- Freshly painted
- Shed to rear yard
- Neat and tidy gardens to enjoy
- Ample parking space
- Solar system
- Bituminised road to expressway
- Boat ramp just minutes away
- Rental return \$370 - \$390pw

Secure this property now and enjoy the lifestyle plus long-term potential of a growing area.

An ideal opportunity for first home buyers, downsizers, or holidaymakers seeking a coastal retreat.

Council - Adelaide Plains

Description - Residential

Block size - 760sqm (approx)

Easements - Nil

Sewer - Septic

Mains water - No

Please contact Jordan Dare for all enquiries.

0433 982 887

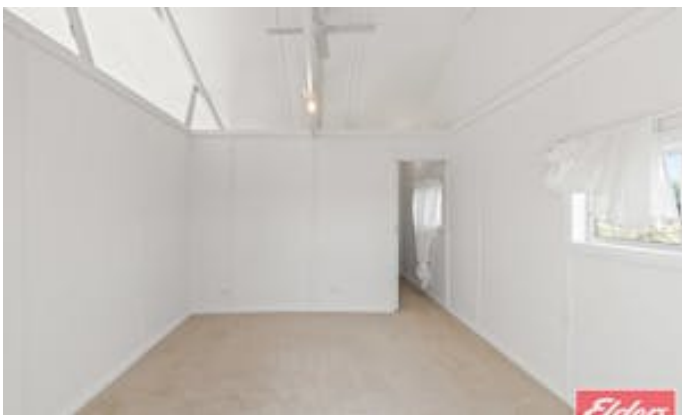
jwdare@eldersre.com.au

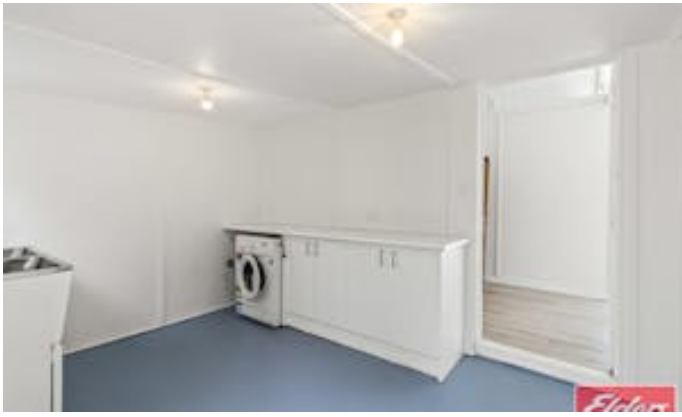
Ready to make an offer? Head to eldersgawler.com.au, select the property, and click the 'Make an Offer' tab to submit your offer online in just a few steps.

All information contained herein is gathered from sources deemed to be reliable. However, we cannot guarantee its accuracy and interested persons should seek their own enquiries.

- Land Area 760.00 square metres
- Bedrooms: 1
- Bathrooms: 1
- Car Parks: 4

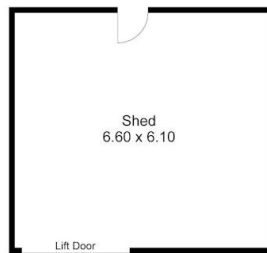








1769 The Esplanade, MIDDLE BEACH



Living:	78.70SQ.M
Verandah:	5.20SQ.M
Deck:	48.30SQ.M
Shed:	40.20SQ.M
TOTAL:	172.40SQ.M

This Drawing is for illustration purposes only. All measurements are internal and approximate. Details intended to be relied upon should be independently verified.



PRODUCED BY
urban creative